



Pelling Street, E14

£750,000

A beautifully presented and exceptionally spacious five-bedroom split-level apartment, recently refurbished throughout to an outstanding standard and offering over 1450 sq ft of versatile living accommodation.

Arranged over two floors, this impressive home features five well-proportioned bedrooms, two contemporary bathrooms, and a bright open-plan living and dining area designed for modern family living. Benefiting from a desirable south-facing aspect, the property has an abundance of natural sunlight throughout the day, creating a bright and welcoming atmosphere.

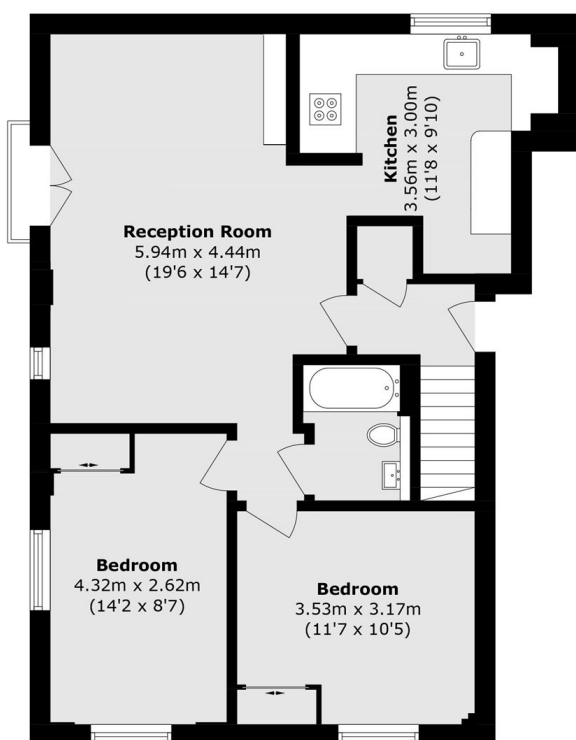
The property has been completely refurbished throughout, with high-quality finishes, modern fixtures and fittings, and a stylish contemporary design. Further benefits include a private outdoor patio, ideal for entertaining or relaxing, and an allocated parking space for added convenience.

Westferry DLR Station is approximately 0.3 miles from the property, providing swift access to Canary Wharf, Bank and Stratford. Canary Wharf Station (Jubilee Line and Elizabeth Line) is approximately 0.7 miles away, offering fast connections across London and beyond.

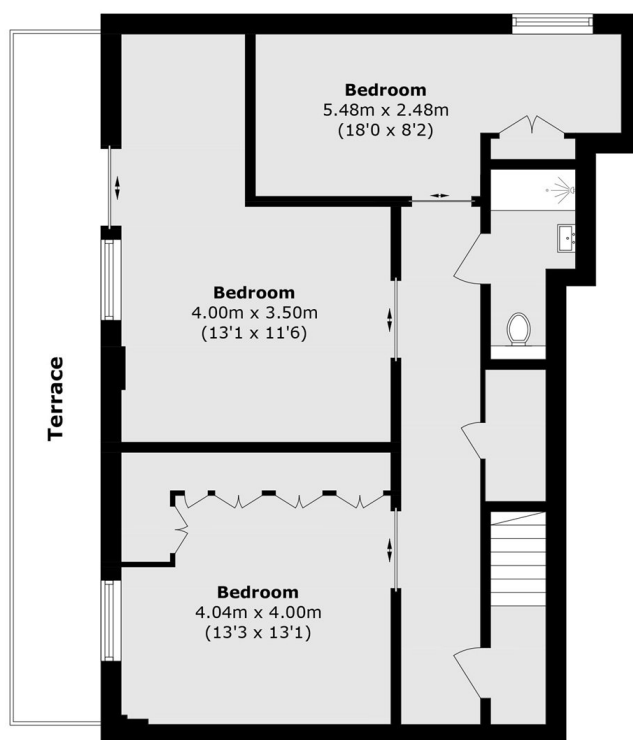
Features

- Five Bedroom
- Split-Level Apartment
- Two Modern Bathrooms
- Completely Refurbished
- Private Outdoor Patio
- South-Facing Aspect
- Excellent Natural Light
- Allocated Parking Space

Pelling Street, London, E14



Ground Floor



First Floor

Total area (approx.): 134.6 sq. m (1448.8 sq. ft)

Terrace Total (approx.): 13.2 sq. m (142.0 sq. ft)