

Visit Alternative Available



Price

£1,500 PCM

Fees Apply



Available 04/09/26

Market Street Bognor
Regis PO21

cubitt&west
Helping you move forwards



Main Features

- [Open House Event](#)
- [Alternative Deposit Option](#)
- [Coastal Location](#)
- [Two bedroom Cottage](#)
- [Balcony](#)
- [Allocated Parking](#)



Deposit required is £1,730.77
Arun District - Council Tax Band Tax Band B

Renting a property is a big commitment and we recommend that you visit the local authority website and these websites which offer helpful information and advice about letting

www.gov.uk/government/publications/how-to-rent

www.gov.uk/private-renting

www.cubittandwest.co.uk/renting/tenancy-fees-individuals/

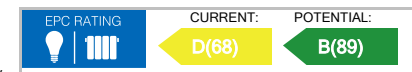
www.gov.uk/green-deal-energy-saving-measures

Call Bognor Regis 01243 860290 ■ cubittandwest.co.uk

IMPORTANT INFORMATION: Please contact our Lettings Team who will confirm the total costs involved in renting this property. For clarification, we wish to inform the prospective tenant that we have prepared these details as a general guide. The agent has not carried out a detailed survey nor tested the services, appliances, or specific fittings (unless otherwise stated), and no warranty can be given as to their condition. All room measurements are taken at floor level. We strongly recommend that all the information which we provide about the property is verified by yourself and your advisers. The contents of this publication are © Cubitt & West, 2015. Cubitt & West is a trading name of Arun Estates Limited Registered in England No. 2597969

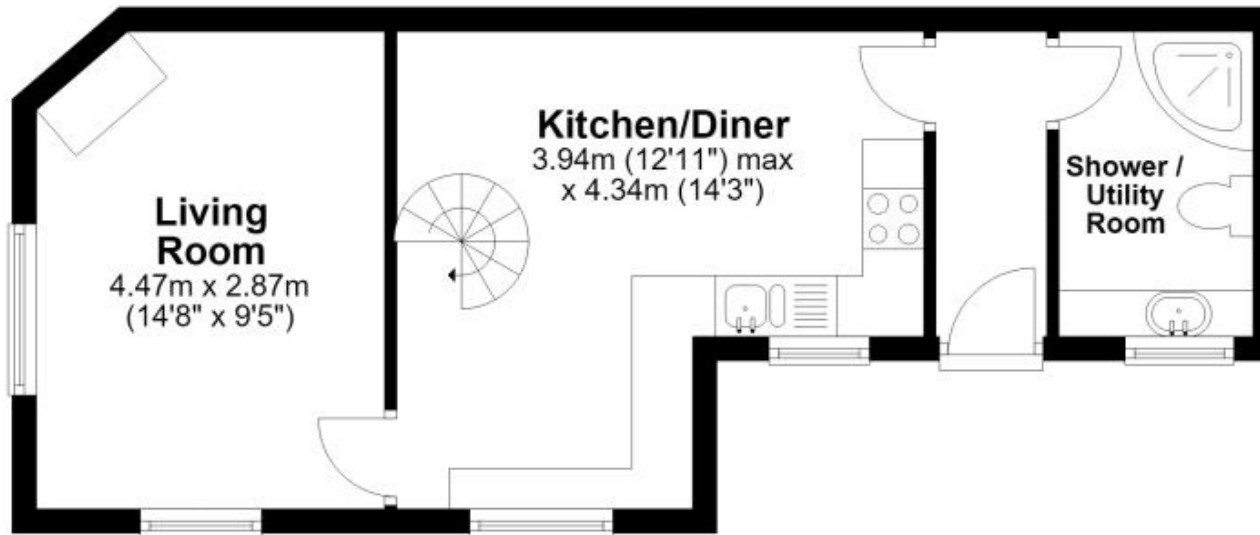
Accommodation

- Kitchen / Diner 14'3 x 12'11**
- Living Room 14'8 x 9'5**
- Shower / Utility Room 7'7 x 5'3**
- Bedroom 1 9'9 x 9'8**
- Balcony**
- Bedroom 2 11'2 x 9'8**
- Shower Room 7'8 x 3'9**
- Allocated Parking**
- Private Front Courtyard Garden**



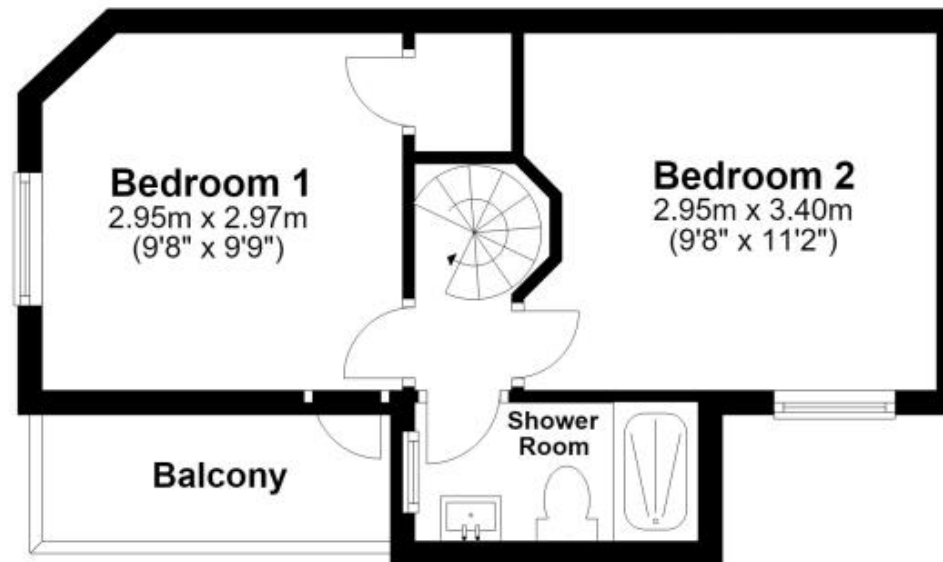
Ground Floor

Approx. 32.4 sq. metres (348.3 sq. feet)



First Floor

Approx. 24.4 sq. metres (263.2 sq. feet)
(excluding Balcony)



Total area: approx. 56.8 sq. metres (611.4 sq. feet)