



The Street, Ashted

V&H £200,000
&
HOMES

The Street, Ashtead

Council Tax band: C

Tenure: Leasehold

EPC Energy Efficiency Rating: C

EPC Environmental Impact Rating: C

- Extended Lease over 200 years
- Open Plan Lounge/Kitchen/Dining Area
- Double Bedroom
- Video Entry System
- Gated Secure Allocated Parking
- Modern Bathroom
- Bike Store





The Street, Ashtead

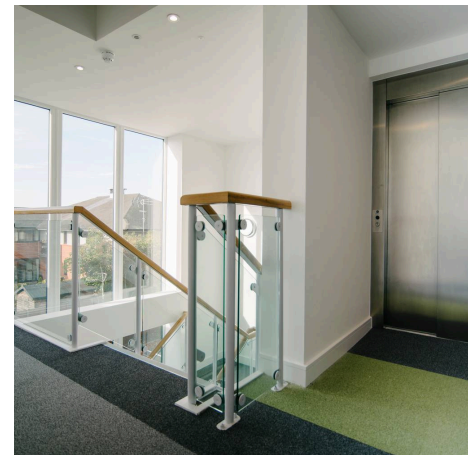
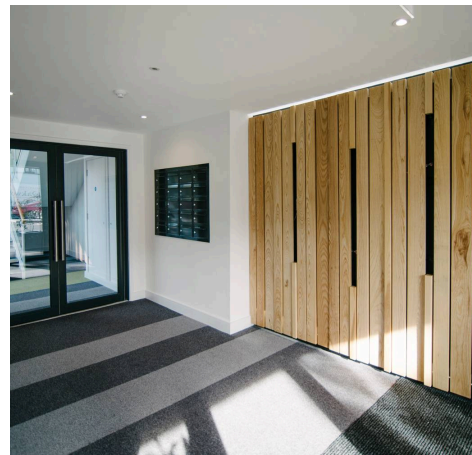
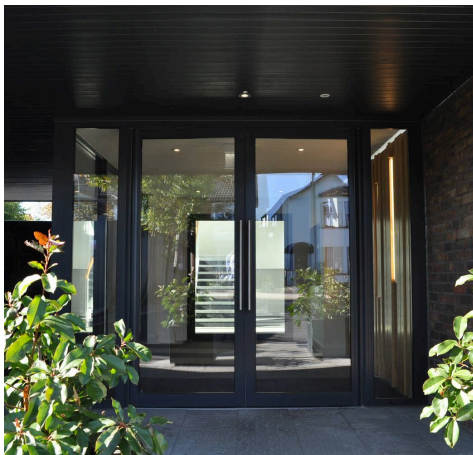
A LUXURY and contemporary apartment offering a HIGH SPECIFICATION open plan living space and a bright double bedroom. Located on the first floor of a highly sought after development in Ashtead Village. The lease has been extended to negate escalating ground rent and to allow for mortgage lending.

Please call for details.

On entering the apartment, there is a bright lounge / dining room which is open plan to the kitchen. The contemporary kitchen is equipped with a range of integrated appliances including a fridge / freezer, washing machine and dishwasher. In addition, there is a double bedroom and a luxurious modern shower room.

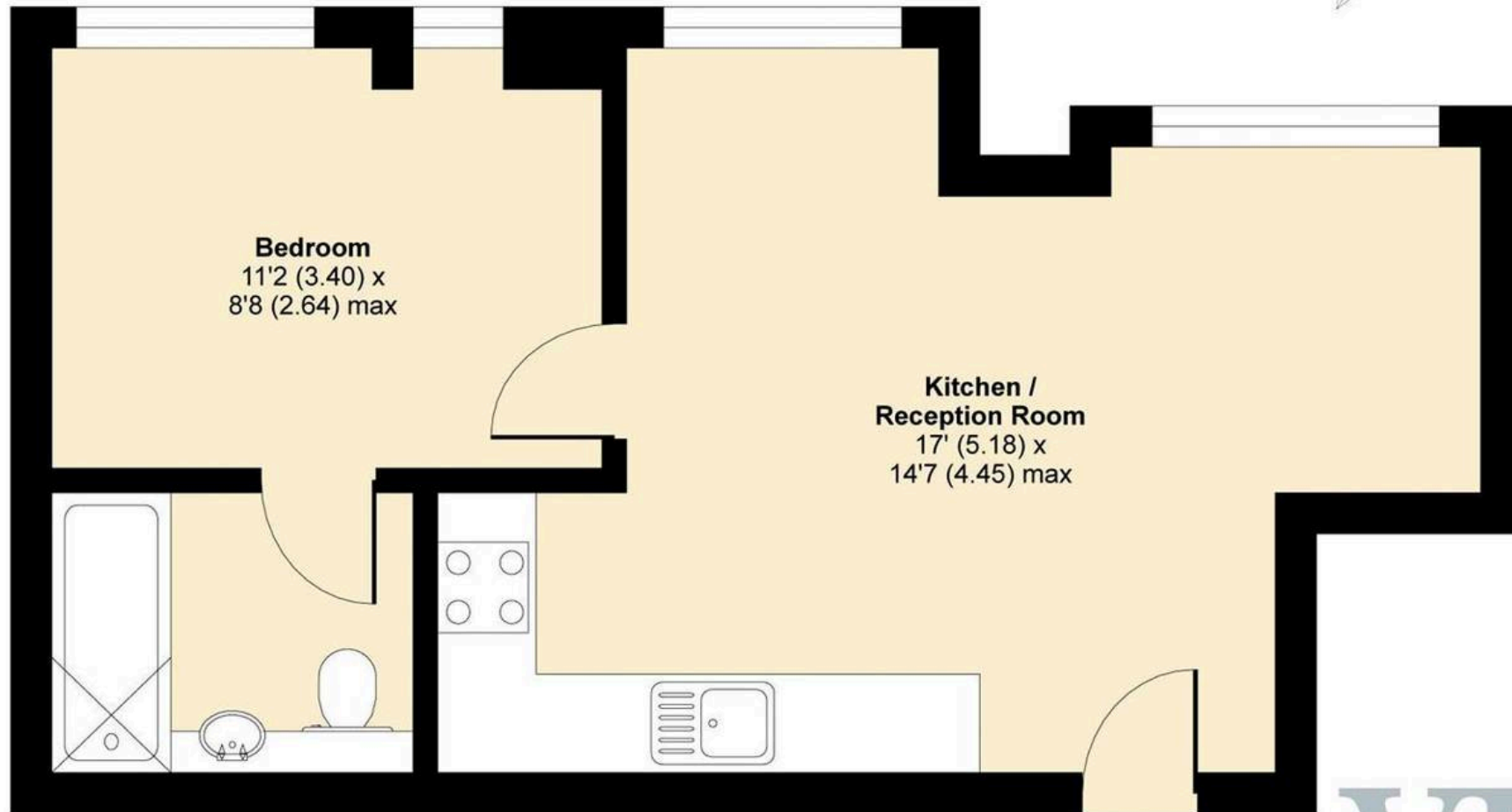
This apartment includes low energy lighting throughout, a secure video entry system, a passenger lift to all floors and allocated secure parking accessed via a gated entrance.

Situated in the very heart of Ashtead Village with its selection of independent shops & restaurants and just 0.7 miles from Ashtead Station, which offers trains to Waterloo and Victoria in approximately 40 minutes.



The Street, Ashted, KT21

APPROX. GROSS INTERNAL FLOOR AREA 371 SQ FT 34.4 SQ METRES



FIRST FLOOR



Whilst every attempt has been made to ensure the accuracy of the floor plan contained here, measurements of doors, windows and rooms are approximate and no responsibility is taken for an error, omission or misstatement. These plans are for representation purposes only as defined by RICS Code of Measuring Practice and should be used as such by any prospective purchaser. Specifically no guarantee is given on the total square footage of the property if quoted on this plan. Any figure given is for initial guidance only and should not be relied on as a basis of valuation.