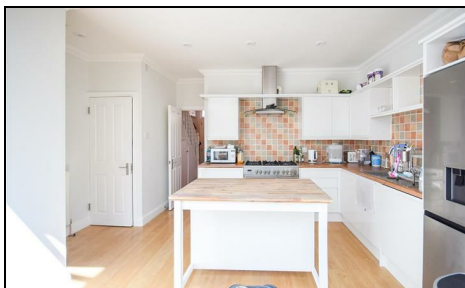


Florence Road Wimbledon, SW19 8TN

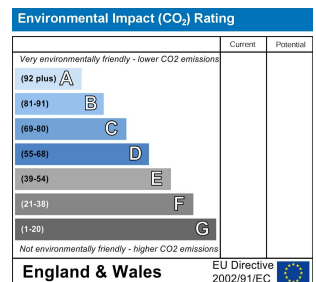
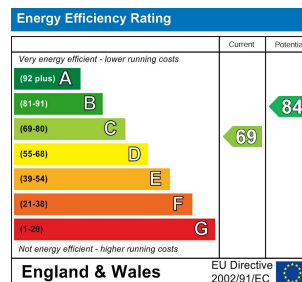
£3,750 Per Month



Four bedroom, two bathroom family house featuring a bright and spacious kitchen/reception room with bifold doors to a south facing garden. Located on a desirable residential street in the heart of the South Park Gardens area of Wimbledon, within easy reach of Wimbledon train station & town centre and Trinity Primary School. Consists of a front reception room, large open plan kitchen/family room, ground floor WC, three double bedrooms, of which the master has an ensuite shower room, plus a single bedroom/study, and family bathroom. EPC C. Council tax band E.



- Four Bedrooms
- Modern Kitchen
- Ground Floor WC
- Two Bathrooms
- South Facing Garden
- First Months Rent in Advance
- Damages Deposit = 5 Weeks Rent
- Holding Deposit = One Weeks Rent
- EPC Band C
- Council tax band E



Although these particulars are believed to be correct, their accuracy is not guaranteed and they do not form part of any contract.

Celebrating 30 years of successful Sales and Lettings in Merton

