



**SALES**

**LETTINGS**

**MANAGEMENT**

[chiswick@tatepartnership.co.uk](mailto:chiswick@tatepartnership.co.uk)

**020 8996 0000**

**TATEPARTNERSHIP.CO.UK**



**Chaseley Drive, W4**

**£2,000 pcm**

**\*\*Gated Development\*\***

At 624 sq/ft, this purpose built 2 bed 2 bath ground floor apartment sits Privately within this popular Gated development, close to Gunnersbury station. Fitted with new carpets just 6 months ago, the accommodation comprises; entrance hall with deep storage cupboard, main double bedroom with en-suite shower room, second bedroom, family bathroom, living room and separate kitchen. Outside are well kept communal gardens and Private Parking with allocated parking space. The location is 5 minutes walk to Gunnersbury Station (District & Overground Lines) and Chiswick High Road, with an abundance of shopping/dining/transport facilities. The A4(M) into Central London and out to Heathrow, is a few minutes drive. Available early Feb. Furnished. Hounslow Band E.

Stubbs Court, Chiswick, W4

Approximate Gross Internal Area = 58.0 sq m / 624 sq ft

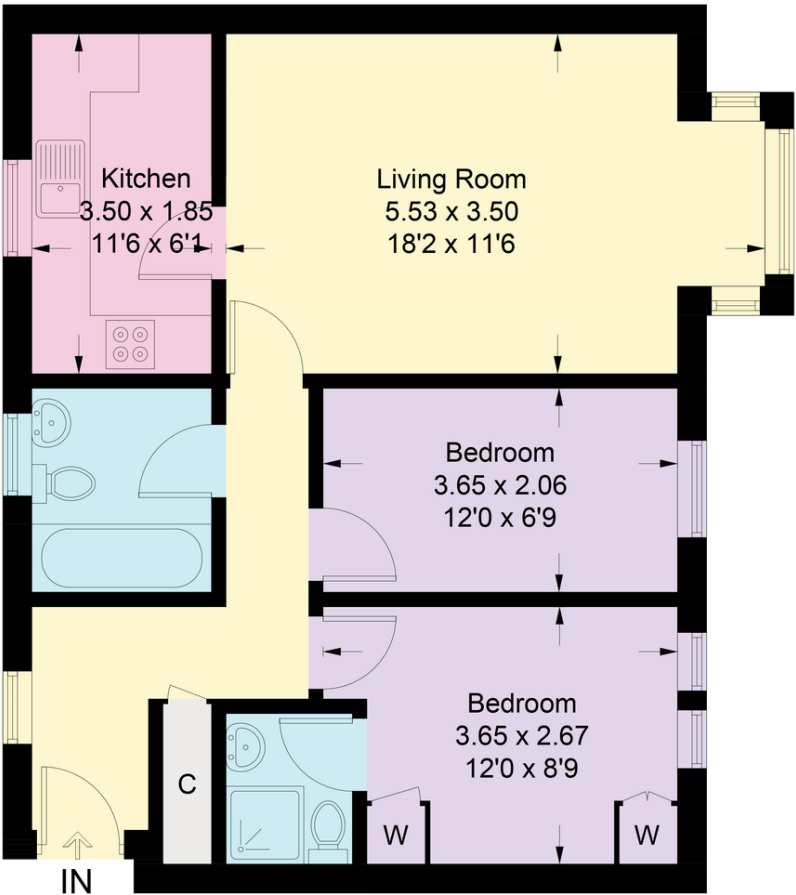


Illustration for identification purposes only, measurements are approximate, not to scale. floorplansUsketch.com © (ID672006)

EPC

