

Homer Drive, E14

£623 Per week

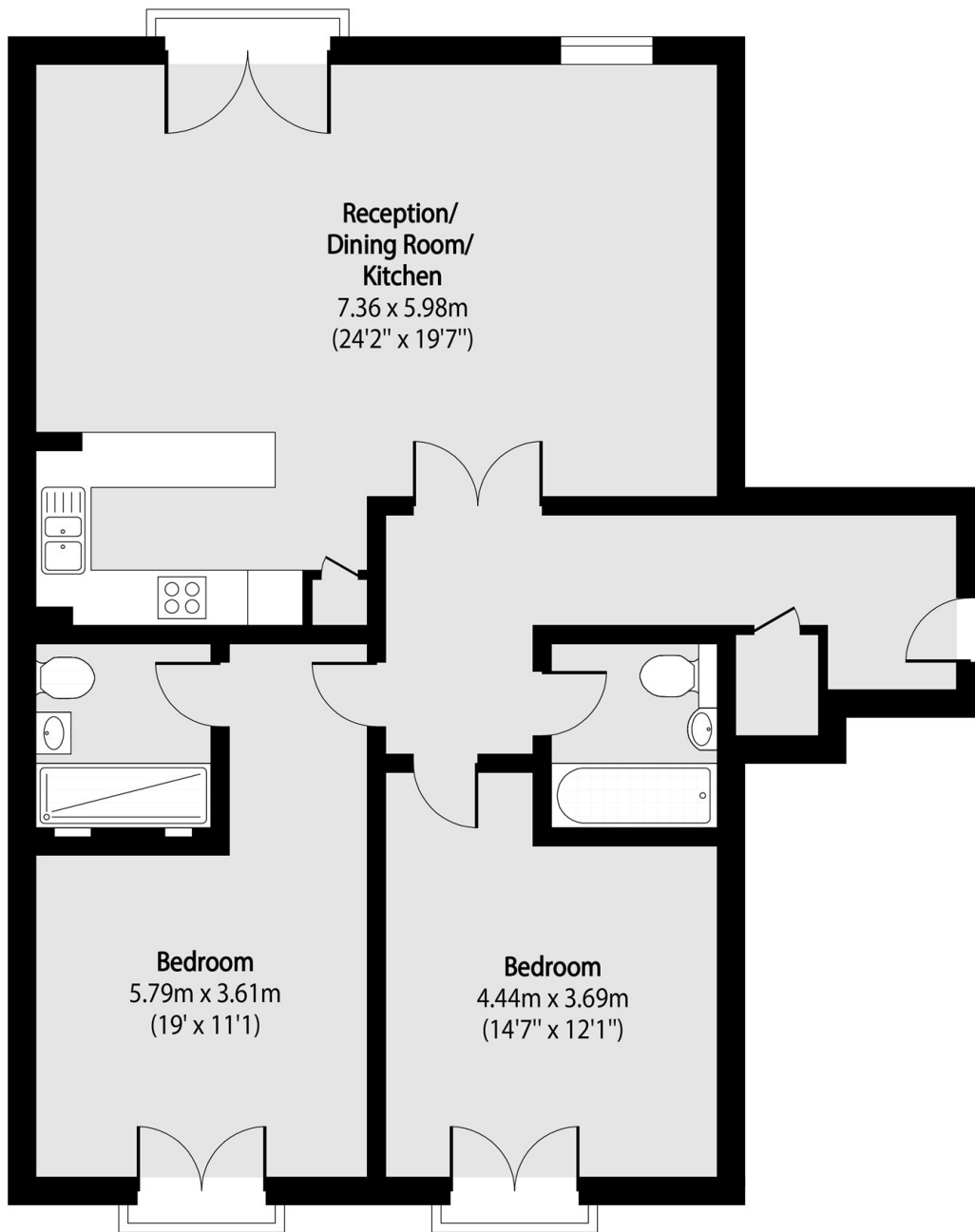
A newly refurbished two-bedroom, two-bathroom apartment in a sought-after river-facing development. The property features wooden flooring, a Juliette balcony, access to leisure facilities, and is offered unfurnished.

Poseidon Court is within walking distance of Mudchute DLR station, providing direct links to Central London and City Airport.

Features

- Two Bedrooms
- Two Bathrooms
- Refurbished
- River Facing
- Swimming Pool
- Residents Gym

Homer Drive, London, E14



Total area (approx): 95.03 sq m (1023 sq. ft)