



Webbs
estate agents
01922 663399
webbs.co.uk
FOR SALE

Webbs
Helping people move since 1994

Lambourn Close | Bloxwich, Walsall | WS3 3RG
Offers In The Region Of £335,000

Webbs
estate agents

Summary

****STUNNING BUNGALOW**TWO RECPETION ROOMS**FITTED KITCHEN**FITTED BATHROOM**LANDSCAPED REAR GARDEN**LARGE DRIVE**GARAGE**VIEWING ESSENTIAL****

Nestled in the tranquil cul-de-sac of Lambourn Close, Bloxwich, this deceptively spacious two-bedroom detached bungalow offers a delightful blend of comfort and convenience. The property is ideally situated close to local amenities, making it a perfect choice for those seeking a peaceful yet accessible lifestyle.

Upon arrival, you are greeted by a generous driveway that provides ample parking for one vehicle, along with a garage for additional storage. Stepping inside, the entrance hall leads you into a welcoming lounge, which features double doors that open into a charming dining room. This space is further enhanced by patio doors that lead directly to the rear garden, allowing for a seamless flow between indoor and outdoor living.

The fitted kitchen is conveniently located adjacent to the dining room, making it easy to entertain guests or enjoy family meals. The bungalow boasts two well-proportioned double bedrooms, both of

Key Features

- DECEPTIVLEY SPACIOUS DETACHED BUNGALOW
- GARAGE
- FITTED KITCHEN
- STUNNING LOCATION
- VIEWING ESSENTIAL
- LARGE DRIVEWAY
- TWO RECPETION ROOMS
- FITTED BATHROOM
- CUL-DE-SAC
- CALL WEBBS TO SECURE YOUR VIEWING ON 01922 663399

Rooms and Dimensions

Entrance Porch

Hall

Lounge

21'10" x 11'11" (6.670m x 3.652m)

Sitting Dining Room

17'10" x 7'10" (5.440m x 2.401m)

Kitchen

19'4" x 7'9" (5.903m x 2.383m)

Bedroom One

13'8" x 12'0" (4.182m x 3.66m)

Bedroom Two

12'1" x 10'7" (3.684m x 3.235m)

Family Bathroom

9'6" x 8'0" (2.908m x 2.459m)

Garage

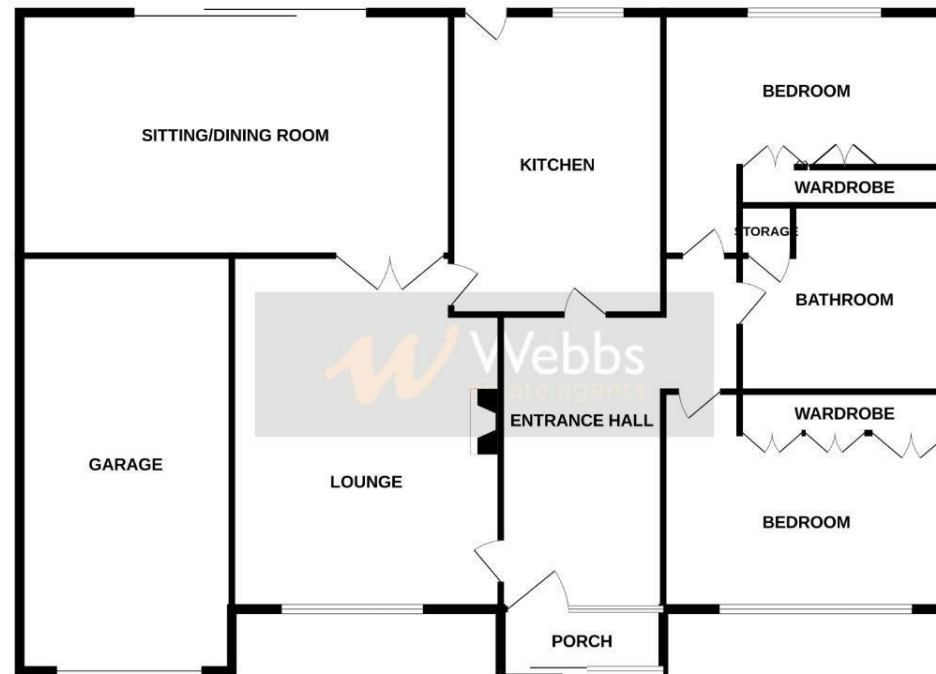
Identification Checks B

Agent Note



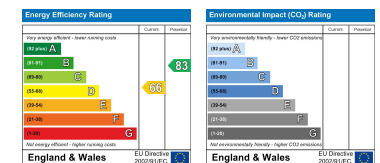


GROUND FLOOR



Whilst every attempt has been made to ensure the accuracy of the floorplan contained here, measurements of doors, windows, rooms and any other items are approximate and no responsibility is taken for any error, omission or mis-statement. This plan is for illustrative purposes only and should be used as such by any prospective purchaser. The services, systems and appliances shown have not been tested and no guarantee as to their operability or efficiency can be given.
Made with Metropix ©2025

Webbs Estate Agents - endeavour to maintain accurate depictions of properties in Virtual Tours, Floor Plans and descriptions, however, these are intended only as a guide and purchasers must satisfy themselves by personal inspection.



212 High Street, Bloxwich, Walsall, WS3 3LA

Tel: 01922 663399 | Email: bloxwich@webbestateagents.co.uk | www.webbestateagents.co.uk

