



16 Bordon Road, Edgeley  
Stockport

£350,000

**GASCOIGNE  
HALMAN**

THE AREA'S LEADING ESTATE AGENCY



# 16 Bordon Road

Stockport, Stockport

A stylish three-bed end terrace with open plan living, lantern roofed family room, sociable kitchen, downstairs shower room, cellars and loft. All available with no vendor chain.

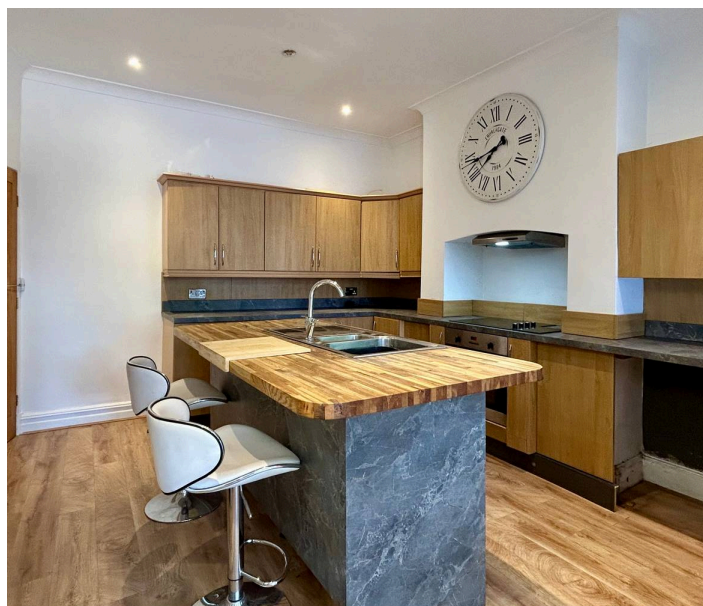
Council Tax band: B

Tenure: Freehold

EPC Energy Efficiency Rating: D

EPC Environmental Impact Rating: E

- Decked patio area
- Bi-fold doors (seamless indoor-outdoor living)
- Modern kitchen with matching island
- Open plan living areas
- Lantern roof to family room (abundant natural light)
- Bay windows (character and natural light)
- Decorative fireplace
- Downstairs Shower Room
- Useful Multi-chambered cellar
- No vendor chain



# 16 Bordon Road

Stockport, Stockport

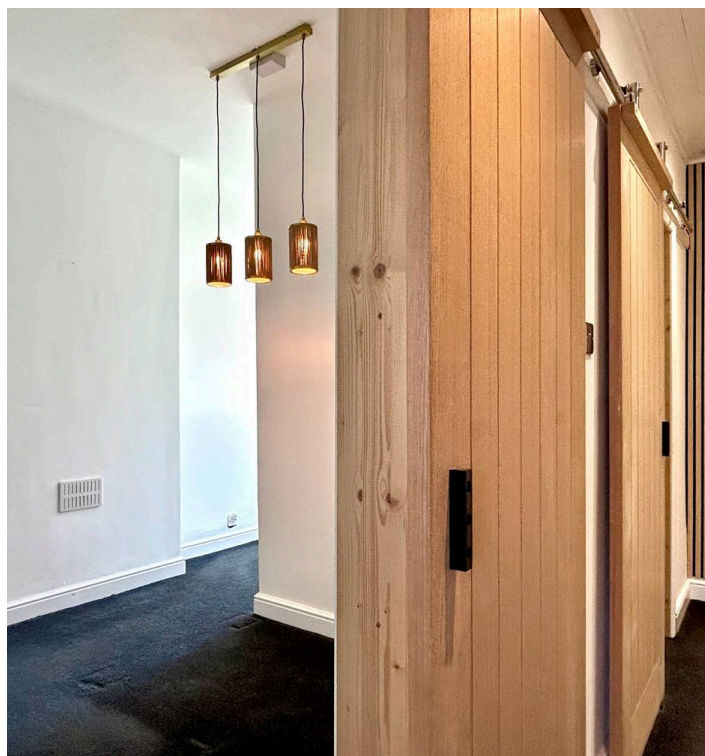
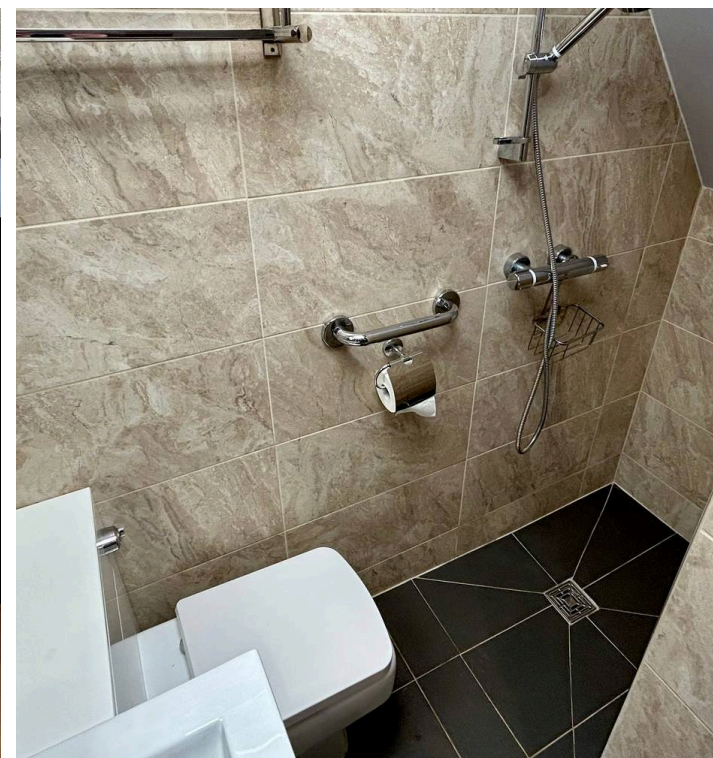
Welcome to this fantastic three-bedroom end of terrace house, perfect for anyone looking for a stylish and comfortable home with a modern twist. Step inside and you'll immediately notice the spacious open plan living areas, ideal for both relaxing evenings and entertaining guests. The family room is a real highlight, featuring a striking lantern roof that floods the space with natural light, creating a bright and airy atmosphere all year round.

The bay windows add a touch of character and charm, while also allowing even more light to pour in.

For those who love to cook or entertain, the modern kitchen is sure to impress, complete with a matching island that's perfect for casual meals, coffee mornings or catching up with friends.

The decorative fireplace adds a cosy focal point to the living space, making it feel warm and inviting. Bi-fold doors open seamlessly from the living area, making it easy to extend your living space whenever you want.

There's also a handy downstairs shower room, offering extra convenience for busy households or visiting guests.





# 16 Bordon Road

Stockport, Stockport

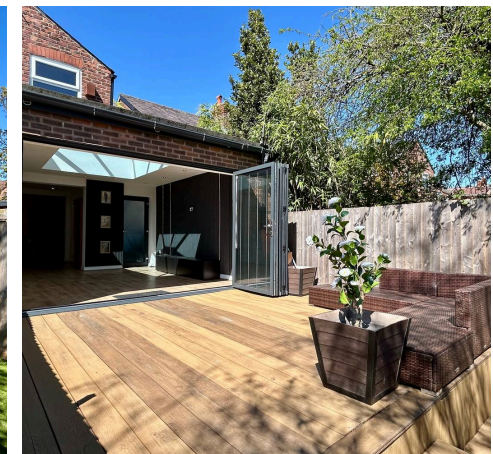
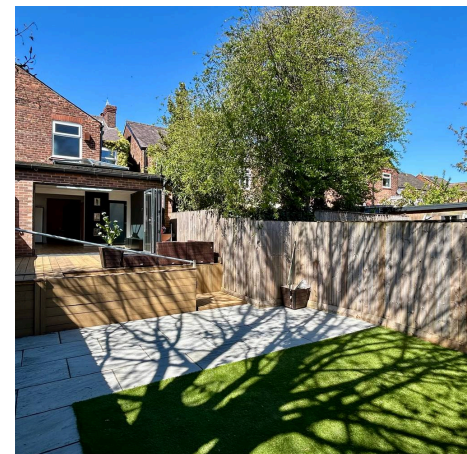
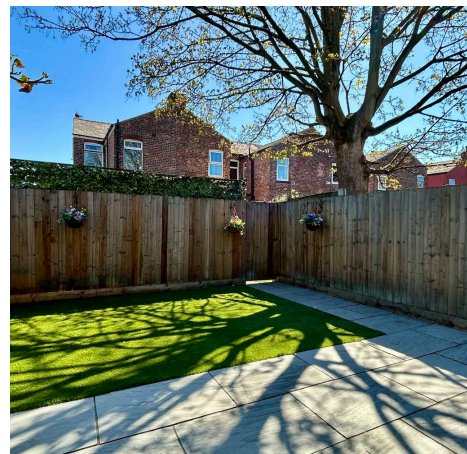
Storage is taken care of with a useful multi-chambered cellar, providing plenty of room for everything from bikes to wine or even a large space for future conversion.

Upstairs, you'll find a generous principle bedroom, two additional bedrooms and a useful loft space accessed by a paddle ladder on the landing .

The property is offered with no vendor chain, so you can move in and start enjoying your new home without delay. Whether you're a growing family, a couple looking for more space, or simply want a home that's ready to move straight into, this house ticks all the boxes.

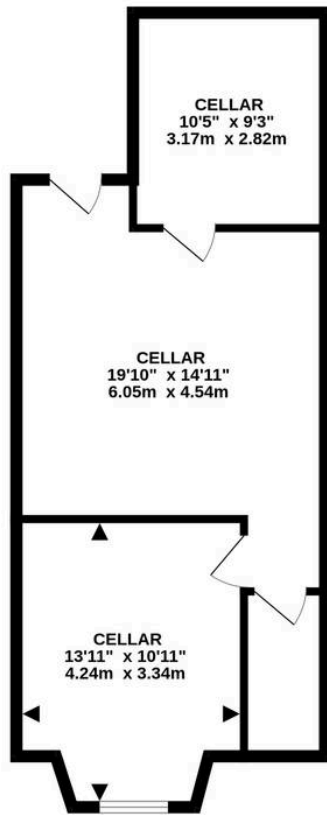
With its blend of modern features, character details, and thoughtful layout, it's a property that really does have something for everyone.

Don't miss out on the chance to make this house your new home. Book your viewing today and see for yourself what makes this property so special.

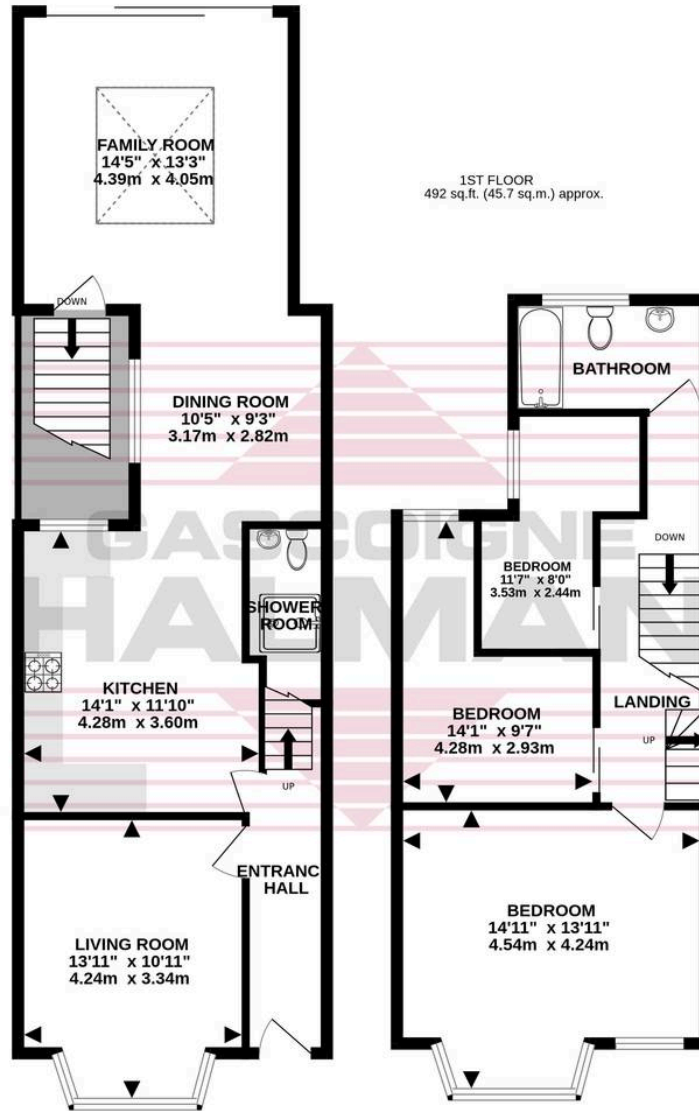


GROUND FLOOR  
683 sq.ft. (63.5 sq.m.) approx.

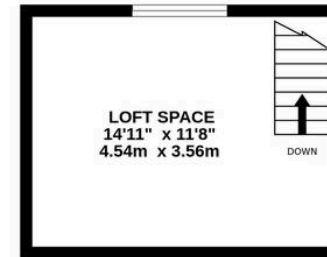
CELLARS  
505 sq.ft. (46.9 sq.m.) approx.



1ST FLOOR  
492 sq.ft. (45.7 sq.m.) approx.



2ND FLOOR  
174 sq.ft. (16.2 sq.m.) approx.



TOTAL FLOOR AREA : 1854 sq.ft. (172.2 sq.m.) approx.

Whilst every attempt has been made to ensure the accuracy of the floorplan contained here, measurements of doors, windows, rooms and any other items are approximate and no responsibility is taken for any error, omission or mis-statement. This plan is for illustrative purposes only and should be used as such by any prospective purchaser. The services, systems and appliances shown have not been tested and no guarantee as to their operability or efficiency can be given.  
Made with Metropix ©2026



THE AREA'S LEADING ESTATE AGENCY