



BLACKHEATH HILL, SE10

£425,000

Duplex apartment
Victorian period
Two bedrooms
Private garden
Share of freehold
Energy rating: c

@marshandparsons
marshandparsons.co.uk

MARSH &
PARSONS



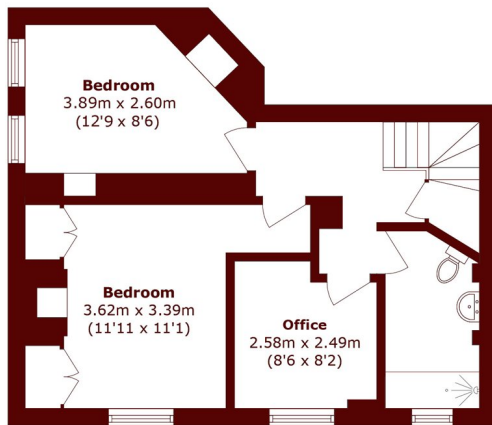
ABOUT THE PROPERTY

A duplex Victorian conversion apartment, featuring a share of freehold and private garden. Inside you will find a spacious lounge/diner, an open plan kitchen, two double bedrooms, a study/third bedroom and a shower room. Includes ample storage, wood floors and own entrance door.

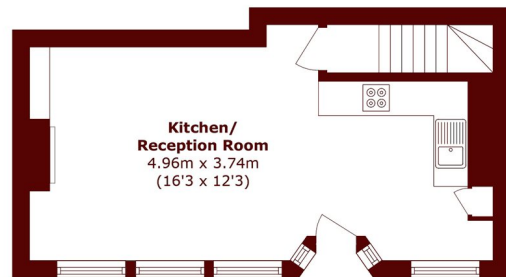
Ideally located for Point park, the Heath and Greenwich park, all within a few minutes walk away. Walking distance to either Blackheath rail station, Greenwich rail and DLR stations and plenty of bus routes. Greenwich town centre is also within walking distance.



STEP INSIDE BLACKHEATH HILL



Lower Ground Floor



Ground Floor

Total area (approx.): 76.5 sq. m (823.4 sq. ft)

Greenwich
020 8312 8312

Energy Rating: C We aim to make our particulars both accurate and reliable. However, they are not guaranteed; nor do they form part of an offer or contract. If you require clarification on any points then please contact us, especially if you're traveling some distance to view. Please note that appliances and heating systems have not been tested and therefore no warranties can be given as to their good working order

**MARSH &
PARSONS**