
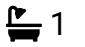



Bishops Close, FLEET, GU52 7TU

Offers Over £630,000

 3  1  2

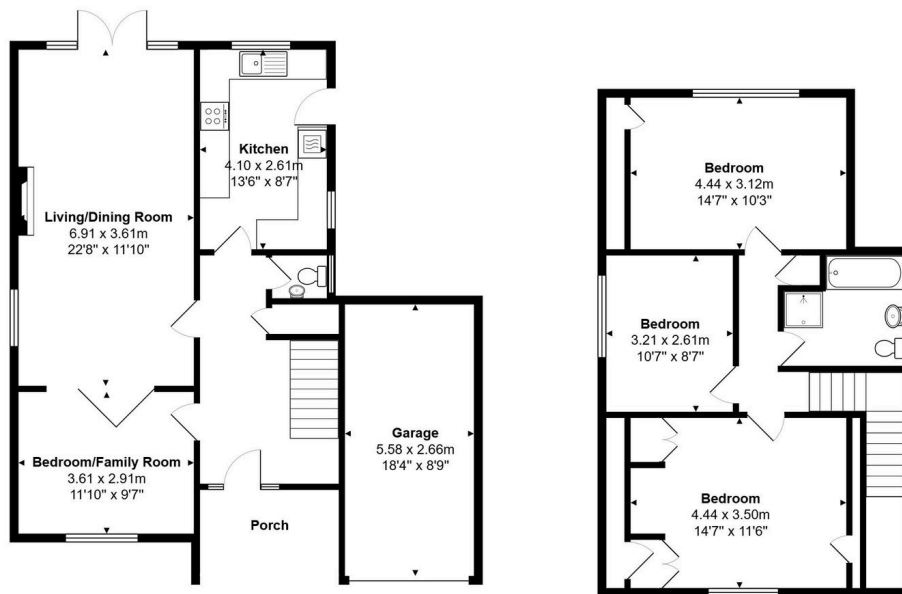


Located in a quiet cul-de-sac and presented in excellent order is this lovely detached home ideally situated in the Courtmoor area of Fleet close to local schools.

Key Features

- Cul-de-sac Location
- Three/Four Bedrooms
- Refitted Kitchen With Integrated Appliances
- Refitted Bathroom
- Courtmoor School Catchment
- Presented In Excellent Order
- Large Living/Dining Room With Log Burner
- Family Room/Bedroom
- Garage & Off Road Parking
- Private Landscaped Gardens

5, Bishops Close, Fleet, GU52 7TU



Total Area: 140.4 m² ... 1511 ft²

All measurements are approximate and for display purposes only