



---

**Asking Price £210,000 Leasehold**

**1 Bedroom, Apartment - Retirement**

10, Emden House Barton Lane, Headington, Oxford, Oxfordshire, OX3 9JU

 0800 077 8717

 [sales@churchillsl.co.uk](mailto:sales@churchillsl.co.uk)

 [churchillsl.co.uk](http://churchillsl.co.uk)

**Churchill**  
Sales & Lettings  
Retirement Property Specialists

# Emden House

The apartments at Emden House are owned by Secure Retirement Association (Headington) Limited, a non-profit making limited company run on co-operative lines. Residents become Members of the Association and shareholders when they lease an apartment, by making a loan to the value of the apartment.

Emden House stands in its own grounds in the village conservation area of Headington, with views over open country to the North and Bury Knowle Park to the South. There is a gate from Emden House garden into the park. Shops, including Waitrose and post office, are about a quarter of a mile away across the park, or down Old High Street. The local library is in the park. From the centre of Headington there are buses every ten minutes into Oxford, and a frequent coach service to London.

The House Manager is on hand throughout the day to support the Owners and keep the development in perfect shape as well as arranging many regular events in the Owners' Communal Area from coffee mornings to games afternoons and film nights. There is also a Library and Laundry Room for use by the Owners.

There is a call warden service and smoke and heat detectors to provide unrivalled peace of mind. Emden House is managed by the award winning Churchill Estates Management, working closely with Churchill Living and Churchill Sales & Lettings to maintain the highest standards of maintenance and service for every lodge and owner.

Emden House requires at least one apartment Owner to be over the age of 55.



# Property Overview

**\*\*ONE BEDROOM GROUND FLOOR RETIREMENT APARTMENT WITH PATIO\*\***

Churchill Sales & Lettings are delighted to be marketing this lovely one bedroom ground floor apartment with garden views and a recently added larger patio area. The property offers deceptively spacious accommodation and is presented in good order throughout.

The Living Room is a good-sized room with lots of natural light. There is ample space for living and dining room furniture. Double doors lead to an owners private patio with views of the communal gardens.

The Kitchen is accessed via the Corridor and offers a range of eye and base level units with working surfaces over and tiled splashbacks. There is a built-in waist height oven, 4-ring electric hob with extractor hood over, a fridge and freezer. A window allows for light and ventilation.

The bedroom is a good-sized double room with a useful built-in wardrobe and room for additional bedroom furniture if required. A door leads to a private patio area.

The Shower Room offers a large shower cubicle with handrail and shower seat, a WC and wash hand basin with mirror cabinet above. There is also a storage cupboard.

Perfectly complementing this wonderful apartment are three useful storage cupboards located in the hallway.

Call us today to book your viewing at Emden House!



# Features

- One bedroom ground floor retirement apartment
- Recently added large patio area
- Fitted Kitchen
- Owners' Communal Area and Library
- Call warden service
- Close to the town centre & excellent transport links
- Lift to all floors
- Communal gardens
- House Manager available 5 days a week



# Key Information

Service Charge (Year ending 31st January 2027)  
£7,237.43 per annum.

Approximate Area = 553 sq ft / 51.4 sq m  
For identification only - Not to scale

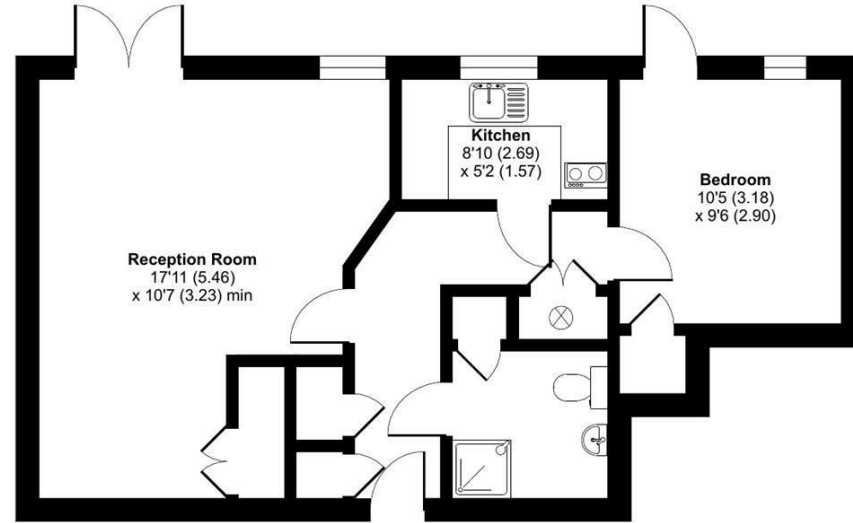
Ground rent is not collected at this development

Council Tax Band C

A new 50 year Lease is granted on property transfer.  
Please refer to Churchill Estates Management  
Please check regarding Pets with Churchill Estates  
Management. Any consents given in relation to pets are  
subject to the terms of the lease and any further rules  
and regulations made by Churchill Estates Management.

Service charges include: Apartment heating and water,  
call warden service, buildings insurance, communal water  
and sewerage rates, communal cleaning, utilities and  
maintenance, garden maintenance, lift maintenance,  
House Manager and a contribution to the contingency  
fund.

A 2% contribution of the final selling price to the  
contingency fund is payable by the Seller upon  
completion of the sale of the property.



EPC Rating: C



Floor plan produced in accordance with RICS Property Measurement Standards incorporating International Property Measurement Standards (IPMS2 Residential). © nichecom 2024. Produced for Churchill Estate Agents. REF: 1193059

DESCRIPTION Measurements are approximate and some may be maximum on irregular walls.

CONSENTS We have not had sight of any relevant building regulations, guarantees or planning consents. All relevant documentation pertaining to this property should be checked with your legal advisor before exchanging contracts.

Property Particulars Disclaimer: These particulars are intended only as general guidance. The Company therefore gives notice that none of the material issued or visual depictions of any kind made on behalf of the Company can be relied upon as accurately describing any of the Specified Matters prescribed by any Order made under the Consumer Protection from Unfair Trading Regulations, 2008. Nor do they constitute a contract, part of a contract or a warranty.



☎ 0800 077 8717

✉ sales@churchillsl.co.uk

🌐 churchillsl.co.uk

**Churchill**  
Sales & Lettings  
Retirement Property Specialists