



GINGER COW
ESTATE AGENTS

01234 860215

****30% SHARED OWNERSHIP** Brooklands Avenue, Wixams**

£70,000

2 1

Located within the growing community of Wixams, this two-bedroom first floor apartment is available to purchase through the Shared Ownership scheme, offering an excellent opportunity for buyers to step onto the property ladder.

The apartment offers well-proportioned accommodation including a welcoming entrance hall, a bright open-plan kitchen/living/dining space and two generous double bedrooms. A modern bathroom completes the layout.

Externally, the property benefits from a communal garden and one allocated parking space to the rear. The apartment is connected to all main services and benefits from gas central heating.

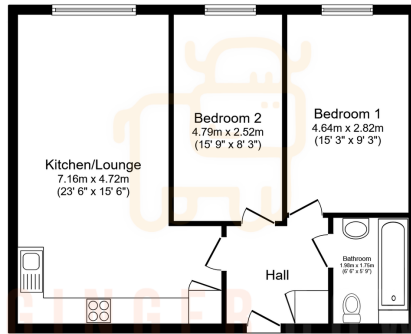


Floor Area: 700 sq. ft.

Tenure: Leasehold

Service Charge: £1535.04 per annum

Ground Rent: £4892.88 per annum



Floor Plan
Floor area 64.7 sq.m. (697 sq.ft.)

Total floor area: 64.7 sq.m. (697 sq.ft.)
This floor plan is for illustrative purposes only. It is not drawn to scale. Any measurements, floor areas (including any total floor area), openings and orientations are approximations. No details are guaranteed; they cannot be relied upon for any purpose and do not form any part of any agreement. No liability is taken for any error, omission or misstatement. A party must rely upon its own inspections. Powered by www.Property24.co.uk

