



Osmington Gardens, Strensall, York

£315,000

**Stephensons**  
estate agents & chartered surveyors

[stephensons4property.co.uk](http://stephensons4property.co.uk)

# S

Osmington  
Gardens,  
York YO32 5BE

Est. 1871

£315,000

Having undergone a comprehensive programme of renovation and improvement, this exceptional three-bedroom semi-detached home has been transformed by the current owners into a stylish, contemporary property finished to an outstanding standard throughout. Featuring a superb rear kitchen extension, beautifully landscaped gardens and a detached garage, the property offers high-quality, move-in-ready accommodation in the heart of popular Strensall.

The accommodation has been thoughtfully redesigned with modern living in mind, centred around a stunning open-plan kitchen and dining space created through a rear extension. Fitted with an attractive shaker-style kitchen, quartz worktops, integrated appliances and a central island, the room is enhanced by skylights, bi-fold doors and elegant herringbone flooring, creating a bright and sociable hub of the home. The sitting room has been beautifully updated and features a bespoke media wall, while a contemporary ground floor WC completes the layout.

To the first floor are three well-proportioned bedrooms and a luxurious family bathroom finished with stylish marble-effect tiling and quality fittings.

Externally, the rear garden has been professionally landscaped to create an attractive and low-maintenance outdoor space, featuring porcelain paving, raised planting beds, artificial lawn and a generous seating area ideal for entertaining. A detached garage is located en bloc to the rear, providing valuable storage and parking.



Tenure: Freehold

Services/Utilities: Mains Gas, Electricity, Water and Sewerage are understood to be connected

Broadband: Up to 1600 Mbps\*

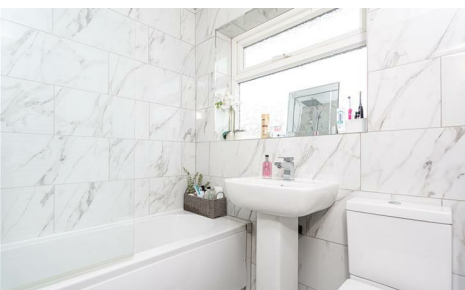
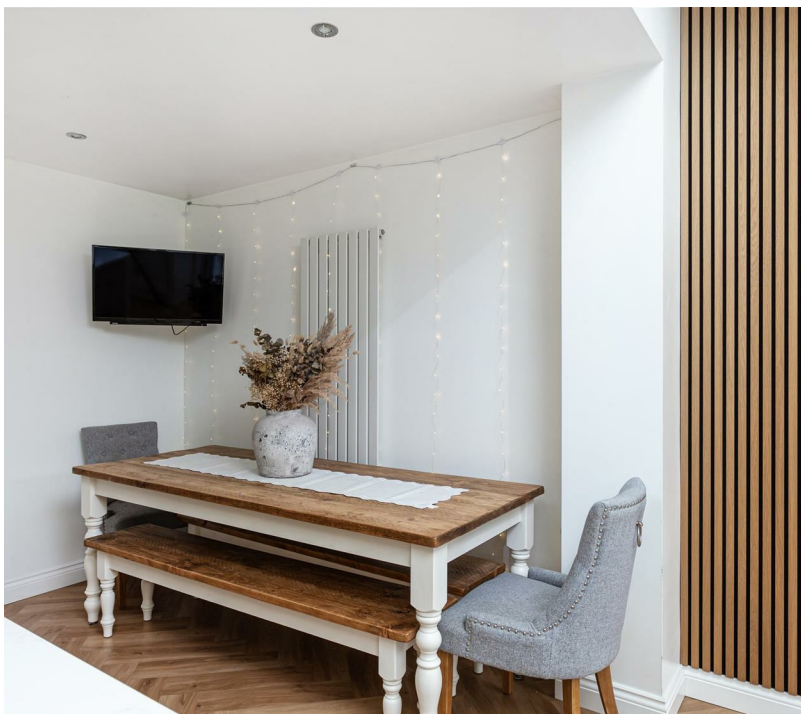
EPC Rating: D

Council Tax: C

Current Planning Permission: No current valid planning permissions

Imagery Disclaimer: Some photographs and videos within these sales particulars may have been digitally enhanced or edited for marketing purposes. They are intended to provide a general representation of the property and should not be relied upon as an exact depiction.

\*Download speeds vary by broadband providers so please check with them before purchasing.



Strensall offers an excellent range of local amenities including shops, cafés, pubs, a primary school, doctors' surgery and regular bus links into York city centre. The nearby Strensall Common and surrounding countryside provide superb opportunities for walking and outdoor recreation.

## Partners:

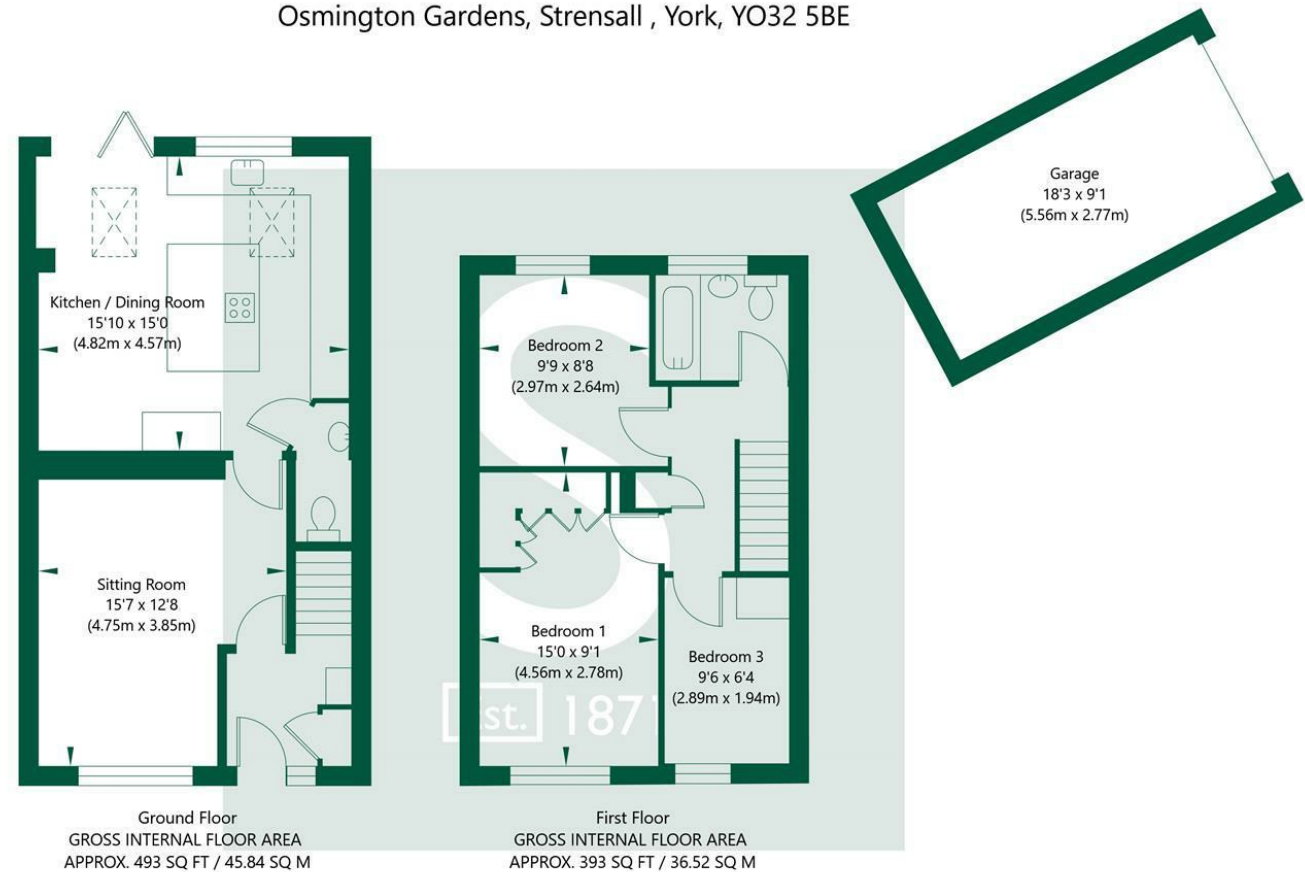
J F Stephenson MA (Cantab) FRICS FAAV  
I E Reynolds BSc (Est Man) FRICS  
R E F Stephenson BSc (Est Man) MRICS FAAV  
N J C Kay BA (Hons) pg. dip MRICS  
O J Newby FNAEA  
J E Reynolds BA (Hons) MRICS  
R L Cordingley BSc FRICS FAAV  
J C Drewniak BA (Hons)  
E G Newby MRICS  
T Brooks MNAEA

## Associate Partners:

N Lawrence  
I Jarvis MNAEA

York: 01904 625533  
Boroughbridge: 01423 324324  
Easingwold: 01347 821145  
Selby: 01757 706707  
Haxby: 01904 809900

## Osmington Gardens, Strensall, York, YO32 5BE



NOT TO SCALE - FOR ILLUSTRATIVE PURPOSES ONLY  
APPROXIMATE GROSS INTERNAL FLOOR AREA 1052 SQ FT / 97.76 SQ M - (Excluding Garage)  
All measurements and fixtures including doors and windows are approximate and should be independently verified.  
[www.exposurepropertymarketing.com](http://www.exposurepropertymarketing.com) © 2026

