





## Clarence Parade, Cheltenham

NO ONWARD CHAIN. On-site gym, lift, and a chance to own a piece of Cheltenham history. The Clarence is a stunning Grade II listed Regency building, restored with original features and soundproofing.

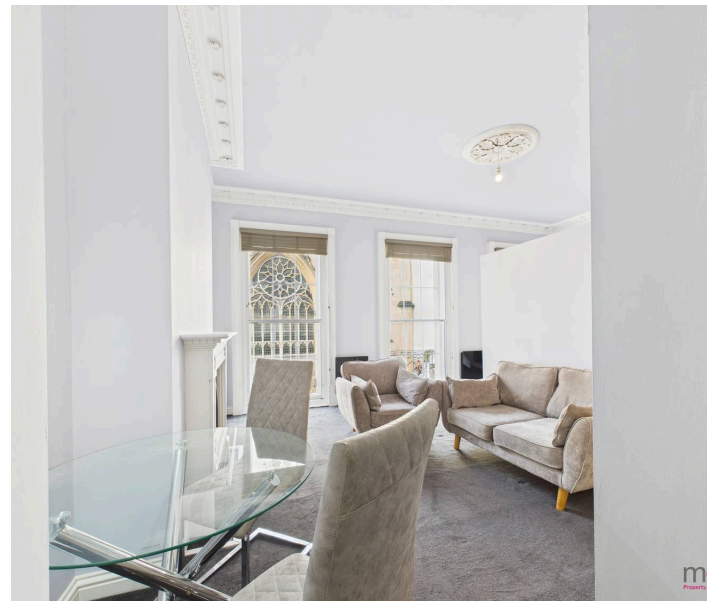
Council Tax band: A

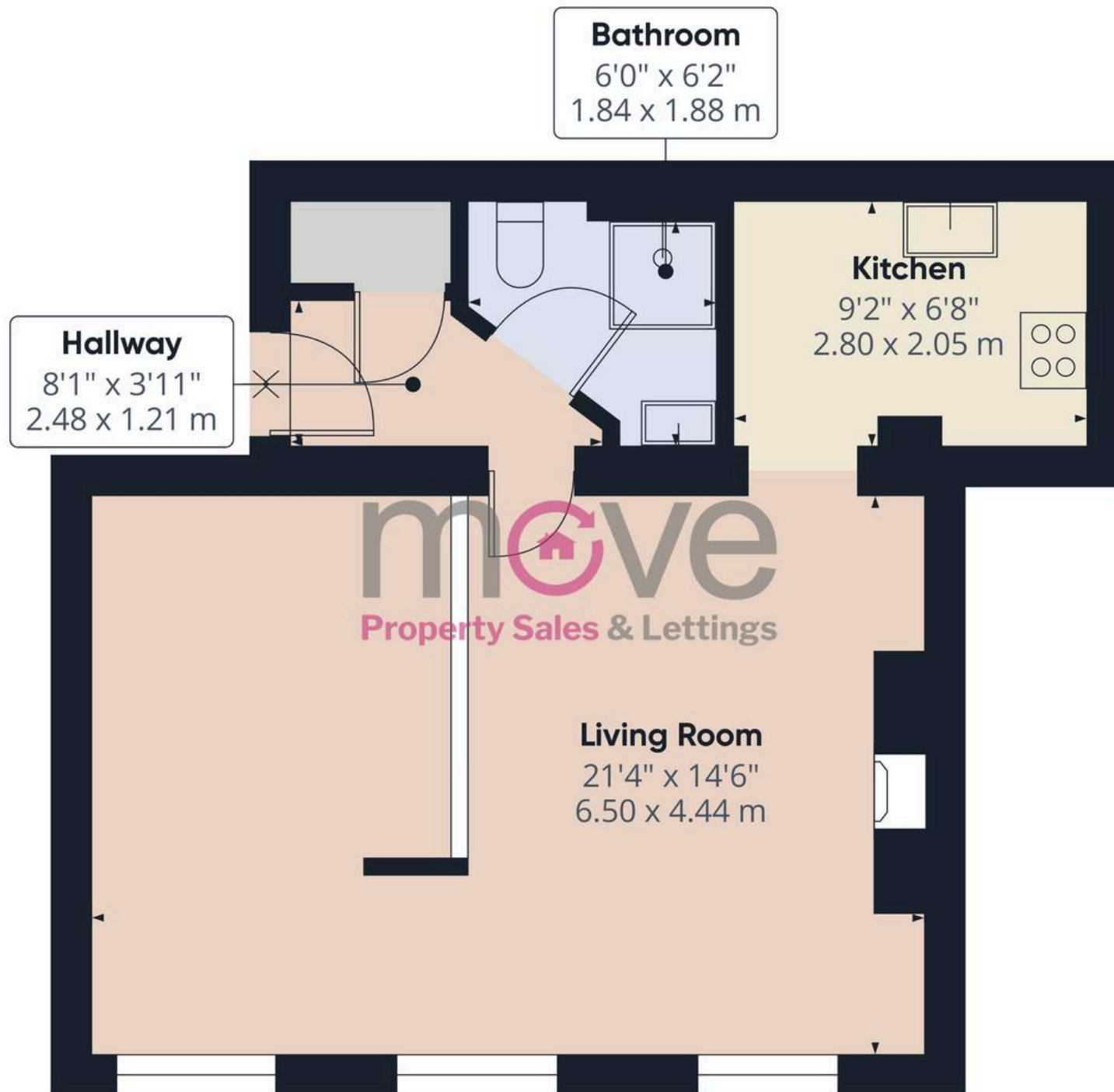
Tenure: Leasehold

EPC Energy Efficiency Rating: D

EPC Environmental Impact Rating:

- SHARE OF FREEHOLD!
- Opportunity to purchase a piece of Cheltenham history
- Town Centre Location
- 24/7 Access To Onsite Gym
- Large Open-Plan Living Accommodation
- Regency Apartment
- LIFT ACCESS & SECURE ENTRANCE
- CHAIN FREE
- Parking Permit





Approximate total area<sup>(1)</sup>

430.88 ft<sup>2</sup>

40.03 m<sup>2</sup>

(1) Excluding balconies and terraces

While every attempt has been made to ensure accuracy, all measurements are approximate, not to scale. This floor plan is for illustrative purposes only.

Calculations are based on RICS IPMS 3C standard.

GIRAFFE 360





## Move Estate Agents Cheltenham

1 The Clarence Clarence Parade, Cheltenham - GL50 3NY

01242 257333

cheltenham@move.uk.net

move.uk.net/

**move**  
Property Sales & Lettings