



## Hackford Road, SW9

£475,000

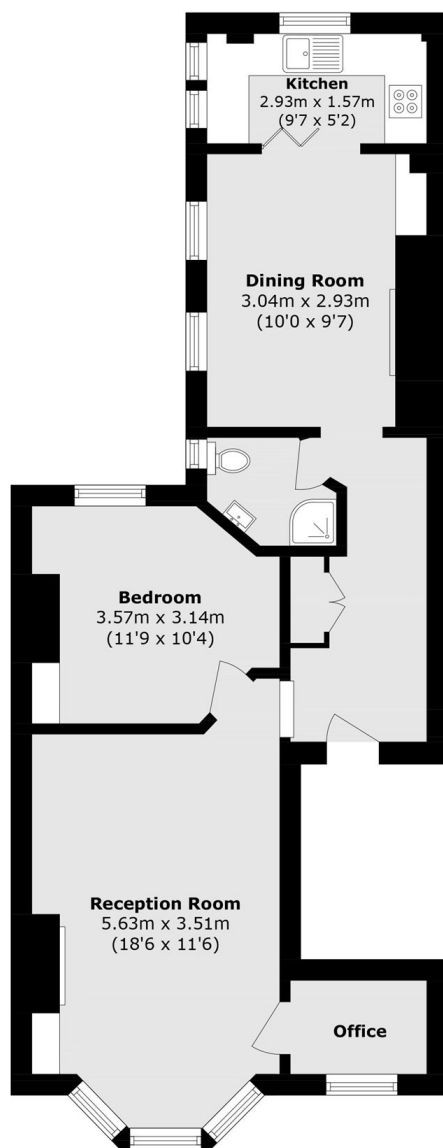
A beautifully presented one-bedroom first-floor Victorian conversion. This charming home boasts a bright bay-fronted reception room with elegant period features and an additional storage room ideal for a home office or study space. Flooded with natural light, the property also has a separate dining room with direct access into a bright kitchen. Additional benefits include a share of freehold and the property is offered to the market with no onward chain.

Hackford Road is a fantastic location, just a short walk from Oval cricket ground and Oval Station (Northern Line). There are plenty of bus routes close by and Vauxhall Station (Victoria Line and Overground Rail) is just a short walk away. There are several great local pubs, restaurants and cafes close by, as are the green spaces of Kennington Park.

### Features

- Separate dining and living room
- Share of Freehold
- Quiet/ Convenient Location
- First Floor
- Separate Kitchen
- Chain free

# Hackford Road, London, SW9



Total area (approx.): 59.6 sq. m (641.5 sq. ft)