



Colton Street, Leicester, LE1 1QA

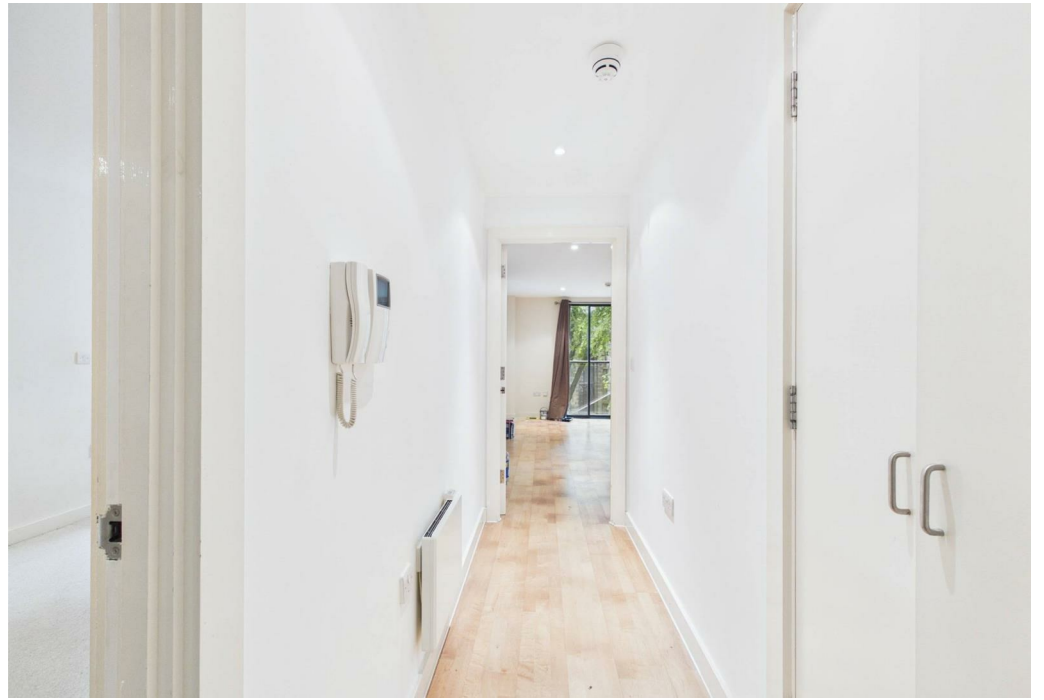
**SHELDON
BOSLEY
KNIGHT** LAND AND
PROPERTY
PROFESSIONALS

Property Description

*** DEPOSIT ALTERNATIVE AVAILABLE ***

AVAILABLE 14TH JULY *** A spacious second floor apartment in the popular Zenith Building, giving excellent access to Leicester city centre and the mainline railway station. The apartment is accessed via communal entrance hallway and access to the second floor via lift and stairs. The apartment benefits from a secure video entry system, electric heating and double glazing. The accommodation in brief comprises private entrance hallway with wood effect laminate flooring and storage cupboard, open plan living/dining area with wood effect laminate flooring and Juliet balcony, fitted kitchen with a range of dark wood effect shaker style wall cupboards, base units and drawers, charcoal grey fleck laminate work surfaces, inset single drainer stainless steel sink with chrome mixer tap over, integrated appliances including upright fridge freezer, Electrolux stainless steel four ring electric hob, electric oven, stainless steel chimney extractor, dishwasher and washer dryer, double bedroom with built-in mirror fronted wardrobes and bathroom with ceramic floor tiles, heated towel rail and three piece white suite comprising close coupled WC, wall mounted wash hand basin and side panel bath with thermostatic shower over and glass shower screen. There is an allocated car parking space within the under-croft car park. The property is offered UNFURNISHED. Leicester City Council Tax Band B. Energy Rating D.







Key Features

- AVAILABLE MAY
- DEPOSIT ALTERNATIVE AVAILABLE
- Leicester City Centre
- 1 Bedroom
- Apartment
- Unfurnished
- Allocated Car Parking
- Juliet Balcony
- Leicester City Council Tax Band B
- Energy Rating D

£900 PCM