



## Wimbledon Park Side, SW19

£449,950

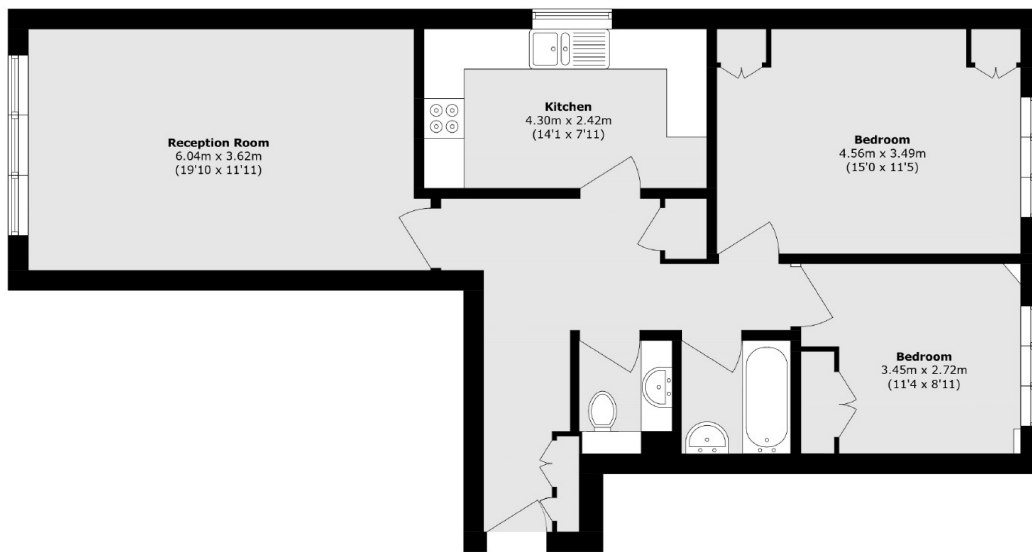
A 861sqft, two bedroom, ground floor flat. This property offers a bright reception space with a semi open-plan kitchen. There are two double bedrooms, both with ample room for wardrobes and a modern bathroom. The property also benefits from well-maintained westerly facing communal gardens.

Spencer house is situated on Wimbledon Park Side. The property is well connected, with excellent transport links nearby. Southfields, East Putney, and Wimbledon Park Underground stations (all on the District Line) offer easy access across London. A bus stop directly outside the property provides direct routes to Putney, Wimbledon, and Southfields. For drivers, the A3 is just a 13-minute drive away, offering a direct route into Central London.

### Features

- Chain Free
- 861 sqft
- Two Double bedrooms
- Ample storage throughout
- Communal gardens
- Good Transport Links

# Wimbledon Park Side, London, SW19



Total area (approx.): 77.8 sq. m (837.4 sq. ft)