



**Lindsay Street, Kettering, NN16 8RG**

**Kettering**

**£1,000 pcm**

**Deposit:** £1,000

**Furnishing:** Unfurnished

### **Victorian Charm Meets Modern Living**

Discover this beautifully presented two-bedroom end-terrace property, perfectly blending period features with contemporary comforts, located within Kettering town centre. This home offers excellent access to local amenities and transport links, making it an ideal choice for convenient living.

Step inside to an inviting entrance hallway, where the elegant Victorian flooring immediately captures attention, setting a stylish tone. The ground floor boasts an impressive open-plan lounge and dining room, providing a spacious and versatile area for both relaxation and entertaining. The dining room further benefits from a practical pantry room, adding to the home's functionality.

The modern fitted kitchen is designed for efficiency and style, complemented by a dedicated utility area, making daily chores a breeze.

Upstairs, you will find two spacious bedrooms, offering comfortable and private retreats. These are served by a contemporary family bathroom with a bath and separate shower, designed with modern fittings and finishes.

Externally, the property truly shines with its larger modern-style garden, providing ample outdoor space for enjoyment and recreation. A fantastic feature of the garden is the spacious workshop, perfect for hobbies or extra storage, alongside the convenience of an outside toilet. This attractive home is well-suited to those seeking a blend of historical character and modern amenities in a popular and accessible location.

**Available Now!**

EPC rating E

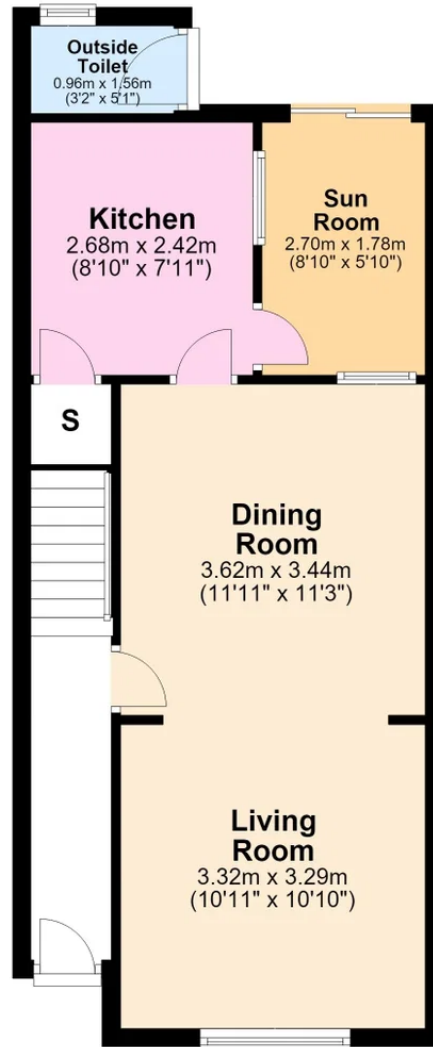
Council Tax band - A





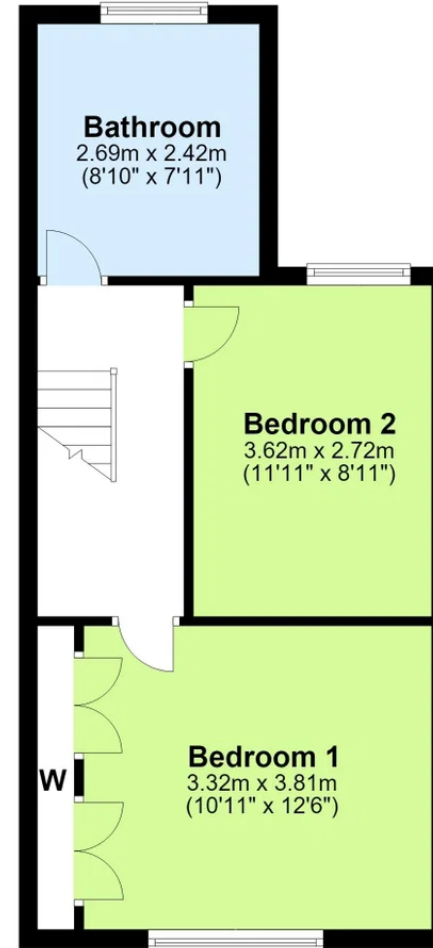
## Ground Floor

Approx. 43.6 sq. metres (468.8 sq. feet)



## First Floor

Approx. 37.3 sq. metres (401.0 sq. feet)



Total area: approx. 80.8 sq. metres (869.8 sq. feet)



Henderson Connellan Kettering office 01536 417888 [ketteringsales@hendersonconnellan.co.uk](mailto:ketteringsales@hendersonconnellan.co.uk)

Disclaimer: These particulars do not form part of any offer or contract and should not be relied upon as statements or representations of fact. Any areas, measurements of distances are approximate. The text, photographs and plans are for guidance only and are not necessarily comprehensive.

