



## DEALS GATEWAY, SE13

£2,450 per month

Modern apartment  
Two bedrooms  
Two bathrooms  
Private balcony  
Allocated parking space  
Energy rating: c

@marshandparsons  
marshandparsons.co.uk

MARSH &  
PARSONS

# ABOUT THE PROPERTY

A very well-presented third floor modern apartment set within a private development, which offers exclusive access to an on-site gym, lap swimming pool, 24-hour concierge and included in the rent are the water rates as well as an allocated secure parking space.

Deptford Bridge DLR station is located at the entrance of the development and Greenwich mainline station, Greenwich park and town centre is considered a short walk away. The recently opened Waitrose is also considered a short walk away.







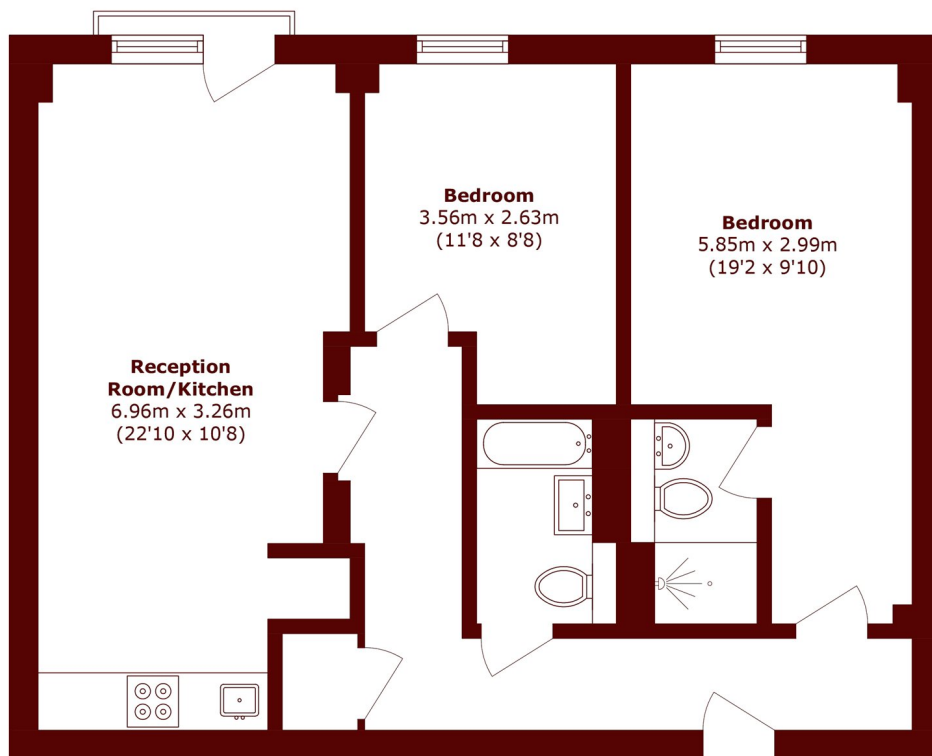
# FURTHER DETAILS

Interior comprises two double bedrooms with the master bedroom featuring an en suite, a further family bathroom suite, very spacious lounge/diner benefitting from a Juliette balcony and a fully fitted open plan kitchen boasting main appliances.

Further advantages include wood flooring, video entry phone system and is offered furnished.



# STEP INSIDE DEALS GATEWAY



Total area (approx.): 63.5 sq. m (683.5 sq. ft)

**Greenwich**  
020 8815 2230

Energy Rating: C We aim to make our particulars both accurate and reliable. However, they are not guaranteed; nor do they form part of an offer or contract. If you require clarification on any points then please contact us, especially if you're traveling some distance to view. Please note that appliances and heating systems have not been tested and therefore no warranties can be given as to their good working order

**MARSH &  
PARSONS**