

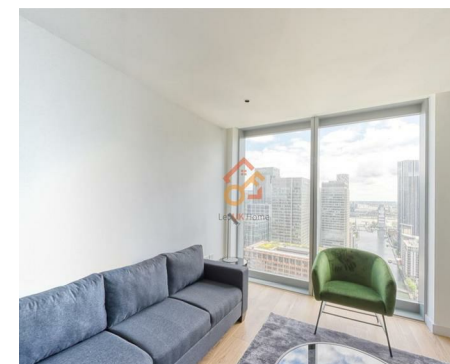
Let **UK** Home

1 Bedrooms

Flat

Located in London

£670,000



info@letukhome.co.uk

<https://www.letukhome.co.uk/>

01795 358 886



10 Marsh Wall London

E14 9GU



Let UK Home are excited to offer this spectacular one bedroom apartment in the heart of Landmark Pinnacle in Canary Wharf.

The flat comprises a spacious open kitchen with a stylishly attached dining area, a magnificent living room, one bright bedroom and one modern bathroom.

The apartment is luxuriously equipped. In addition to the private rooftop terrace platform on the 75th floor, it also provides a resident club, gym, yoga room, large children's playground, cinema, indoor simulated golf course and game room on the 27th and 56th floors.

Ideally located in Canary Wharf, this area is well connected by rail, road, river transport and tube. The Jubilee Line takes you straight to West London, and the DLR provides smooth access to the city centre. Heron Quays DLR, Canary Wharf Underground, Canary Wharf Elizabeth Line Station and Canary Wharf Pier are all a short walk away.

Nearby you will find prestigious universities and colleges including Imperial College London, LSE and UCL Stratford Campus, covering tech, drama, dance and more. Westminster University, King's College London and Central Saint Martins are just a short journey away.

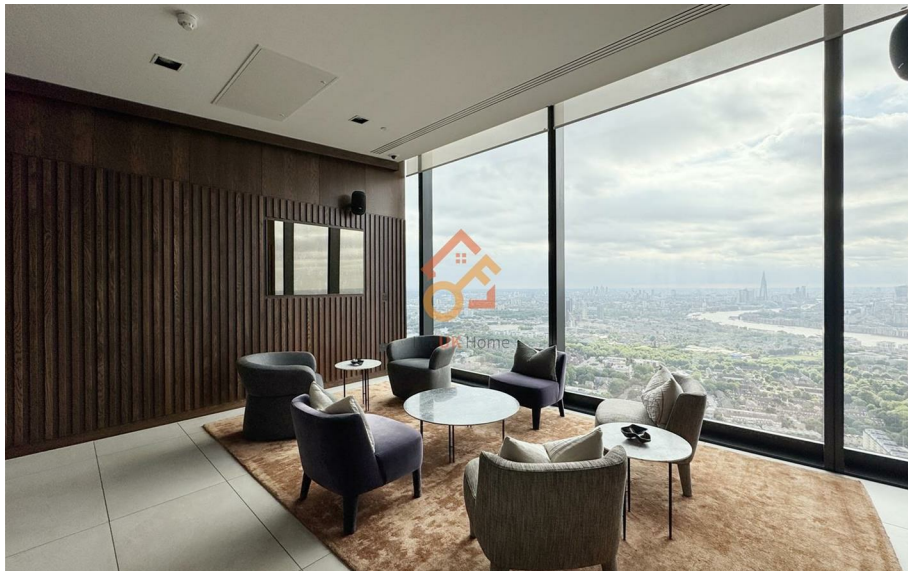
Additionally, Canary Wharf is extremely popular, with five large shopping malls, equipped with more than 300 restaurants, shops, cafes, bars, service agencies and entertainment facilities from all over the world, meeting all daily needs.

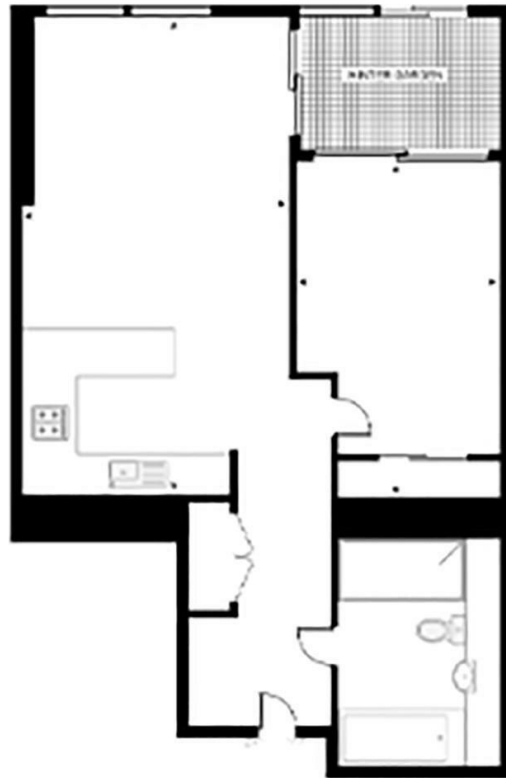
10 Marsh Wall London

£670,000 Leasehold

- 41st Floor
- Residents' Club
- Yoga Room
- Cinema & Game Room
- EPC Rating: B

- 24h Security
- Concierge Service
- The Gym
- Virtual Golf Suite





Total floor area 64 square metres



Let **UK** Home

3F 2 Eastbourne Terrace
 Paddington
 London
 W2 6LG

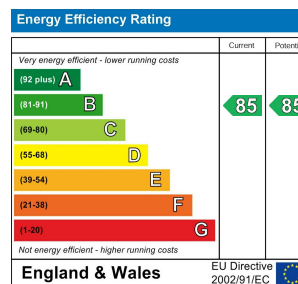
01795 358 886

info@letukhome.co.uk

Council Tax Band:

Local Authority:

Agents Note: Whilst every care has been taken to prepare these particulars, they are for guidance purposes only. All measurements are approximate and are for general guidance purposes only and whilst every care has been taken to ensure their accuracy, they should not be relied upon and potential buyers/tenants are advised to recheck the measurements.



<https://www.letukhome.co.uk/>