



**Mablethorpe Park, Mablethorpe LN12 2AP**

**welcome to**

## **Mablethorpe Park, Mablethorpe**

2 BEDROOM MODERN CHALET BUNGALOW LOCATED IN MABLETHORPE. THE PROPERTY IS ONLY A SHORT DISTANCE AWAY FROM AMENITIES AND PUBLIC TRANSPORT LINKS LEADING INTO SURROUNDING AREAS .. DONT MISS OUT, GIVE US A CALL TO ARRANGE A VIEWING ...

### **Entrance**

Entrance door leads into the Lounge area:

### **Lounge/Kitchen**

12' 6" x 15' 1" ( 3.81m x 4.60m )

Has a window to the front elevation and a window to the rear, 2 electric radiators. Modern wall, base and drawer units with worktop space over, integrated oven, hob, extractor and space for other appliances.

### **Bedroom One**

7' 3" x 8' 6" ( 2.21m x 2.59m )

Has a window.

### **Bedroom Two**

8' 8" x 7' 4" ( 2.64m x 2.24m )

Has a window.

### **Shower Room**

Modern shower room with corner shower, sink with vanity storage below, WC, tiled walls and an opaque window.

### **External**

Externally the property offers a parking space to the front. Decking area to the front as well as lawned space. The rear is low maintenance offering 2 sheds with electric.





***view this property online*** [williamhbrown.co.uk/Property/SKG109723](http://williamhbrown.co.uk/Property/SKG109723)



welcome to

## Mablethorpe Park, Mablethorpe

- 2 Bed Chalet Bungalow
- Parking for 1 car
- Modern Throughout
- Rear Garden
- Residential Site

Tenure: Leasehold EPC Rating: Awaiting

Council Tax Band: A Service Charge: 438.00

Ground Rent: 333.00

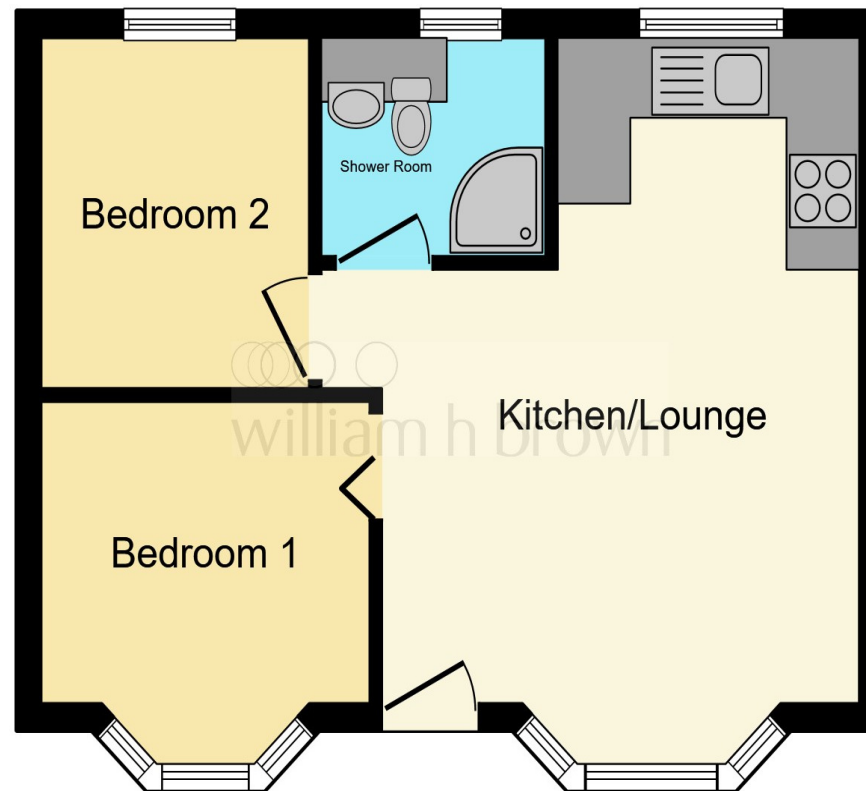
This is a Leasehold property with details as follows; Term of Lease 99 years from 20 Apr 2012.

Should you require further information please contact the branch. Please Note additional fees could be incurred for items such as Leasehold packs.

# £85,000

### directions to this property:

See Multi-map illustration



This floor plan is for illustrative purposes only. It is not drawn to scale. Any measurements, floor areas (including any total floor area), openings and orientation are approximate. No details are guaranteed, they cannot be relied upon for any purpose and they do not form part of any agreement. No liability is taken for any error, omission or misstatement. A party must rely upon its own inspection(s). Powered by [www.focalagent.com](http://www.focalagent.com)

view this property online [williamhbrown.co.uk/Property/SKG109723](http://williamhbrown.co.uk/Property/SKG109723)



Property Ref:  
SKG109723 - 0003

1. MONEY LAUNDERING REGULATIONS Intending purchasers will be asked to produce identification documentation at a later stage and we would ask for your co-operation in order that there is no delay in agreeing the sale. 2. These particulars do not constitute part or all of an offer or contract. 3. The measurements indicated are supplied for guidance only and as such must be considered incorrect. Potential buyers are advised to recheck measurements before committing to any expense. 4. We have not tested any apparatus, equipment, fixtures or services and it is in the buyers interest to check the working condition of any appliances. 5. Where an EPC, or a Home Report (Scotland only) is held for this property, it is available for inspection at the branch by appointment. If you require a printed version of a Home Report, you will need to pay a reasonable production charge reflecting printing and other costs. 6. We are not able to offer an opinion either written or verbal on the content of these reports and this must be obtained from your legal representative. 7. Whilst we take care in preparing these reports, a buyer should ensure that his/her legal representative confirms as soon as possible all matters relating to title including the extent and boundaries of the property and other important matters before exchange of contracts.

William H Brown is a trading name of Sequence (UK) Limited which is registered in England and Wales under company number 4268443, Registered Office is Cumbria House, 16-20 Hockliffe Street, Leighton Buzzard, Bedfordshire, LU7 1GN. VAT Registration Number is 500 2481 05.

  
william h brown



01754 768311



[Skegness@williamhbrown.co.uk](mailto:Skegness@williamhbrown.co.uk)



20 Roman Bank, SKEGNESS, Lincolnshire, PE25 2RU



[williamhbrown.co.uk](http://williamhbrown.co.uk)