



Townshend Terrace, TW9

£475,000

Located on the first floor, this larger-than-average flat offers bright and well-proportioned living space throughout, making it both comfortable and practical. A great opportunity, it would suit first-time buyers as well as investors looking for a buy-to-let investment.

Robinson Court enjoys a highly convenient and well-connected setting, located just 0.6 miles from the vibrant centre of Richmond, where an array of shops, restaurants, and amenities can be found. North Sheen station is a short 0.3-mile walk away, providing excellent transport links, while the property is also just 0.2 miles from Marshgate School, an Ofsted "Outstanding" rated school.

Features

- Two Double Bedrooms
- Spacious Reception Room
- Fitted Kitchen
- Modern Bathroom
- First Floor
- External Storage Shed



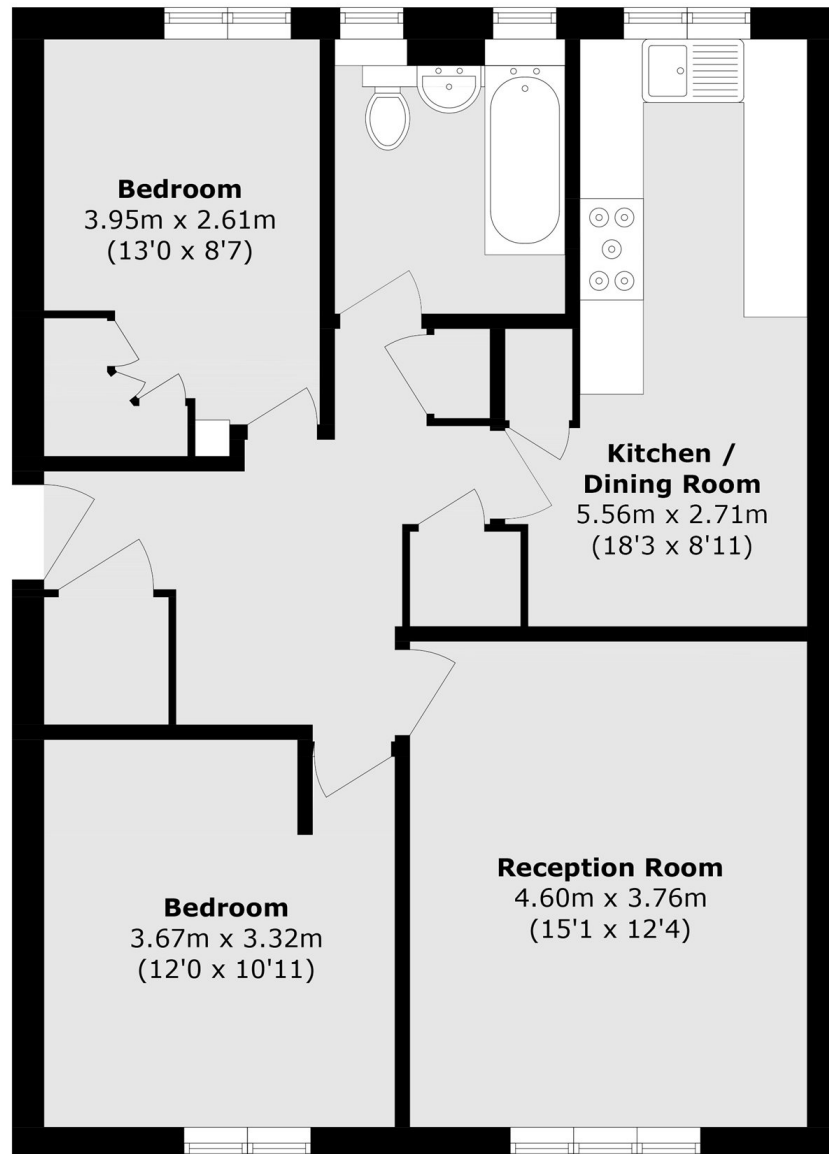
Townshend Terrace, TW9

Internally, the accommodation is well-proportioned and thoughtfully arranged, comprising two generous double bedrooms, a spacious reception room providing an excellent living and entertaining space, and a kitchen/dining room that is well-suited to both everyday living and hosting.

The property further benefits from a large bathroom, while double glazing is installed throughout, enhancing both comfort and energy efficiency and adding to the overall practicality of the home.



Townshend Terrace, Richmond, TW9



Total area (approx.): 74.3 sq. m (799.7 sq. ft)