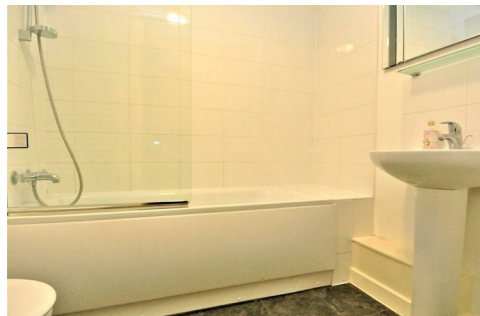




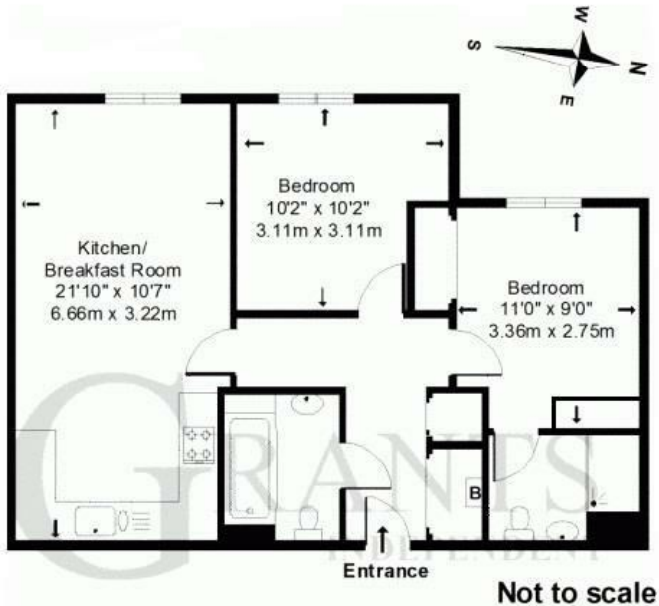
Harrow Close, Addlestone, KT15 2GH





Offered to the market with No Onward Chain and is this two DOUBLE Bedroom First Floor Apartment. Well presented and benefiting from gas central heating, an allocated parking space and long lease, this wonderful apartment has a fitted kitchen with integral appliances including fridge freezer, oven, hob and dishwasher and is open plan to the living room with large windows looking out over the playing fields in the distance. The main double bedroom has fitted wardrobes and an en-suite shower room, and there is also a family bathroom. The apartment sits in a modern development on the Addlestone & Chertsey borders, with Chertsey train station and town centre approximately 1 mile away whilst local amenities and schools are closer still. NB, Photos are pre-tenancy


Leasehold



**Approximate Gross Internal Floor Area: 58m sq (624 sq ft)**

Whilst every attempt has been made to ensure the accuracy of this floor plan, room sizes and measurements are approximate and accordingly should not be relied upon for carpets and furnishings.

These plans are for representation purposes only and no responsibility can be given for errors and omissions.

 Drawing Rooms



EPC Rating: 78 C

Grants Homes 155 Station Road, Addlestone, Surrey, KT15 2AT  
T: 01932 858885 E: [addlestone@grantshomes.co.uk](mailto:addlestone@grantshomes.co.uk)

