



Price

£400,000

Leasehold

2x  1x  1x 

**Dahlia Court, Oatland
Rise, Walthamstow, E17**

 **DOUGLAS
ALLEN**
Helping you move forwards



Main features

- Top floor apartment
- Chain-free
- Very modern throughout
- Double bedrooms
- Short walk to amenities of Walthamstow
- Modern and open-plan living area

Accommodation

THIRD FLOOR

Lounge/Kitchen/Diner: 29'1" x 13'1" (8.87m x 3.99m)

Bedroom 1: 13'6" x 12'2" (4.12m x 3.71m)

Bedroom 2: 16'1" x 10'0" (4.91m x 3.05m)

Bathroom

OUTSIDE

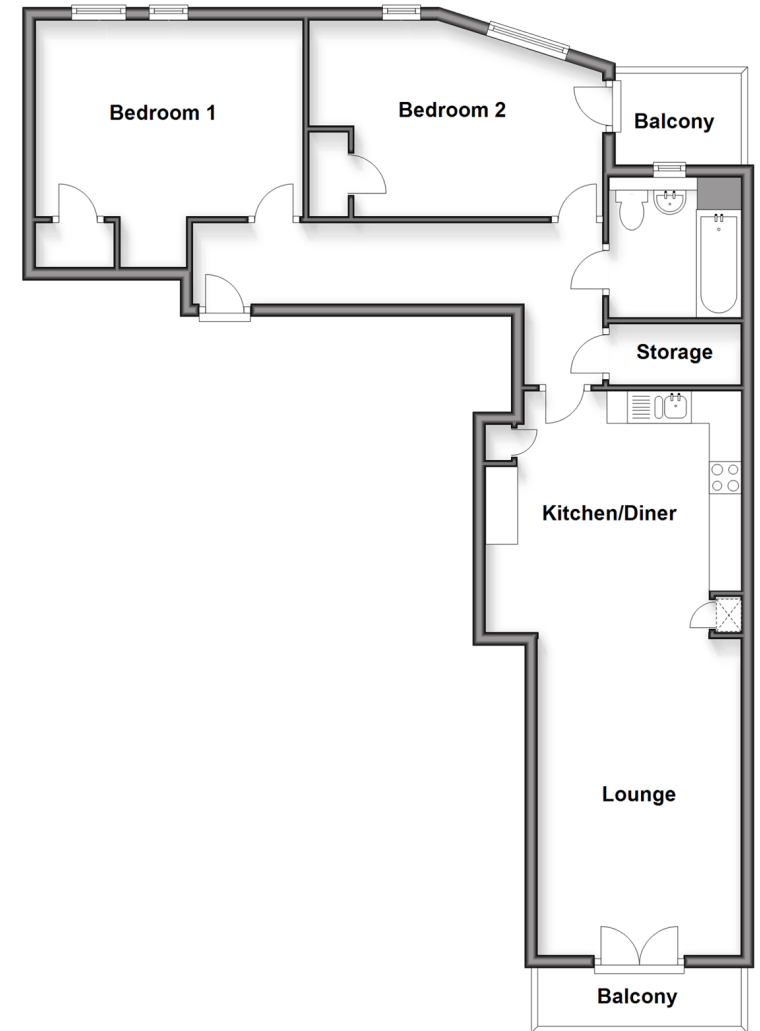
Balcony off Lounge

Balcony off Bedroom 2

Allocated Parking Space

Communal Gardens

Third Floor
Approx. 76.1 sq. metres (818.7 sq. feet)



Call Walthamstow - 020 8509 0092 ■ douglasallen.co.uk

- A private rental licensing scheme applies to some properties in this area, please check with the Local Authority before proceeding
- Legal advice should be taken to verify fixtures/fittings, planning, alterations and/or lease details
- Appliances & services are untested, dimensions are approximate and floor plans are not to scale



53117757/20260214/KS/SC