

## Westover Road, Callington, PL17

Guide Price £440,000

4 2 2



A four-bedroom detached bungalow, located on the highly sought-after Westover Road and enjoying far-reaching countryside views. This well-presented home offers spacious accommodation, a private driveway, a garage, and a generous west-facing garden.

Callington is a charming Cornish town located in a prime South East Cornwall position, just 15 miles from Plymouth city centre. The town offers a wide range of amenities including a health centre, sports centre/gym, supermarkets, a church, and both primary and secondary schools.

## Key Features

- TO ARRANGE A VIEWING PLEASE QUOTE BL0650
- Four Bedrooms (1 Ensuite)
- Generous Plot
- Well-Presented Throughout
- West-Facing Garden
- Detached Bungalow
- Spacious Accommodation
- Private Driveway & Garage
- Countryside Views
- Freehold

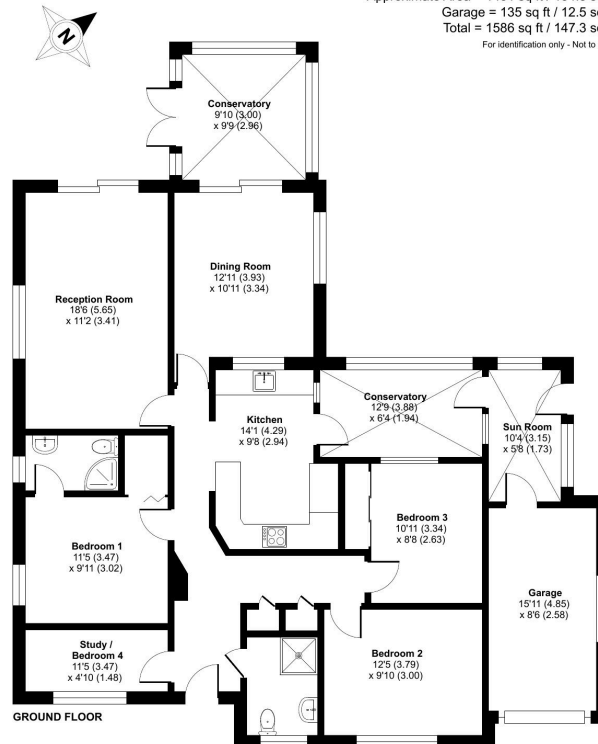
### Westover Road, Callington, PL17

Approximate Area = 1451 sq ft / 134.8 sq m

Garage = 135 sq ft / 12.5 sq m

Total = 1586 sq ft / 147.3 sq m

For identification only - Not to scale



ⓘ Floor plan produced in accordance with RICS Property Measurement Standards incorporating International Property Measurement Standards (IPMS Residential). © nichecom 2026. Produced for eXp Agent (DD). REF: 1479111