









Smoker Hill Cottage

Chester Road, Plumley, Knutsford

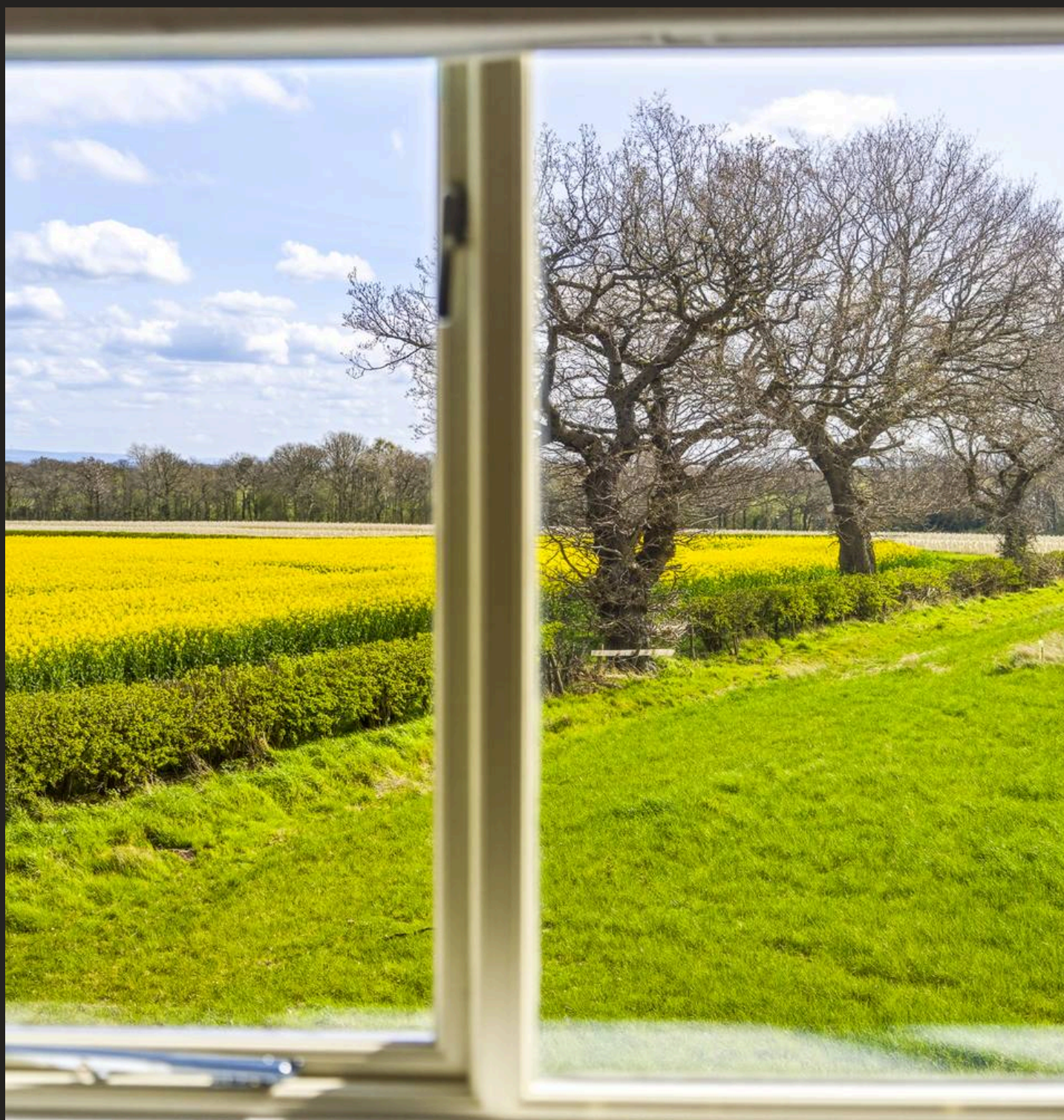
A stunning extended 3-bed detached cottage near Knutsford. Period features, modern upgrades, private gated setting, double garage, garden room, wrap-around gardens, and no onward chain.

Council Tax band: C

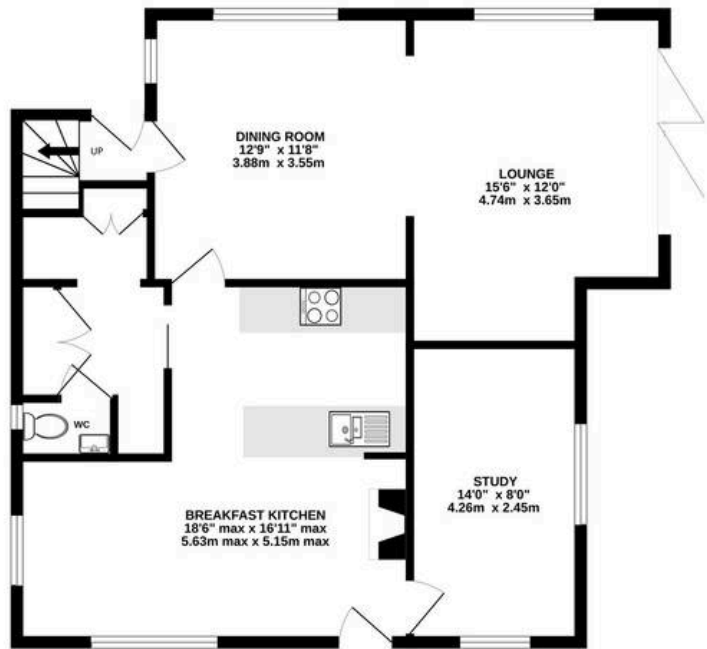
Tenure: Freehold

EPC Energy Efficiency Rating: D

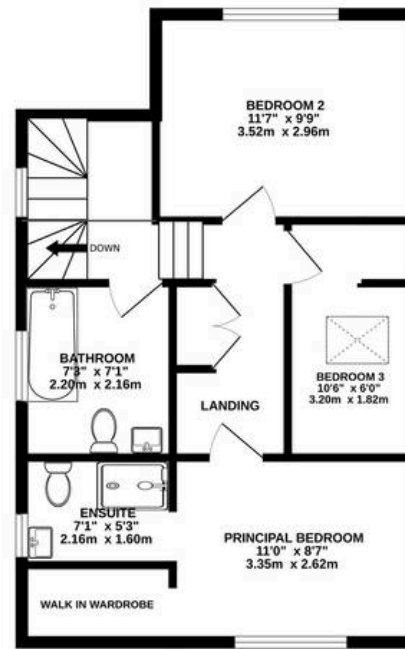
- No onward chain and located in a peaceful rural setting close to Knutsford and transport links
- Beautifully extended and fully refurbished detached cottage dating back to 1853
- Spacious, modern layout with three bedrooms and two bathrooms
- High-spec renovation including underfloor heating and bespoke finishes throughout
- Private, gated setting accessed via a secluded lane with parking for 5+ vehicles
- Stunning wrap-around gardens with south-facing BBQ and entertaining area
- Versatile outbuildings including double garage and garden room with shower/WC
- Character features including restored chimney, double-sided fireplace and log burner



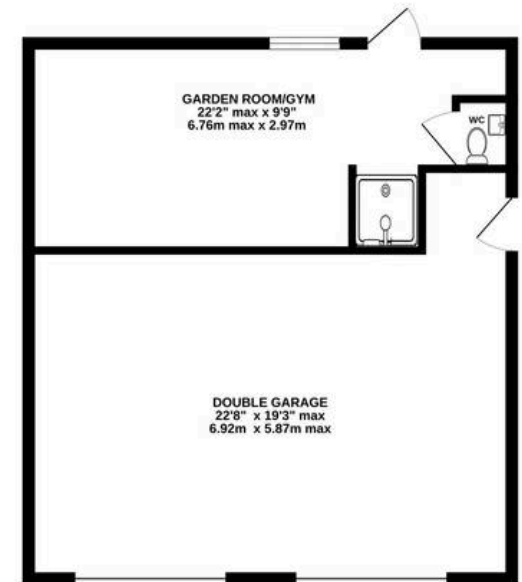
GROUND FLOOR
796 sq.ft. (73.9 sq.m.) approx.



1ST FLOOR
515 sq.ft. (47.9 sq.m.) approx.



571 sq.ft. (53.0 sq.m.) approx.



TOTAL FLOOR AREA : 1882 sq.ft. (174.9 sq.m.) approx.

Whilst every attempt has been made to ensure the accuracy of the floorplan contained here, measurements of doors, windows, rooms and any other items are approximate and no responsibility is taken for any error, omission or mis-statement. This plan is for illustrative purposes only and should be used as such by any prospective purchaser. The services, systems and appliances shown have not been tested and no guarantee as to their operability or efficiency can be given.

Made with Metropix ©2026







Stuart Rushton & Company

Stuart Rushton & Co, 35 King Street – WA16 6DW

01565 757000

enquiries@srushton.co.uk

www.srushton.co.uk



**Stuart
Rushton**
& COMPANY

We are not authorised to make or give any representations or warranties in relation to the property either here or elsewhere. We assume no responsibility for any statement that may be made in these particulars, and they do not form part of any offer or contract and must not be relied upon as statements or representation of fact. Any areas, measurements or distances are approximate. The text, photographs and plans are for guidance only. Importantly, it should not be assumed that the property has all necessary planning, building regulations or other consents and we have not tested any services, equipment or facilities. Purchasers must satisfy themselves by inspection or otherwise.