

for sale

£135,000



## The Panorama Park Street Ashford TN24 8DF

**CASH BUYERS ONLY** .....This stylish two-bedroom leasehold apartment at The Panorama offers a superb investment opportunity in the heart of Ashford town centre.



# The Panorama Park Street Ashford TN24 8DF

## Entrance Hall

## Lounge/Diner/Kitchen

23' 2" x 14' 7" ( 7.06m x 4.45m )

## Bedroom 1

15' 5" x 8' 8" ( 4.70m x 2.64m )

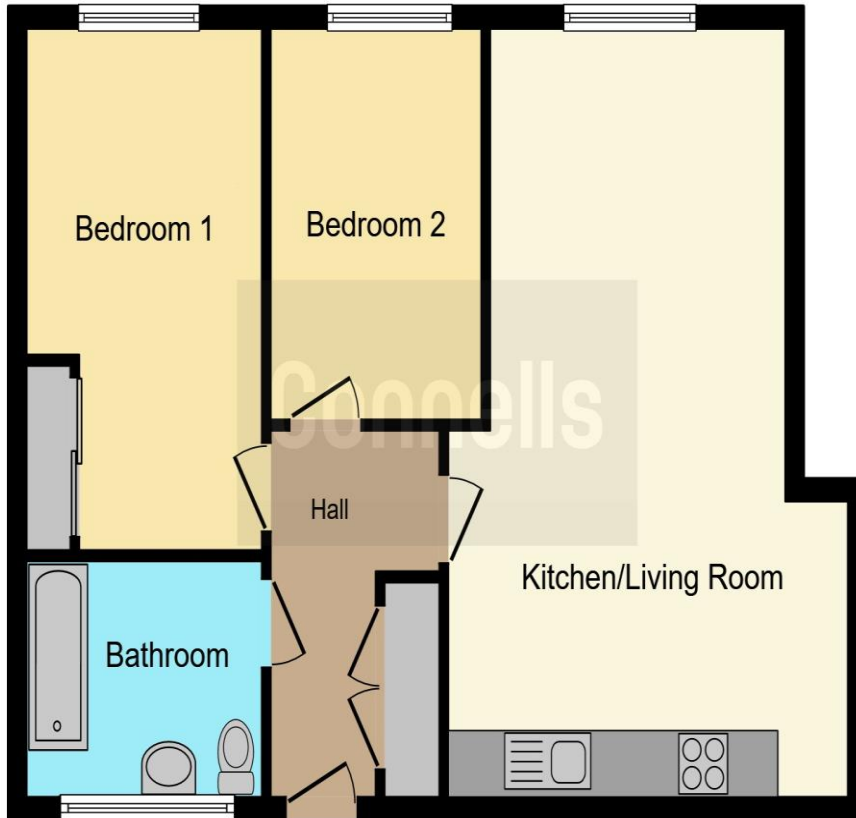
## Bedroom 2

11' 7" x 7' 4" ( 3.53m x 2.24m )

## Bathroom







This floor plan is for illustrative purposes only. It is not drawn to scale. Any measurements, floor areas (including any total floor area), openings and orientation are approximate. No details are guaranteed, they cannot be relied upon for any purpose and they do not form part of any agreement. No liability is taken for any error, omission or misstatement. A party must rely upon its own inspection(s). Powered by [www.focalagent.com](http://www.focalagent.com)

To view this property please contact Connells on

**T 01233 502020**  
**E [parkfarm@connells.co.uk](mailto:parkfarm@connells.co.uk)**

Unit 3 Moatfield Meadow Kingsnorth  
 ASHFORD TN23 3LU

Property Ref: PFM406156 - 0012

Tenure:Leasehold EPC Rating: C

Council Tax Band: C Service Charge: 1772.74

Ground Rent: 250.00

**view this property online [connells.co.uk/Property/PFM406156](http://connells.co.uk/Property/PFM406156)**

This is a Leasehold property with details as follows; Term of Lease 130 years from 24 Jun 2015. Should you require further information please contact the branch. Please Note additional fees could be incurred for items such as Leasehold packs.

1. MONEY LAUNDERING REGULATIONS Intending purchasers will be asked to produce identification documentation at a later stage and we would ask for your co-operation in order that there will be no delay in agreeing the sale. 2. These particulars do not constitute part or all of an offer or contract. 3. The measurements indicated are supplied for guidance only and as such must be considered incorrect. Potential buyers are advised to recheck measurements before committing to any expense. 4. We have not tested any apparatus, equipment, fixtures, fittings or services and it is in the buyers interest to check the working condition of any appliances.

Connells Residential is registered in England and Wales under company number 1489613, Registered Office is Cumbria House, 16-20 Hockliffe Street, Leighton Buzzard, Bedfordshire, LU7 1GN. VAT Registration Number is 500 2481 05.

