



**16 Upper Mill, Purton**  
Swindon

**£350,000**



## 16 Upper Mill

Purton, Swindon

Modern three-bedroom home on Ridgeway Farm, West Swindon. Three floors, updated kitchen, master suite, garden, garage, and parking. Close to schools, amenities, and transport links.

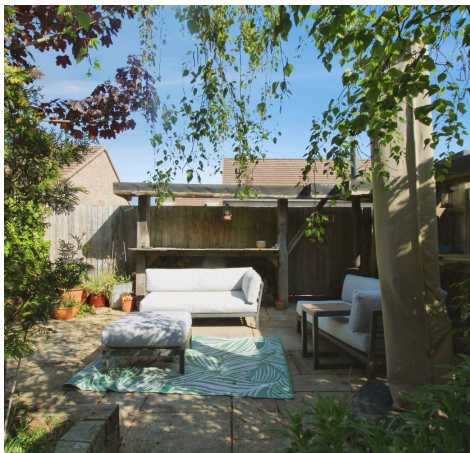
Council Tax band: D

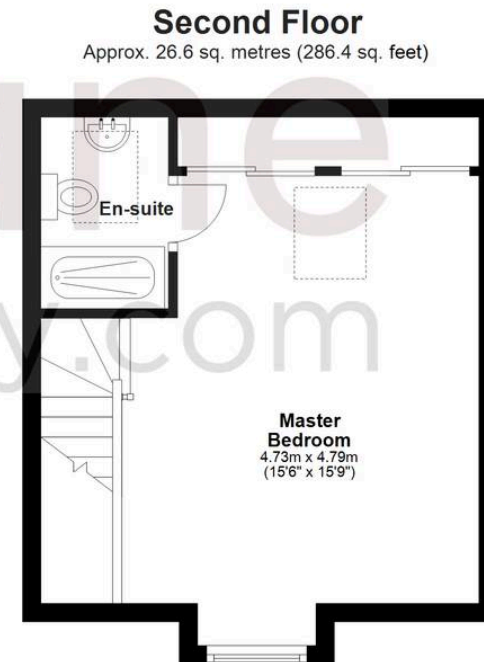
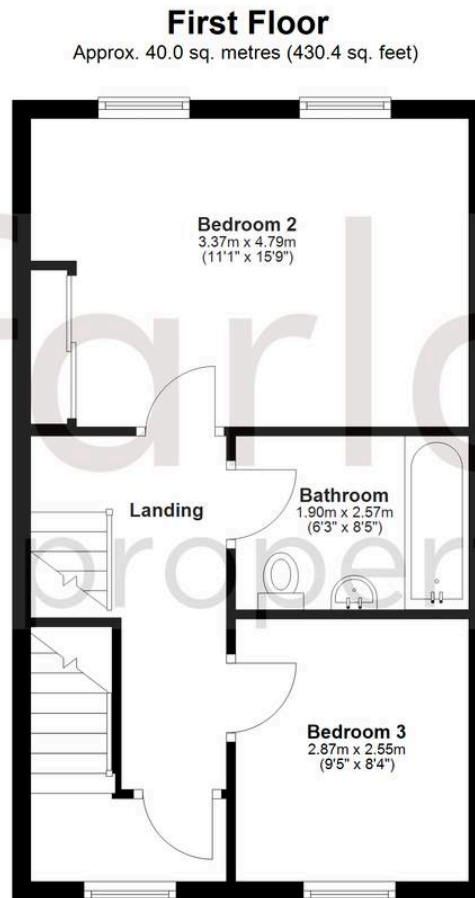
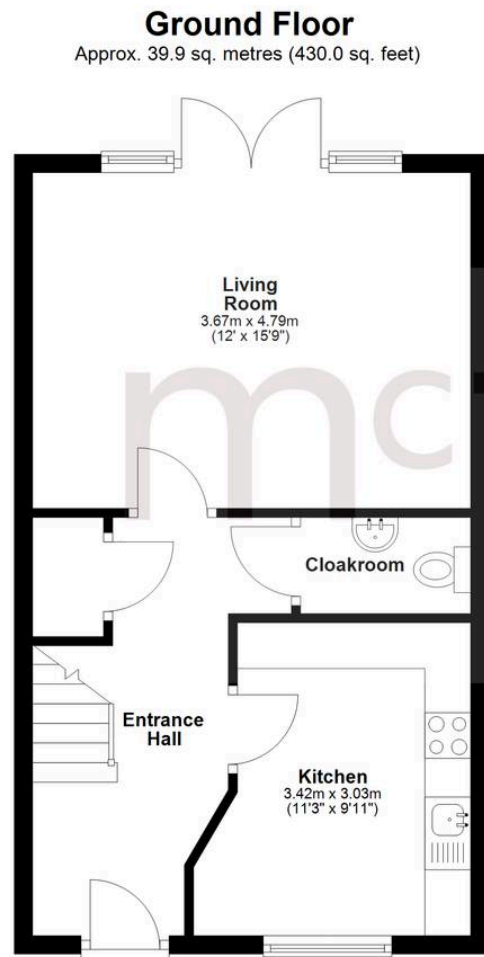
Tenure: Freehold

EPC Energy Efficiency Rating: B

EPC Environmental Impact Rating: B

- THREE Bedrooms
- Driveway + Garage
- Landscaped Rear Garden
- Sought After Modern Development
- Updated and Improved Kitchen
- Ideally Positioned for Ridgeway Farm School (Adjacent)
- Flexible Accommodation over Three Floors





Total area: approx. 106.5 sq. metres (1146.8 sq. feet)

## McFarlane Sales & Lettings

North Swindon, Redhouse Village Centre, Swindon - SN25 2FW

01793 296600 • [swindon@mcfarlaneproperty.com](mailto:swindon@mcfarlaneproperty.com) • [www.mcfarlaneproperty.com/](http://www.mcfarlaneproperty.com/)