



 Steven Oates

Peasmead, Buntingford  
**£2,000 pcm**

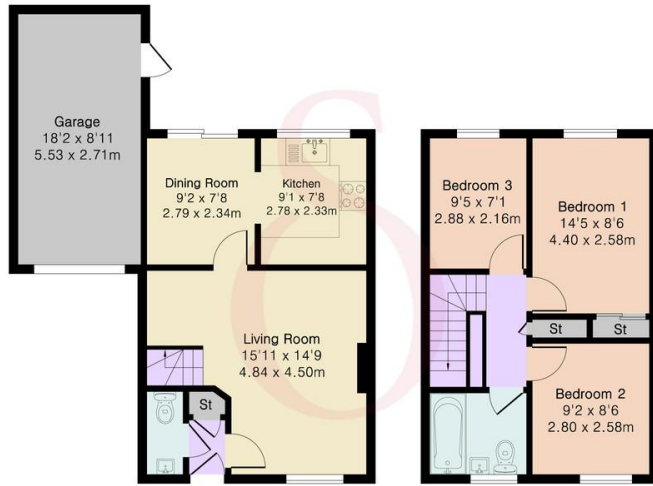
Steven Oates are pleased to offer for rent this three-bedroom family home situated within a popular residential cul-de-sac in the sought-after market town of Buntingford. The ground floor comprises a bright and welcoming entrance hall leading through to a spacious living room. To the rear, a fitted kitchen/dining area provides ample workspace and storage, with space for dining and access out to the garden. Upstairs, the property offers three good-sized bedrooms along with a modern family bathroom. Externally, the home benefits from a private rear garden, single garage and off-street parking. Further features include double glazing and gas central heating, contributing to a comfortable and energy-efficient home. Conveniently positioned within easy reach of Buntingford High Street, the property enjoys access to a range of local shops, amenities, schooling and transport links. Available mid-May and offered unfurnished





**Approximate Gross Internal Area 774 sq ft - 72 sq m  
(Excluding Garage)**

Ground Floor Area 387 sq ft – 36 sq m  
 First Floor Area 387 sq ft – 36 sq m  
 Garage Area 161 sq ft – 15 sq m



Ground Floor

First Floor

Score	Energy rating	Current	Potential
92+	A		
81-91	B		86 B
69-80	C	70 C	
55-68	D		
39-54	E		
21-38	F		
1-20	G		



Floor plan produced in accordance with RICS Property Measurement 2nd Edition. Although Pink Plan Ltd ensures the highest level of accuracy, measurements of doors, windows and rooms are approximate and no responsibility is taken for error, omission or misstatement. These plans are for representational purposes only and no guarantee is given on the total square footage of the property within this plan. The figure icon is for initial guidance only and should not be relied on as a basis of valuation.





Whilst we endeavour to make our sales particulars fair, accurate and reliable, they are only intended as a general guide to the property. Measurements and distances are approximate. These particulars do not form part of any offer or contract. If there are important matters that are likely to affect your decision to buy, please contact us before viewing the property. Please note that we have not tested the services, equipment or appliances in this property, accordingly, we advise prospective buyers to commission their own survey or service reports before finalising any offer to purchase.