



Churchill Court
2 Wadham Mews, SW14





A well-presented first-floor apartment with lift access, situated within a modern development just moments from the Thames Path.

This attractive home benefits from a large private balcony, along with the rare advantage of two bathrooms. The principal bedroom features stylish wooden panelling, a built-in wardrobe, and a contemporary ensuite shower room. The second bedroom has previously comfortably accommodated a double bed, while also offering flexibility as a home office and it is currently used as nursery room, it also features a built-in wardrobe.

At the heart of the apartment is a bright, dual-aspect open-plan reception room and kitchen, creating an excellent space for both relaxing and entertaining. The high-specification kitchen is fitted with granite worktops and includes a boiling water tap with integrated water filtration.

The family bathroom features a bath, and the hallway has a large storage cupboard.

Further benefits include an allocated parking space conveniently located closest to the building entrance, as well as a secure internal bicycle store.

The development enjoys an enviable position close to the River Thames, offering scenic riverside walks, running routes, and outdoor leisure opportunities right on the doorstep.

- Balcony
- Two Bathrooms
- High Spec Finish
- Car Parking Space
- Lift
- Secure Bike Store

Asking Price £530,000

Tenure: Leasehold 110 years 6 months

Service Charge: £2500 Includes gas bill, maintenance and lighting etc of all communal areas and garden

Ground Rent: £500

Local Authority: London Borough of Richmond upon Thames

Council Tax Band: E

Chestertons East Sheen Sales

254A Upper Richmond Road West

East Sheen

London

SW14 8AG

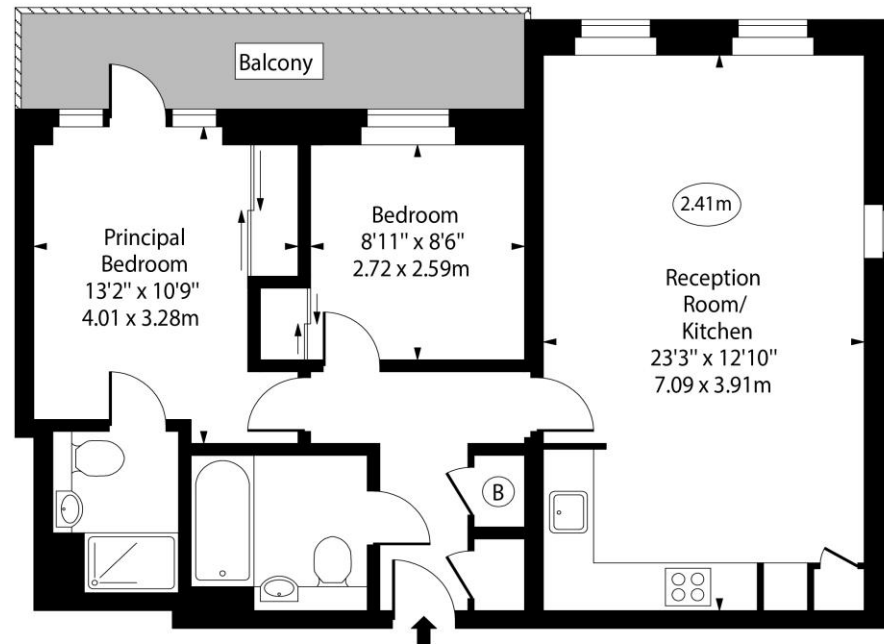
sheen@chestertons.co.uk

020 8104 0580

Churchill Court,
Wadham Mews,
Mortlake, SW14



○ - Ceiling Height



First Floor

Approx Gross Internal Area 680 Sq Ft - 63.17 Sq M

Every attempt has been made to ensure the accuracy of the floor plan shown. However, all measurements, fixtures, fittings, and data shown are approximate interpretations and for illustrative purposes only. Measured according to the RICS. Not To Scale.

www.goldlens.co.uk

Ref. No. 032082E

Chesterton UK Services Limited trading as Chestertons for themselves and for the vendor of this property whose agents they are, give notice that (i) these particulars do not constitute any part of an offer or contract, (ii) all statements contained within these particulars are made without responsibility on the part of Chestertons or the vendor, (iii) whilst made in good faith, none of the statements contained within these particulars are to be relied upon as a statement or representation of fact, (iv) any intending purchasers must satisfy themselves by inspection or otherwise as to the correctness of each of the statements contained within these particulars, (v) the vendor does not make or give either Chestertons or any person in their employment any authority to make or give representation or warranty whatsoever in relation to this property. Wide angle lenses may be used. ©Copyright Chestertons | Chesterton UK Services Limited | Registered Office 5th Floor, The Lantern, 75 Hampstead Road, London, NW1 2PL Registered Company Number 05334580.



This paper is
100% recyclable