



Bekonscot Court, Giffard Park, Milton Keynes, MK14 5QS

welcome to

Bekonscot Court, Giffard Park, Milton Keynes

Situated on this popular development and being CLOSE TO LOCAL AMENITIES is this MID-TERRACE bungalow offering a kitchen which opens onto a patio area, lounge, DOUBLE bedroom with built-in wardrobe and bathroom with four-piece suite. Patio area, communal gardens, and parking. NO ONWARD CHAIN

Entrance Hall

Door to the front, storage cupboard, airing cupboard and access, via a ladder, to the loft. Doors to the living room, kitchen, bedroom and bathroom.

Lounge

13' 1" x 12' 5" (3.99m x 3.78m)

Feature electric fireplace, radiator and double-glazed windows to the rear and side. Double-glazed door leading out to the communal gardens.

Kitchen

11' 2" x 9' 3" (3.40m x 2.82m)

Fitted with a mix of wall and base units with work surface over, sink with drainer, electric double oven and an electric hob with extractor fan over. Space for a washing machine and a fridge/freezer. Radiator and space for a small dining table and chairs. Double-glazed door leading out to a patio area.

Bedroom

12' 2" x 8' 9" (3.71m x 2.67m)

Built-in wardrobes and drawers, built-in storage cupboard, radiator and double-glazed window to the rear.

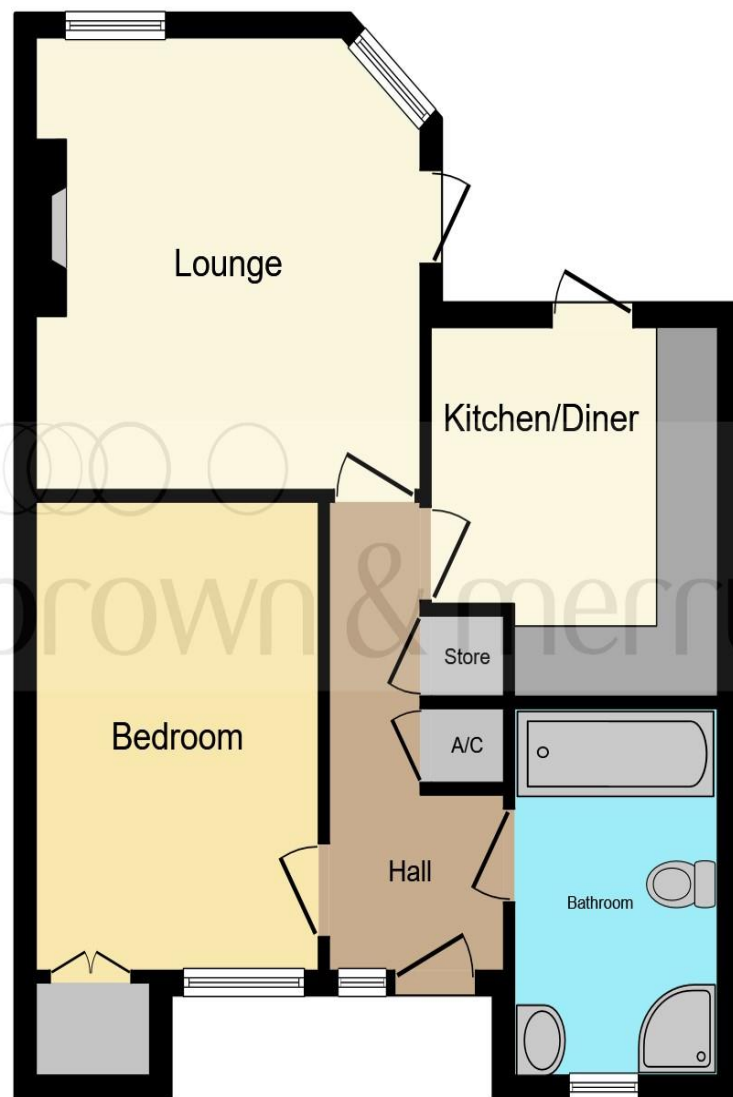
Bathroom

Fully tiled with a wash hand basin with storage cupboard under, low-level WC with integral flush, bath with handheld shower attachment and a corner shower cubicle. Radiator and double-glazed obscured window to the front.

Outside Gardens

A paved patio area and communal gardens.

Parking



This floor plan is for illustrative purposes only. It is not drawn to scale. Any measurements, floor areas (including any total floor area), openings and orientation are approximate. No details are guaranteed, they cannot be relied upon for any purpose and they do not form part of any agreement. No liability is taken for any error, omission or misstatement. A party must rely upon its own inspection(s). Powered by www.focalagent.com



welcome to

Bekonscot Court,

Giffard Park, Milton Keynes

- RETIREMENT DEVELOPMENT - OVER 55'S
- COMMUNAL GARDENS & PARKING
- NO UPPER CHAIN
- PATIO AREA
- CLOSE TO AMENITIES & GRAND UNION CANAL

Tenure: Freehold EPC Rating: D

Council Tax Band: B

£190,000



view this property online [brownandmerry.co.uk/Property/NPL107866](https://www.brownandmerry.co.uk/Property/NPL107866)



Property Ref:
NPL107866 - 0009

1. MONEY LAUNDERING REGULATIONS Intending purchasers will be asked to produce identification documentation at a later stage and we would ask for your co-operation in order that there is no delay in agreeing the sale. 2. These particulars do not constitute part or all of an offer or contract. 3. The measurements indicated are supplied for guidance only and as such must be considered incorrect. Potential buyers are advised to recheck measurements before committing to any expense. 4. We have not tested any apparatus, equipment, fixtures or services and it is in the buyers interest to check the working condition of any appliances. 5. Where an EPC, or a Home Report (Scotland only) is held for this property, it is available for inspection at the branch by appointment. If you require a printed version of a Home Report, you will need to pay a reasonable production charge reflecting printing and other costs. 6. We are not able to offer an opinion either written or verbal on the content of these reports and this must be obtained from your legal representative. 7. Whilst we take care in preparing these reports, a buyer should ensure that his/her legal representative confirms as soon as possible all matters relating to title including the extent and boundaries of the property and other important matters before exchange of contracts.

Brown & Merry is a trading name of Sequence (UK) Limited which is registered in England and Wales under company number 4268443, Registered Office is Cumbria House, 16-20 Hockliffe Street, Leighton Buzzard, Bedfordshire, LU7 1GN. VAT Registration Number is 500 2481 05.

brown & merry



01908 611242



newportpagnell@brownandmerry.co.uk



74A High Street, Newport Pagnell, MILTON
KEYNES, Buckinghamshire, MK16 8AQ



[brownandmerry.co.uk](https://www.brownandmerry.co.uk)