



Flat 5, 1 Peascod Place, Windsor, SL4 1AF
£265,000

 HORLER

Flat 5, 1 Peascod Place, Windsor, SL4 1AF

*** 0.2 MILES FROM WINDSOR CASTLE ***

Charming first-floor studio apartment in the heart of Windsor, located on Peascod Place. The property features a separate bedroom area, a contemporary fitted kitchen, and a modern bathroom. Ideally situated in the town centre, it offers easy access to shops, cafés, restaurants, schools, and excellent transport links, making it ideal for professionals or small households seeking convenient modern living.



Property Summary

Nestled in the heart of Windsor, this charming first-floor studio apartment offers a delightful blend of modern living and convenience. Located on Peascod Place, the property features a separate bedroom area, providing a comfortable and private space for rest and relaxation.

The apartment boasts a contemporary fitted kitchen, perfect for those who enjoy cooking and entertaining. The modern bathroom complements the stylish design, ensuring that all your needs are met in this well-appointed home.

One of the standout features of this property is its prime town centre location. Residents will benefit from easy access to a variety of local amenities, including shops, cafes, and restaurants, all just a stone's throw away. Additionally, the proximity to schools and transport links makes this apartment an ideal choice for both families and professionals alike.

Whether you are looking for a vibrant lifestyle or a peaceful retreat, this studio apartment in Windsor is sure to impress. With its modern features and excellent location, it presents a wonderful opportunity for those seeking a new home in this historic town.

General Information

Lease remaining: Approx. 237 years

Service charge: Approx. £1,737.52 per year

Ground rent: Approx. £388.75

Legal Note

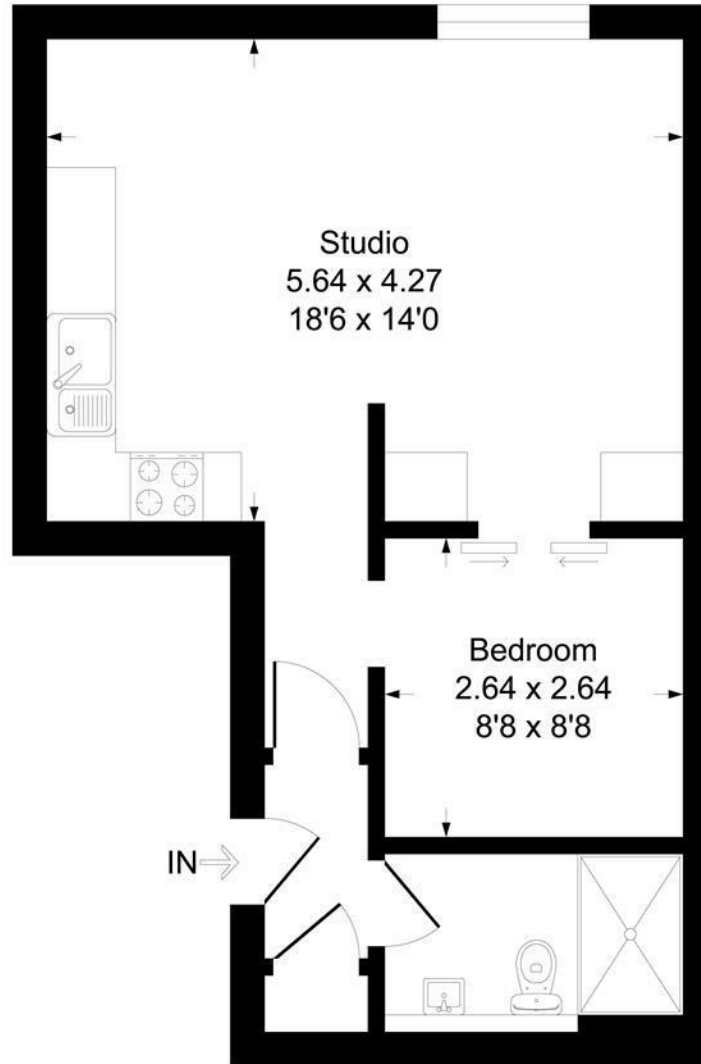
Although these particulars are thought to be materially correct their accuracy cannot be guaranteed and they do not form part of any contract





Peascod Place SL4

Approximate Gross Internal Floor Area = 40.8 sq m / 439 sq ft



First Floor

Illustration for identification purposes only, measurements are approximate, not to scale.
Produced By Esjay Property Marketing