



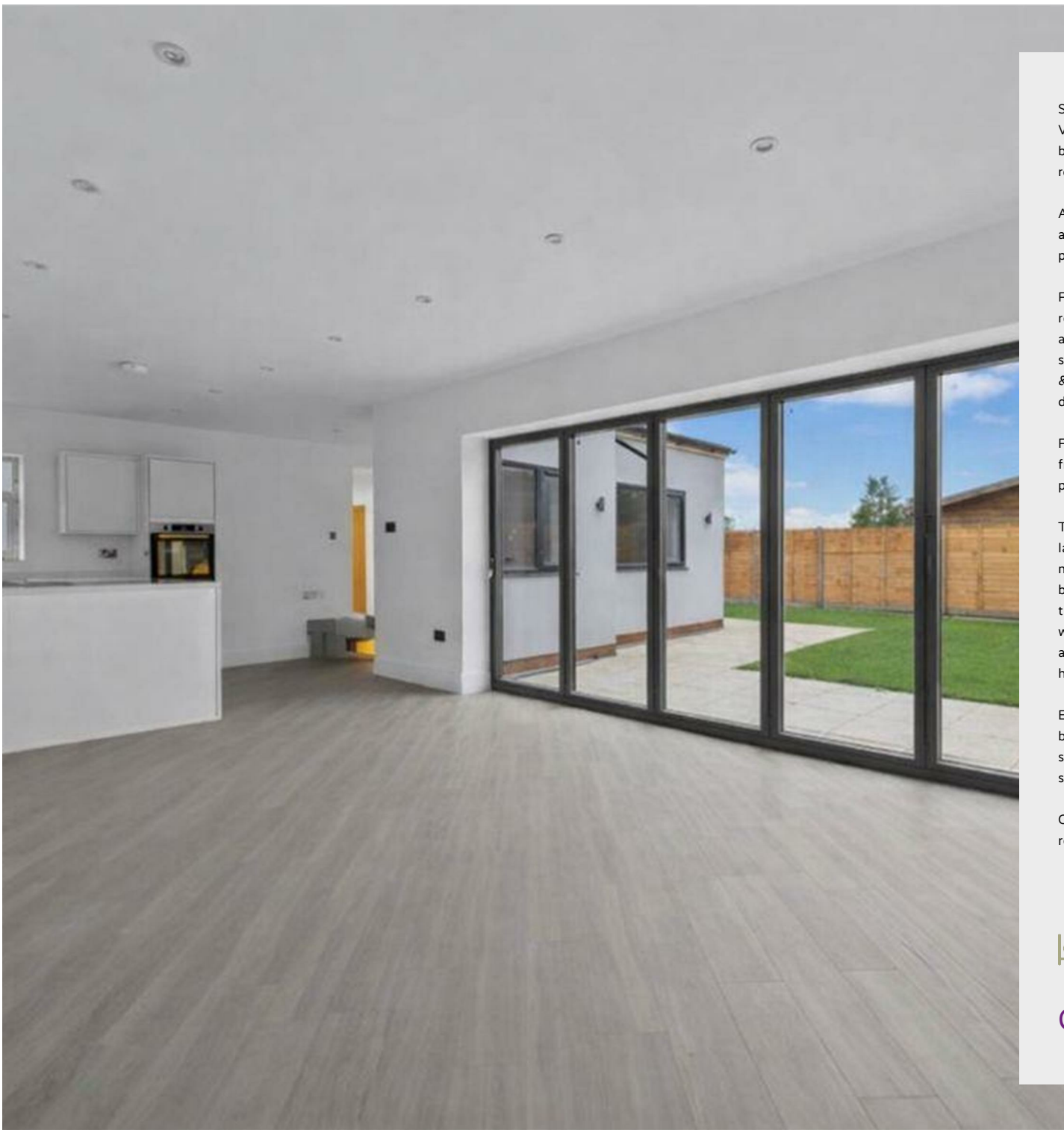
7 Brackenhill Close
Northampton, NN2 7LD



Derran Dooley

Partnered With

Simpsons
Property Experts



Situated at the very end of a quiet and highly sought-after cul-de-sac in Links View, NN2, this fully refurbished and extended three-bedroom detached bungalow offers an exceptional standard of modern living in a peaceful residential setting.

As you approach the property from the top of the cul-de-sac, the home enjoys a pleasant outlook down the road and benefits from a generous driveway providing off-road parking for numerous vehicles.

From the moment you step through the entrance porch, the quality of the refurbishment is immediately apparent. The accommodation is well planned and finished to a high standard throughout. To the front of the home are two spacious double bedrooms, one of which enjoys direct access to a stylish Jack & Jill family bathroom, finished with contemporary fittings and a sleek modern design.

Further along the hallway is the impressive master bedroom, which benefits from its own private en-suite shower room, providing a comfortable and practical retreat.

The rear of the property is where the home truly comes to life, featuring a large and extended open-plan lounge, kitchen, and dining area—perfect for modern family living and entertaining. The lounge area overlooks the beautifully designed rear garden, with bi-folding doors opening directly onto the outdoor space and allowing natural light to flood the room. The kitchen is well equipped with ample cupboard and worktop space, room for additional appliances, and high-quality fixtures and fittings, including Bosch oven and hob.

Externally, the rear garden is an excellent size and wraps around the bungalow, offering a great deal of privacy and versatility. It also houses a substantial garden shed, large enough to be used as an outdoor workshop, studio, or storage space.

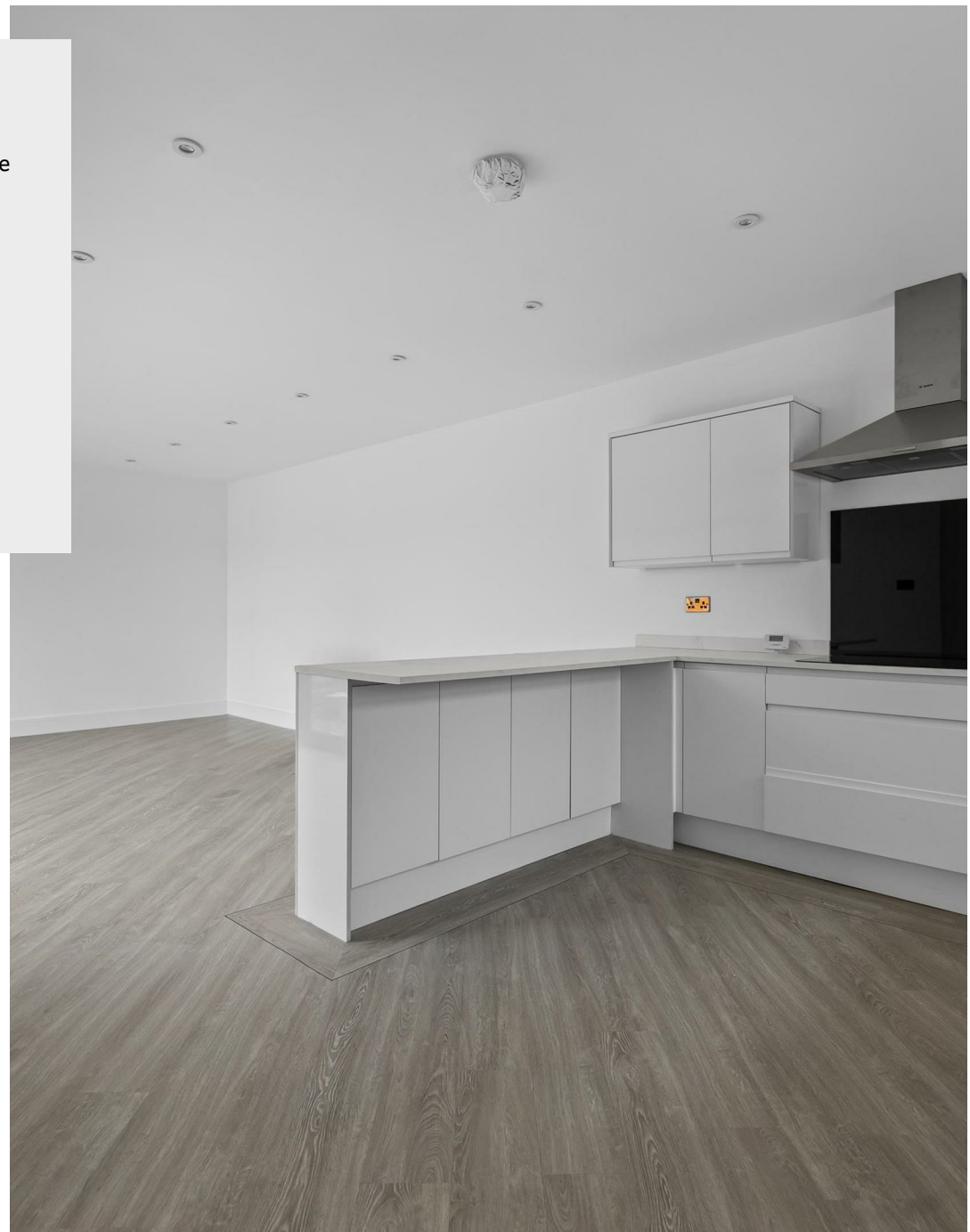
Overall, this is a rare and unique opportunity to purchase a beautifully refurbished, high-quality bungalow in a desirable residential location.



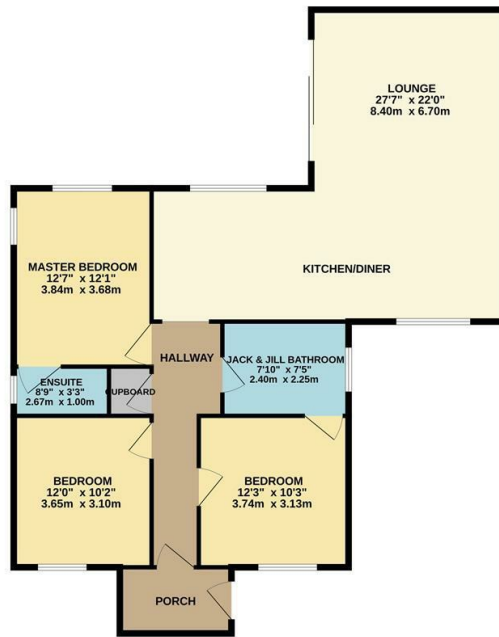
Guide price £395,000



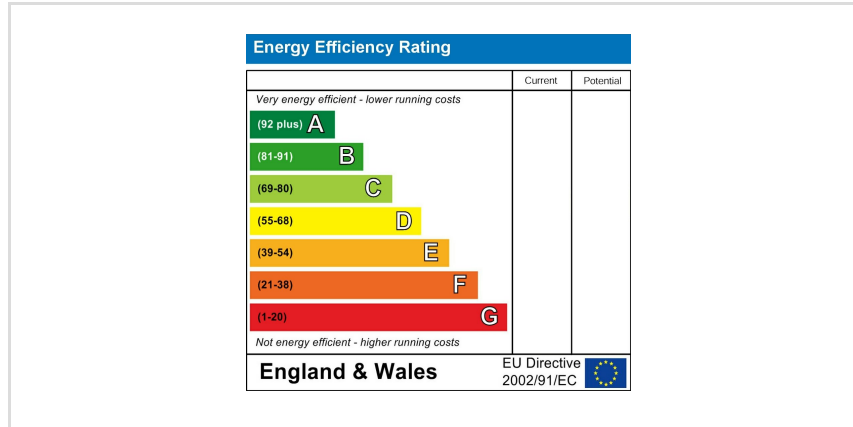
Links View is a quiet and well-regarded area within NN2, known for its peaceful cul-de-sacs, attractive surroundings, and strong sense of community. The location offers convenient access to local amenities, schools, and transport links, while also being close to green spaces and countryside walks, making it ideal for those seeking a balance of tranquillity and accessibility.



GROUND FLOOR



Whilst every attempt has been made to ensure the accuracy of the floor plan contained here, measurements of doors, windows, rooms and any other items are approximate and no responsibility is taken for any error, omission, or mis-statement. The plan is copyright to Companion and Partners and is for illustrative purposes and should only be used as such by any prospective purchaser. The services, systems and appliances shown have not been tested and no guarantee as to their operability can be given. Made with Homage 02025



You may download, store and use the material for your own personal use and research. You may not republish, retransmit, redistribute or otherwise make the material available to any party or make the same available on any website, online service or bulletin board of your own or of any other party or make the same available in hard copy or in any other media without the website owner's express prior written consent. The website owner's copyright must remain on all reproductions of material taken from this website.



Derran Dooley
Partnered With

Simpsons
Property Experts



Tel: 01604 969706

Email: northampton@simpsonspropertyexperts.co.uk

Web: simpsonspropertyexperts.co.uk/our-locations/northampton

