



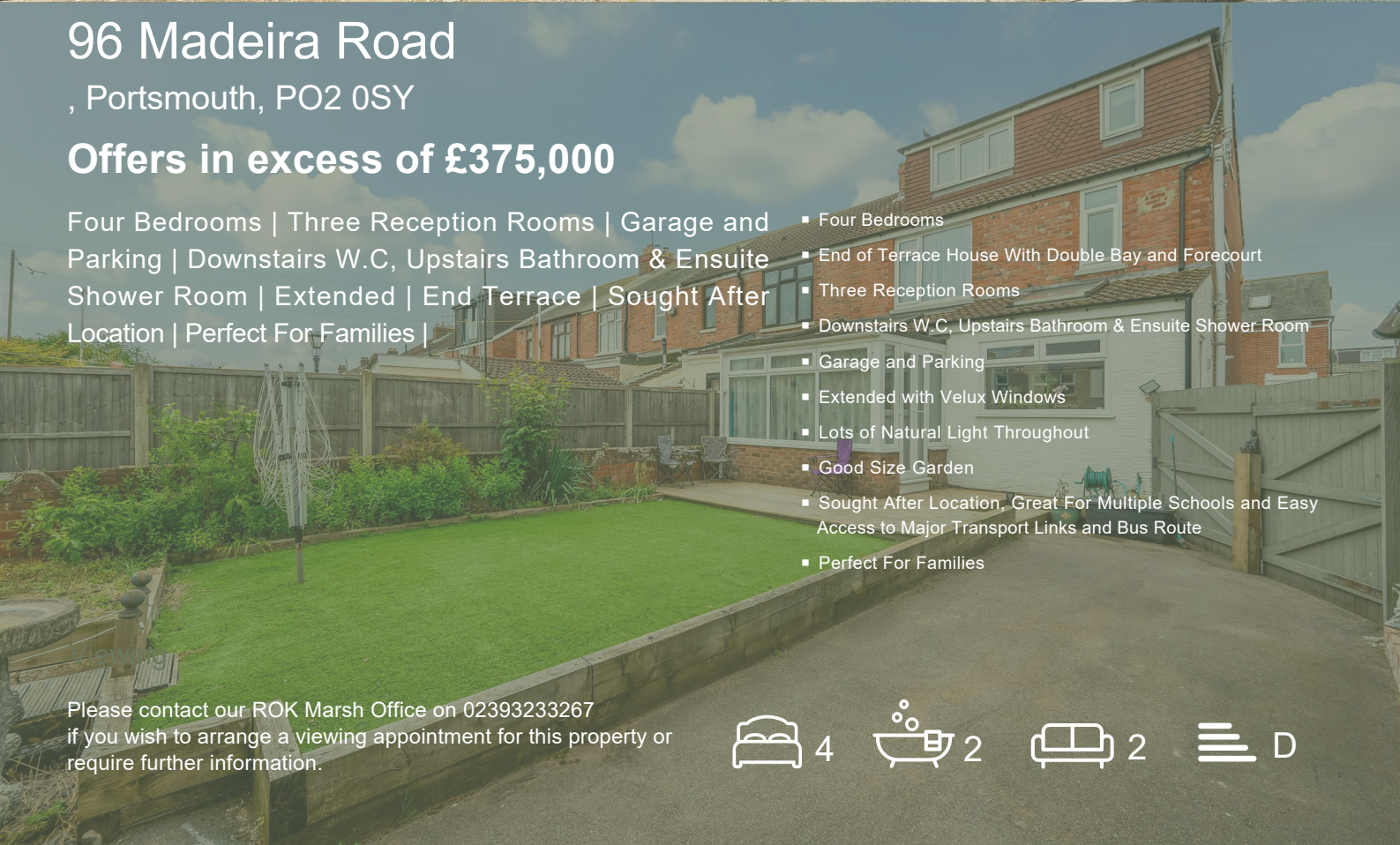
96 Madeira Road

, Portsmouth, PO2 0SY

Offers in excess of £375,000

Four Bedrooms | Three Reception Rooms | Garage and Parking | Downstairs W.C, Upstairs Bathroom & Ensuite Shower Room | Extended | End Terrace | Sought After Location | Perfect For Families |

- Four Bedrooms
- End of Terrace House With Double Bay and Forecourt
- Three Reception Rooms
- Downstairs W.C, Upstairs Bathroom & Ensuite Shower Room
- Garage and Parking
- Extended with Velux Windows
- Lots of Natural Light Throughout
- Good Size Garden
- Sought After Location, Great For Multiple Schools and Easy Access to Major Transport Links and Bus Route
- Perfect For Families



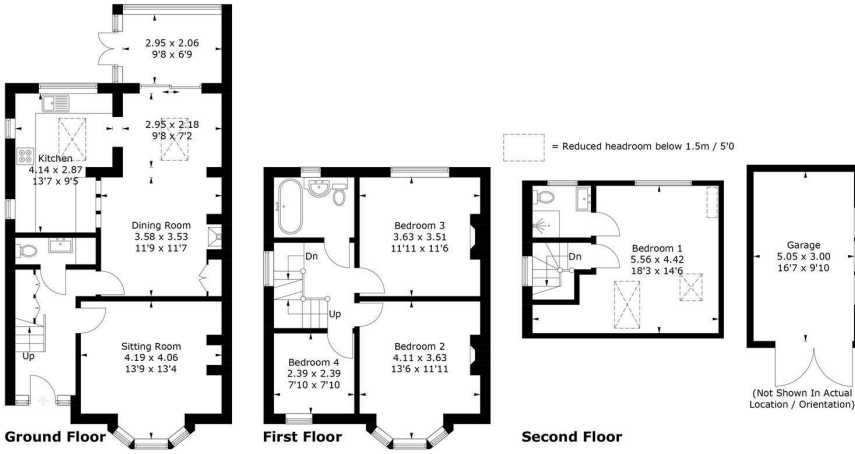
Please contact our ROK Marsh Office on 02393233267 if you wish to arrange a viewing appointment for this property or require further information.



Floor Plan

Madeira Road Portsmouth, PO2

Approximate Gross Internal Area = 135.2 sq m / 1455 sq ft
 Garage = 15.1 sq m / 162 sq ft
 Total = 150.3 sq m / 1617 sq ft



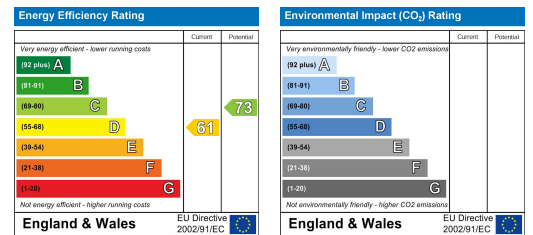
PRODUCED FOR ROK MARSH

Whilst every attempt has been made to ensure the accuracy of the floorplan, measurements of doors, windows and rooms are approximate. These plans are for representation purposes only as defined by RICS Code of Measuring Practice and used as such by any prospective purchaser. (ID1299393)

Area Map



Energy Efficiency Graph



These particulars, whilst believed to be accurate are set out as a general outline only for guidance and do not constitute any part of an offer or contract. Intending purchasers should not rely on them as statements of representation of fact, but must satisfy themselves by inspection or otherwise as to their accuracy. No person in this firm's employment has the authority to make or give any representation or warranty in respect of the property.