

## Siskin Close, Horsham

Guide Price £400,000

4 1 1

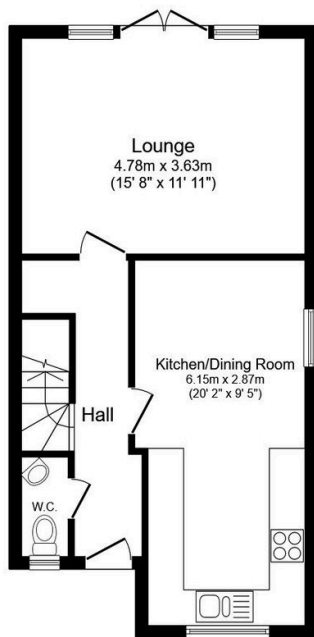


A spacious Four Bedroom Family Home located at the end of a Small Cul De Sac boasting Spacious Accomodation Over Three Floors, Close to Popular Schools and a double aspect 20ft Kitchen Dining Room.

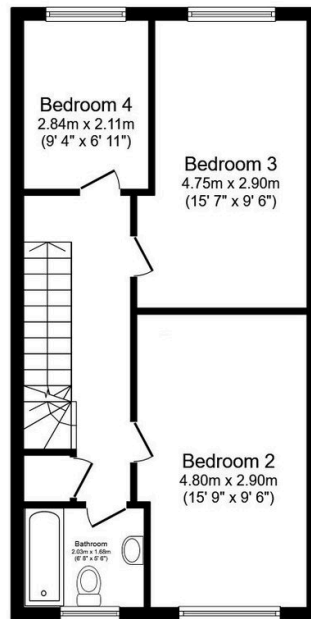
Tenure: Freehold  
Council Tax: Band D  
EPC Rating: Current C - Potential

## Key Features

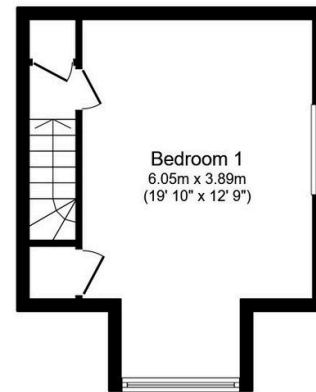
- Watch Our Video Tour
- Accommodation Over Three Floors
- 20ft Double Aspect Kitchen Dining Room
- Close To Popular Schools
- Ground Floor WC
- Four Generous Bedrooms
- Off Street Parking
- Cul De Sac Location
- 0.3 Miles From Littlehaven Station
- Attractive Rear Garden



**Ground Floor**  
Floor area 44.7 sq.m. (481 sq.ft.)



**First Floor**  
Floor area 47.2 sq.m. (508 sq.ft.)



**Second Floor**  
Floor area 25.1 sq.m. (271 sq.ft.)

Total floor area: 117.0 sq.m. (1,260 sq.ft.)

This floor plan is for illustrative purposes only. It is not drawn to scale. Any measurements, floor areas (including any total floor area), openings and orientations are approximate. No details are guaranteed, they cannot be relied upon for any purpose and do not form any part of any agreement. No liability is taken for any error, omission or misstatement. A party must rely upon its own inspection(s). Powered by [www.Propertybox.io](http://www.Propertybox.io)