



Magdalene Gardens, N20

£3,250 Per calendar month

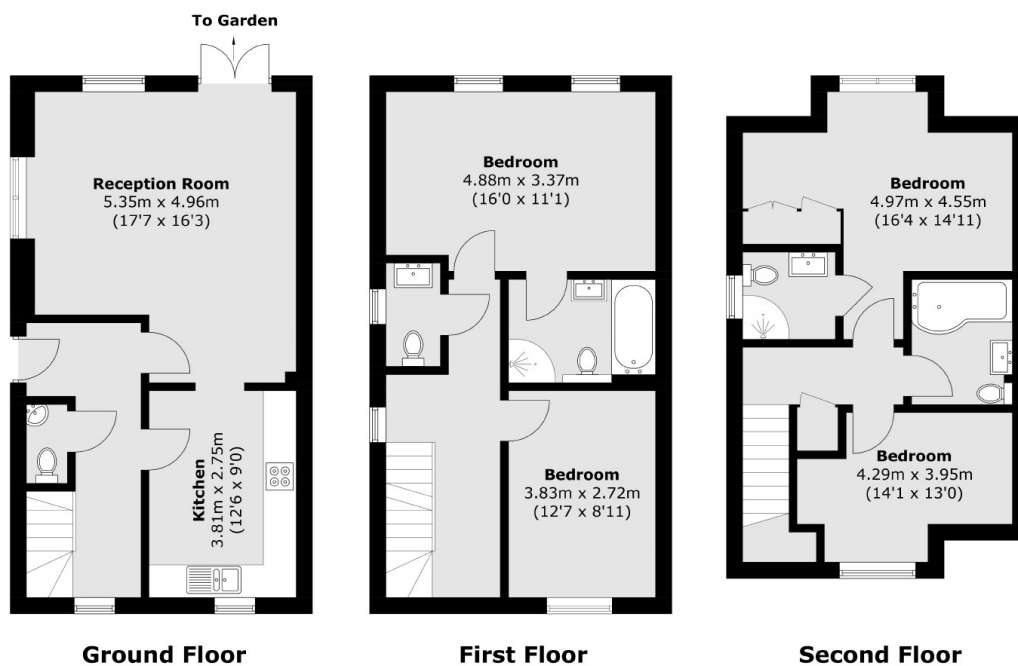
This is a modern four double bedroom residence, impeccably maintained, boasting three floors, spacious throughout, three bathrooms with two additional WC's, two parking bay spaces with the permit card, Gym workout for the residents (opening 7 days of week) and also a secluded garden.

Magdalene Gardens offers an enchanting gated community situated conveniently off Russell Lane. Its prime location provides easy access to Hampden Square and East Barnet Village, offering a charming array of local shops and efficient transport connections to Central London. Southgate Underground station, servicing the Piccadilly Line, lies just a mile away, while Oakleigh Park Station is a mere 0.8 miles distant. Moreover, residents enjoy proximity to some of the area's most picturesque green spaces, such as Oak Hill Park, Brunswick Park, and Bethune Park

Features

- Four Bedrooms
- Three bathrooms
- Semi-Detached House
- Two Parking Spaces
- Private Garden
- Two WCs
- 7 Day Access to Gym

Magdalene Gardens, London, N20



Total area (approx.): 131.8 sq. m (1,418.6 sq. ft)