

for sale

£420,000



## Catherall Road Luton LU3 2HW

Double story extension with potential to extend further!!! This heavily extended four bedroom semi detached family home is situated on a corner plot in the popular Icknield school catchment in LU3. The large plot offers a garage, two separate driveways and front, side and rear gardens.



# Catherall Road Luton LU3 2HW

## Entrance Hall

Double glazed door to front aspect. Double glazed frosted window to side aspect. Stairs leading to first floor. Under stairs storage cupboard. Radiator.

## Cloakroom

Double glazed frosted window to front aspect. Low level wc, Radiator.

## Lounge

Double glazed patio doors and windows to side aspect. Electric fireplace. Radiator.

## Kitchen/Diner

Double glazed window to front aspect. Double glazed patio doors to rear aspect. Fitted kitchen comprising a range of wall and base units with work surfaces over. Space for a fridge/freezer. Plumbing for a dishwasher. Gas cooker with integrated fan oven. Part tiled. Radiator.

## Utility Room

Double glazed frosted door to side aspect. Double glazed window.

## First Floor Landing

Double glazed frosted window to side aspect. Loft access with



combi boiler.

Single garage with up and over door.

### **Bedroom One**

Double glazed window to side aspect. Built in wardrobes. Radiator.

### **Bedroom Two**

Double glazed window to side aspect. Storage cupboard. Radiator.

### **Bedroom Three**

Double glazed window to side aspect. Radiator.

### **Bedroom Four**

Double glazed window to side aspect. Storage cupboard. Radiator.

### **Bathroom**

Double glazed frosted window to front aspect. Suite comprising bath with shower over, wash hand basin and low level wc. Fully tiled.

### **Front Garden**

Driveway providing off road parking for up to 2 vehicles. Lawn area.

### **Rear Garden**

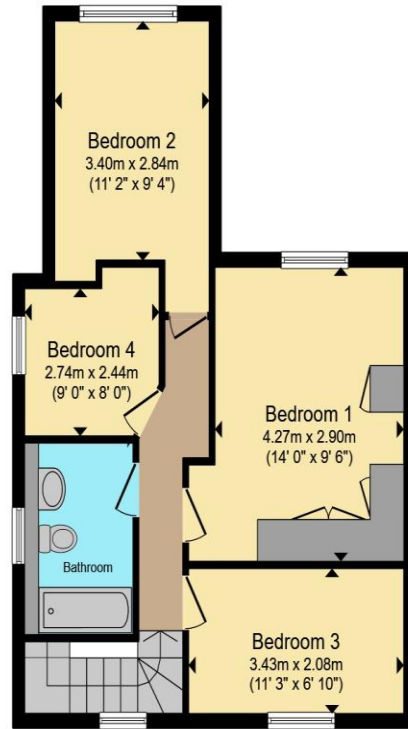
Laid to lawn with a patio area.

### **Garage**





**Ground Floor**



**First Floor**

Total floor area 110.3 m<sup>2</sup> (1,187 sq.ft.) approx

This floor plan is for illustrative purposes only. It is not drawn to scale. Any measurements, floor areas (including any total floor area), openings and orientation are approximate. No details are guaranteed, they cannot be relied upon for any purpose and they do not form part of any agreement. No liability is taken for any error, omission or misstatement. A party must rely upon its own inspection(s). Powered by www.propertybox.io



To view this property please contact Connells on

**T 01582 592332**  
**E lutonnorth@connells.co.uk**

1A Riddy Lane  
 LUTON LU3 2AD

Property Ref: LUN103786 - 0009

Tenure:Freehold EPC Rating: D

Council Tax Band: B

**view this property online**  
**connells.co.uk/Property/LUN103786**



1. MONEY LAUNDERING REGULATIONS Intending purchasers will be asked to produce identification documentation at a later stage and we would ask for your co-operation in order that there will be no delay in agreeing the sale. 2. These particulars do not constitute part or all of an offer or contract. 3. The measurements indicated are supplied for guidance only and as such must be considered incorrect. Potential buyers are advised to recheck measurements before committing to any expense. 4. We have not tested any apparatus, equipment, fixtures, fittings or services and it is in the buyers interest to check the working condition of any appliances.

Connells Residential is registered in England and Wales under company number 1489613, Registered Office is Cumbria House, 16-20 Hockliffe Street, Leighton Buzzard, Bedfordshire, LU7 1GN. VAT Registration Number is 500 2481 05.

see all our properties at [www.connells.co.uk](http://www.connells.co.uk) | [www.rightmove.co.uk](http://www.rightmove.co.uk) | [www.zoopla.co.uk](http://www.zoopla.co.uk)