



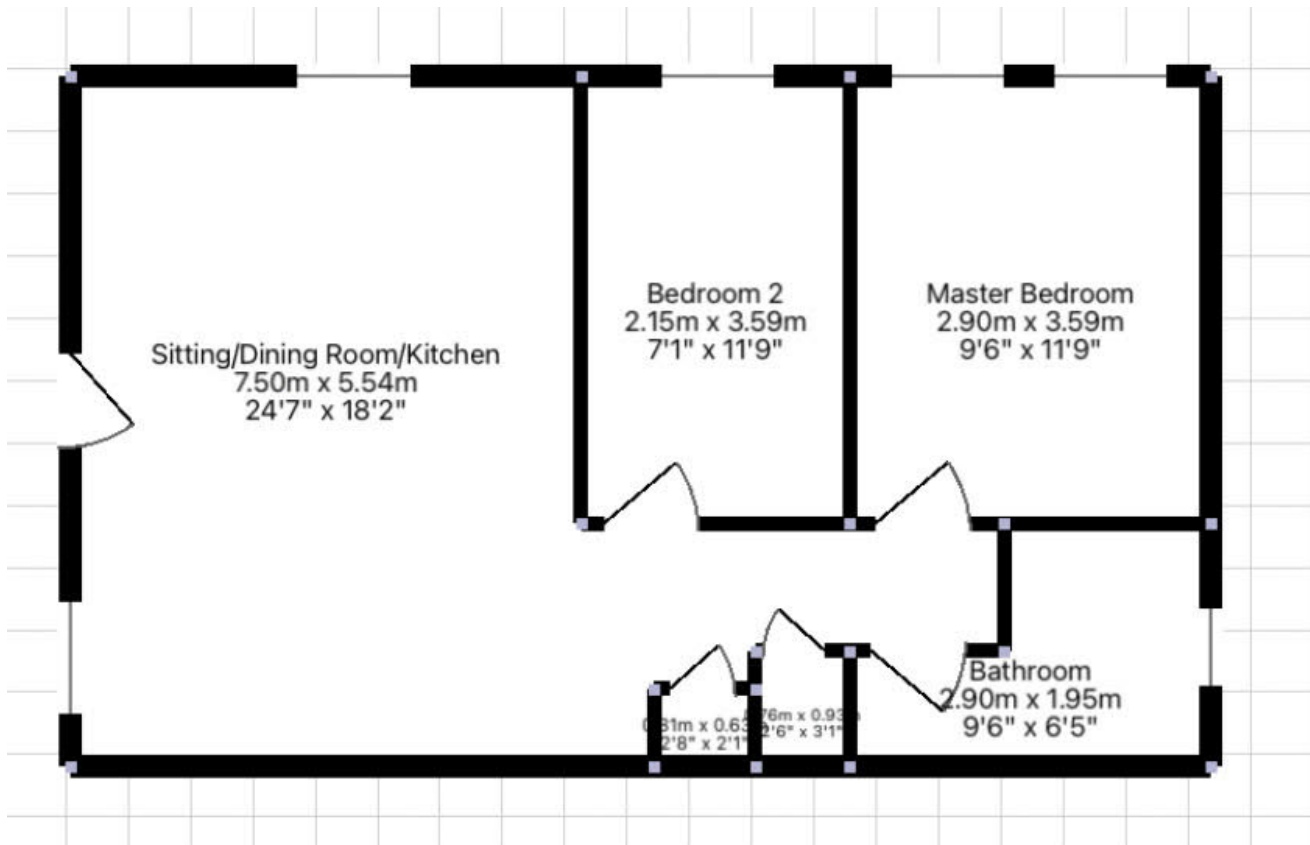
## Goldsmithey, TR20 - Charming 2-Bed Cornish Cottage Apartment, Garden & Parking Near Coast!

Offers In Region Of £199,000

 2  1  1



- 2 Double Bedroom - Impeccably presented characterful Cornish cottage in sought after village
- Stunning open-plan living space filled with natural light
- Private, low-maintenance courtyard garden perfect for relaxing
- Just over a mile from the stunning beaches of Mount's Bay and the iconic St Michael's Mount, offering endless coastal adventures.
- NO ONWARD CHAIN
- Beautifully renovated throughout with stylish, modern interiors
- Two generous double bedrooms offering flexible accommodation
- Allocated off-road parking – a rare and valuable feature
- Currently a successful and proven holiday let investment offering endless coastal adventures.
- Moments from local pub, shop and strong village community



Charming character Cornish cottage apartment in the heart of sought-after Goldsithney, beautifully renovated and ready to enjoy, successful holiday let with proven income potential, stylish open-plan living space flooded with natural light, modern fitted kitchen ideal for entertaining, two generous double bedrooms offering flexible accommodation, contemporary shower room with quality finishes, private courtyard garden perfect for relaxing and al fresco dining, allocated off-road parking – a rare and valuable feature, vibrant village location with popular pub and strong community feel, just over a mile to Mount's Bay beaches and coastal



paths, close to Marazion, Penzance and St Michael's Mount, excellent transport links including mainline rail to London, ideal turnkey investment, lock-up-and-leave holiday home or full-time coastal residence, low-maintenance lifestyle in a prime West Cornwall location