

# RIVERHOMES

Church Street  
Chiswick W4

£5,250,000  
Freehold

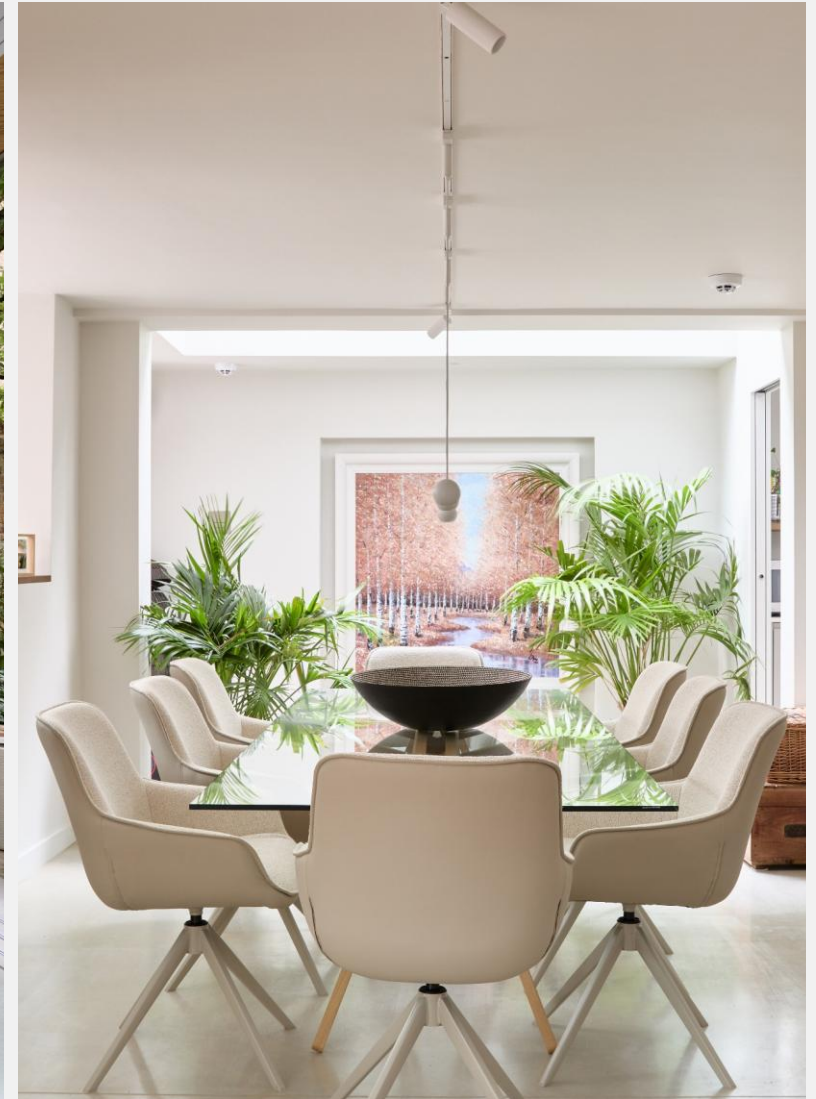


## Church Street Chiswick W4

Tucked away on the cusp of the iconic Chiswick Mall and moments from the River Thames, sits this striking detached five bedroom residence. Originally designed by renowned Hungarian modernist architect Stefan Buzas it has recently undergone a meticulous, architect led transformation. Now a fully reimagined smart home, the property blends minimalist design, luxury finishes, and cutting edge technology across an expansive and versatile living space. Secure electric gates open onto a private resin-bound driveway with space for up to three vehicles and EV ready wiring. Inside, a full 'back to brick' refurbishment has introduced solid polished concrete floors, new electrics, plumbing and heating, while retaining the structure's robust concrete frame.

The ground floor offers incredible flexibility for multi-generational living and entertaining, with underfloor heating throughout. A purpose built movie room with Dolby Atmos surround sound, doubles as a self-contained studio apartment, complete with a bespoke kitchen, integrated wine fridge, en suite shower room and its own private entrance. The heart of the home lies to the rear of the ground floor: a vast open-plan living space with triple glazed Hyline sliding doors that vanish into pocket walls, bringing the outdoors in. The Pronorm kitchen features solid walnut cabinetry, Taj Mahal leathered quartzite worktops, dual Quooker taps and fully integrated, app connected, Miele appliances. Adjacent, a hidden utility room houses Miele laundry appliances and an intelligent indoor drying system.





## Church Street Chiswick W4

Occupying the entire travertine marbled first floor, the air-conditioned and underfloor heated master suite, delivers the ultimate in comfort and style. A bespoke Molteni dressing room, spa like en suite with twin showers and a Japanese smart toilet are paired with a private balcony offering glimpses of the Thames.

Ascending to the top floor, you will find three further bedrooms, one of which features an en suite shower room. The other two bedrooms share a luxury family bathroom with an electric skylight and underfloor heating, and both have sight of the river Thames. In addition, the roof is accessed by a staircase with a custom built, 3 metre powered, electric skylight.

The meticulously landscaped rear garden provides a tranquil retreat featuring a solid concrete patio, luxury outdoor stainless-steel kitchen with mains gas Wolf and separate Kamado Joe BBQ's, year-round planting with full irrigation, lighting and external WiFi coverage. The custom-built annexe houses a fully approved self-contained studio unit with a separate gym.

Additional highlights include: hot water underfloor heating throughout, app-controlled lighting, electric blinds, integrated misting fire suppression, Cat 6 cabling and full WiFi coverage, alarm and video entry systems.

This is a rare, modernist, architect inspired, technically advanced, and quietly luxurious home.

### KEY FEATURES

**5 bedrooms**

**4 bathrooms**

**3 floors**

**Smart home**

**Media room**

**Roof access via automated skylight**

**Rear garden with stainless steel kitchen and Wolf and separate Kamado Joe BBQ's**

**Custom built annexe with self contained studio and gym**

**App connected lighting and electric blinds**

**Integrated misting fire suppression, and Cat 6 cabling**

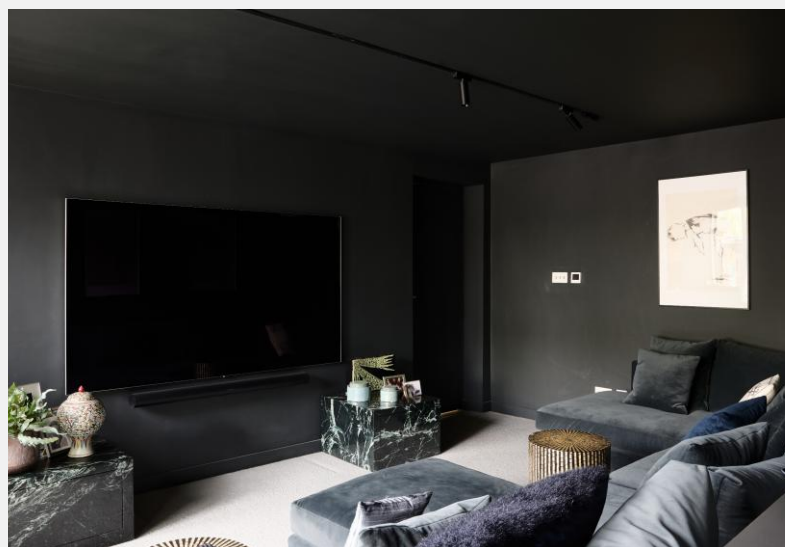
**Full WiFi coverage, alarm and video entry systems**

**Driveway with space for three plus cars and EV ready wiring**

**Moments away from Chiswick High Street**

**Excellent transport links to Turnham Green station**

**Close proximity to St Paul's and Latymer schools**





Church Street  
Chiswick W4

£5,250,000  
Freehold

ENERGY PERFORMANCE CERTIFICATE

| Score | Energy rating | Current | Potential |
|-------|---------------|---------|-----------|
| 92+   | A             |         |           |
| 81-91 | B             | 84 B    | 86 B      |
| 69-80 | C             |         |           |
| 55-68 | D             |         |           |
| 39-54 | E             |         |           |
| 21-38 | F             |         |           |
| 1-20  | G             |         |           |

KEY INFORMATION

**Local authority:** London Borough of Hounslow  
**Internal area:** 3,626 sq. ft. / 336.92 sq. m.  
**No. of bedrooms:** 5  
**Council tax band:** G - £3,476.37 approx. per annum





# RIVERHOMES

West London Branch  
28 Thames Road  
London  
W4 3RJ

020 8995 0500  
[www.riverhomes.co.uk](http://www.riverhomes.co.uk)



World Waterside Ltd trading as riverhomes for themselves and its clients give notice that 1: They are not authorised to make or give any representations or warranties in relation to the property either here or elsewhere, either on their own behalf or on behalf of their client or otherwise. 2: These particulars do not form part of any offer or contract and must not be relied upon as statements or representations of fact. Any areas, measurements or distances are approximate. The text, photographs and plans are for guidance only and are not necessarily comprehensive. 3: It should not be assumed that the property has all necessary planning, building regulation or other consents and any services, equipment or facilities have not been tested. 4: Lease details, service charges, ground rent (where applicable) and council tax are given as a guide only and should be checked and confirmed by your Solicitor prior to exchange of contracts. 5: They assume no responsibility and any intending purchasers or tenants must satisfy themselves by inspection or otherwise as to the correctness of each of the statements contained within these particulars. If you require clarification of any points please contact us.