

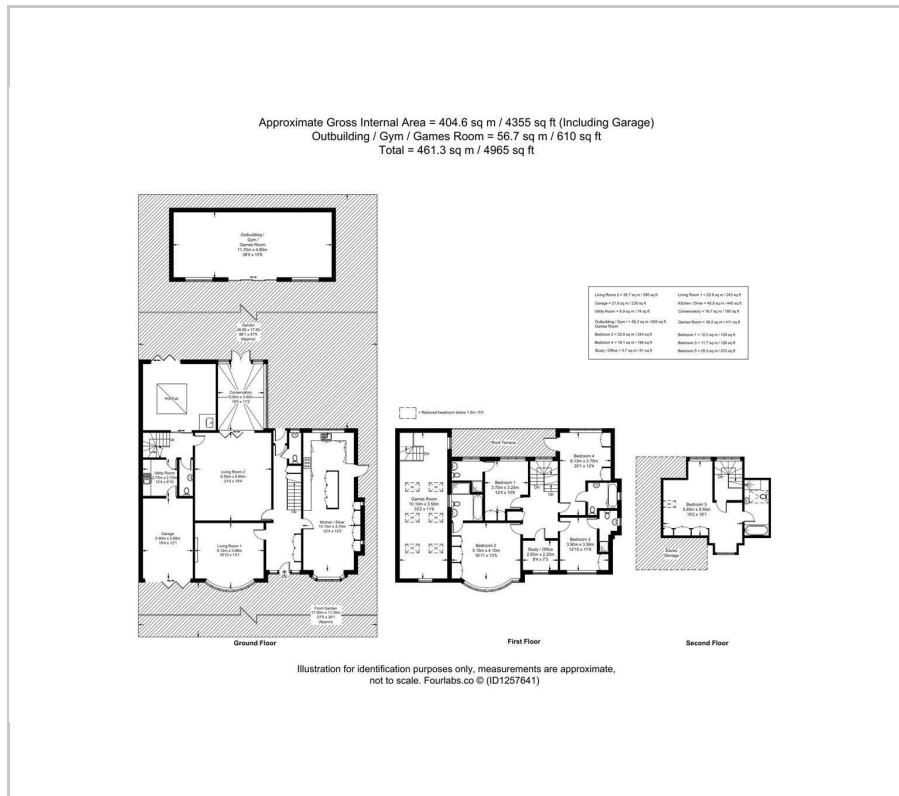


Broad Walk, Winchmore Hill, N21

£10,000 PCM

5 5 3 C

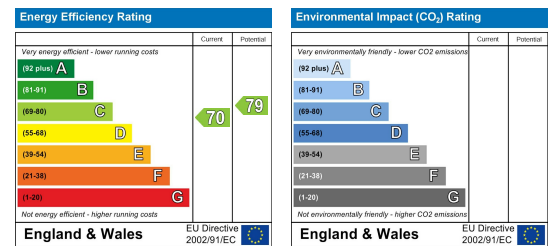
Floor Plan



Area Map



Energy Efficiency Graph



Viewing

Please contact our Homelink Lettings & Estates Office on 0208 882 2112 if you wish to arrange a viewing appointment for this property or require further information.

- Impressive five-bedroom detached residence in a prestigious N21 location.
- Five luxury en-suite bathrooms, offering privacy and convenience.
- Multiple spacious reception rooms for flexible family living.
- Games and entertainment room within the outbuilding.
- Approx. 4,965sq ft of beautifully appointed living accommodation.
- Stunning kitchen and dining area, ideal for entertaining.
- Separate garden outbuilding featuring a fully equipped gym.
- Private landscaped garden, perfect for relaxation and outdoor enjoyment.

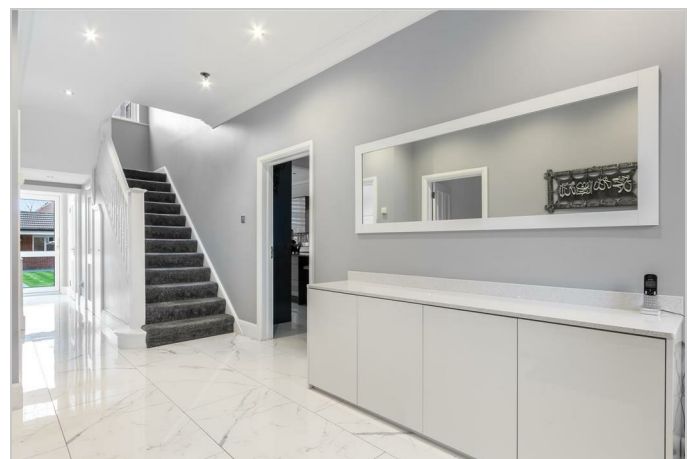
Broad Walk, London N21.

Set within one of N21's most prestigious residential addresses, this exceptional five-bedroom detached residence offers an outstanding standard of luxury living, extending to approximately 4,965 SQ ft of beautifully designed accommodation.

Upon entering, you are welcomed by an impressive entrance hall that leads to a series of elegant reception rooms and a stunning open-plan kitchen and dining area. Designed with both comfort and entertaining in mind, the bespoke kitchen forms the heart of the home, seamlessly connecting to the dining and living spaces to create a sophisticated yet practical environment for modern family living.

The property offers five generously proportioned bedrooms, each complemented by its own luxurious en-suite bathroom, providing privacy and convenience for both family members and visiting guests.

A particular highlight of the home is the separate garden outbuilding, which has been thoughtfully designed to include a fully equipped gym and games/entertainment room. This versatile space provides the perfect setting for fitness, recreation, or a private retreat, all within the tranquility of the landscaped garden.



These particulars, whilst believed to be accurate are set out as a general outline only for guidance and do not constitute any part of an offer or contract. Intending purchasers should not rely on them as statements of representation of fact, but must satisfy themselves by inspection or otherwise as to their accuracy. No person in this firm's employment has the authority to make or give any representation or warranty in respect of the property.

Homelink Lettings and Estates
 62 Chase Side, London N14 5PA
 0208 882 2112 homelink.co.uk

