



FRANCIS LOUIS

Residential



Mount Dinham Court, Exeter, EX4 4FX

Price Guide £300,000





Mount Dinham Court

Exeter, EX4 4FX

- Secure underground allocated parking
- Neutral décor, quality flooring, and tasteful finishes
- NO CHAIN
- Stylish and fully furnished throughout
- Gas central heating and large radiators under each window

Ground Floor | Stylish Two-Bedroom, Two-Bathroom Apartment with Parking in Historic Setting.

Francis Louis is proud to present this beautifully appointed ground floor, two-bedroom, two-bathroom apartment offering 687 sq ft of stylish, turnkey living space with secure underground parking. Nestled in a well-maintained and characterful development, this home is an outstanding opportunity for buyers seeking elegance, practicality, and location in equal measure.



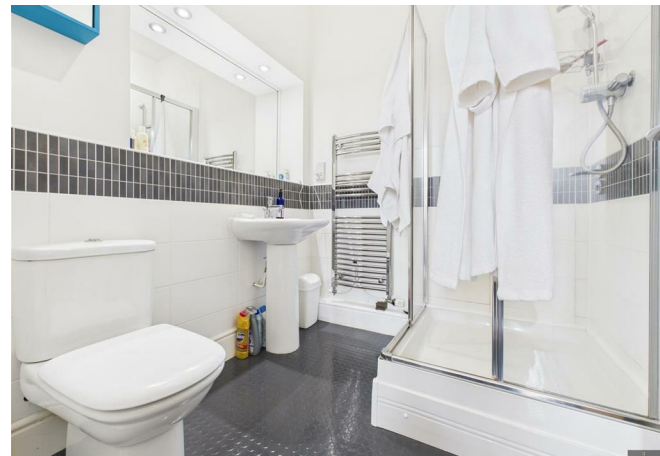
Blending Period Charm with Modern Sophistication
Located on the ground floor, this spacious home is flooded with natural light thanks to its floor-to-ceiling windows and soaring high ceilings. The architectural charm of the building's heritage is matched with smart contemporary finishes, making it ideal for both comfortable everyday living and impressive entertaining.

Exceptional Open Plan Living

At the heart of the home lies a generous open-plan kitchen, living, and dining space (19'1" x 11'5"). The bespoke kitchen features integrated modern appliances, elegant cabinetry, and sleek worktops. The layout flows effortlessly into a bright and spacious lounge and dining zone, with space for a dedicated home office corner—perfect for modern hybrid lifestyles.

Two Generous Double Bedrooms

The principal bedroom is an elegant retreat, complete with a luxurious four-poster bed, fitted wardrobes, and ample natural light. The second double bedroom offers great versatility—ideal for guests, children, or a home office setup.





Two Contemporary Shower Rooms
The apartment benefits from two stylish Shower rooms
Both spaces are immaculately presented with modern tiling and fittings.

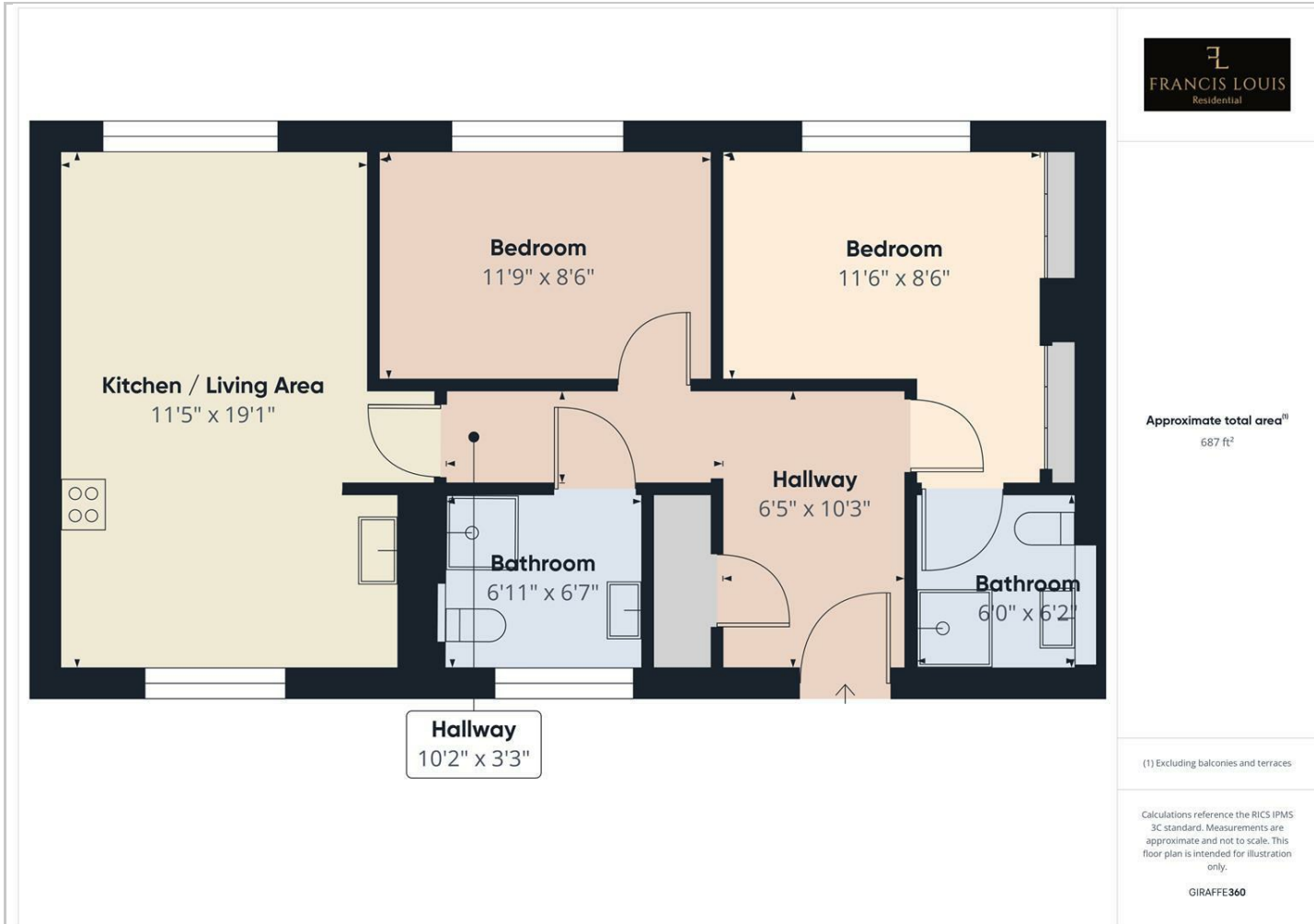
Prime Location
Positioned in a sought-after residential area with easy access to local shops, green spaces, and excellent transport connections, this property will appeal to professionals, couples, downsizers or investors alike.

LEASE DETAILS
There is 182 years left on the lease, the yearly service charge is circa £546 and the annual insurance is circa £360.

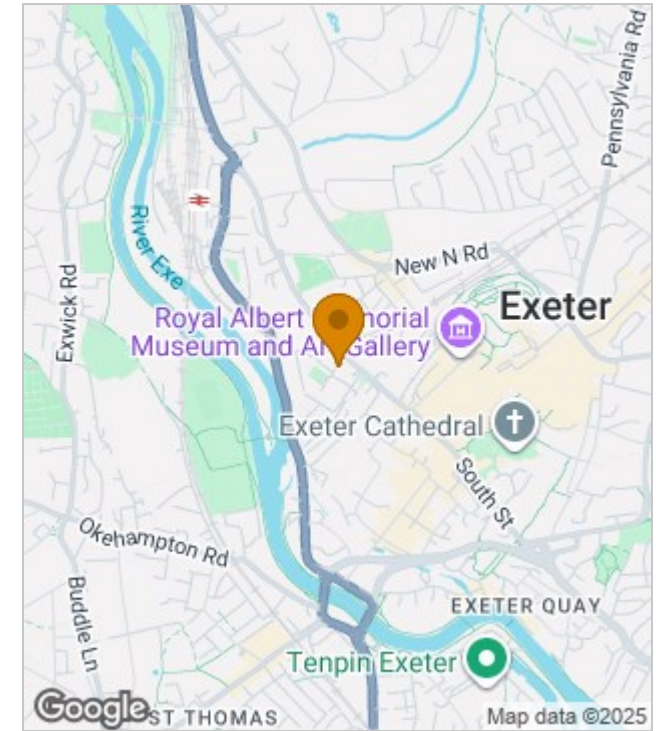




Floor Plans



Location Map



Viewing

Please contact our Francis Louis Sales Office on 01392 243077 if you wish to arrange a viewing appointment for this property or require further information.

Lower Ground Floor, 70 South Street, Exeter, Devon, EX1 1EG
Tel: 01392 243077 Email: info@francislouis.co.uk <https://www.francislouis.co.uk>

The particulars are set out as a general outline only for the guidance of intended purchasers or lessees, and do not constitute, any part of a contract. Nothing in these particulars shall be deemed to be a statement that the property is in good structural condition or otherwise nor that any of the services, appliances, equipment or facilities are in good working order. Purchasers should satisfy themselves of this prior to purchasing.