



**Chalfont Close, Hemel Hempstead, HP2 7JR**  
**£525,000**

Located in this sought after Cul de Sac in Woodhall Farm is this spacious and well presented detached house. Boasting four bedrooms, 13'1 fitted kitchen/breakfast room, 24'6 lounge/dining room, conservatory, downstairs cloakroom, gas central heating, double glazing, garage and off road parking.

Situated within easy reach of the local shops including a Sainsburys, primary schools, transport facilities and the M1, M25 and A41 road links.

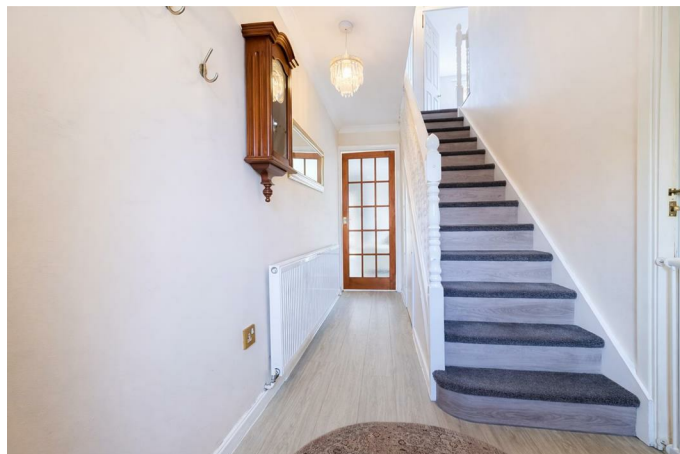
Located in the tranquil cul-de-sac of Chalfont Close, Woodhall Farm, this charming four-bedroom detached house offers a perfect blend of comfort and convenience. Spanning an impressive 990 square feet, the property boasts a spacious 24'6 lounge/dining room, ideal for both relaxation and entertaining. The adjoining conservatory invites natural light, creating a warm and welcoming atmosphere throughout the home.

The well-appointed 13'1 fitted kitchen/breakfast room is perfect for culinary enthusiasts, providing ample space for meal preparation and casual dining. With four generously sized bedrooms, this residence is well-suited for families or those seeking extra space for guests or a home office.

Gas central heating and double glazing ensures a cosy environment during the colder months, while off-road parking and garage adds to the practicality of this delightful home. The location is not only peaceful but also conveniently situated, offering easy access to local amenities and transport links.

This property presents an excellent opportunity for those looking to settle in a family-friendly neighbourhood. With its spacious layout and inviting features, it is sure to appeal to a wide range of buyers. Do not miss the chance to make this lovely house your new home.

### **Entrance Hall**



### **Lounge/Dining Room 24'6 x 12'11 (7.47m x 3.94m)**



### **Conservatory 11'2 x 10'9 (3.40m x 3.28m)**



### **Fitted Kitchen/Breakfast Room 13'1 x 10'1 (3.99m x 3.07m)**



**Downstairs Cloakroom**



**Bedroom Two 12'9 x 9'11 (3.89m x 3.02m)**



**Landing**



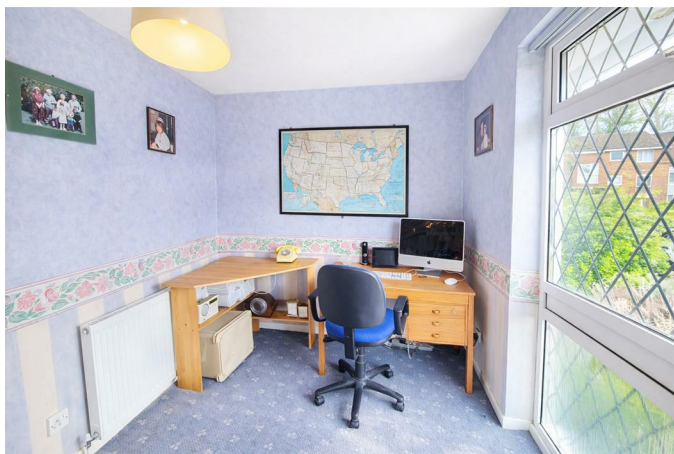
**Bedroom Three 11'7 x 9'11 (3.53m x 3.02m)**



**Bedroom One 14'0 x 11'2 (4.27m x 3.40m)**



**Bedroom Four 10'2 x 10'0 (3.10m x 3.05m)**



## Bathroom



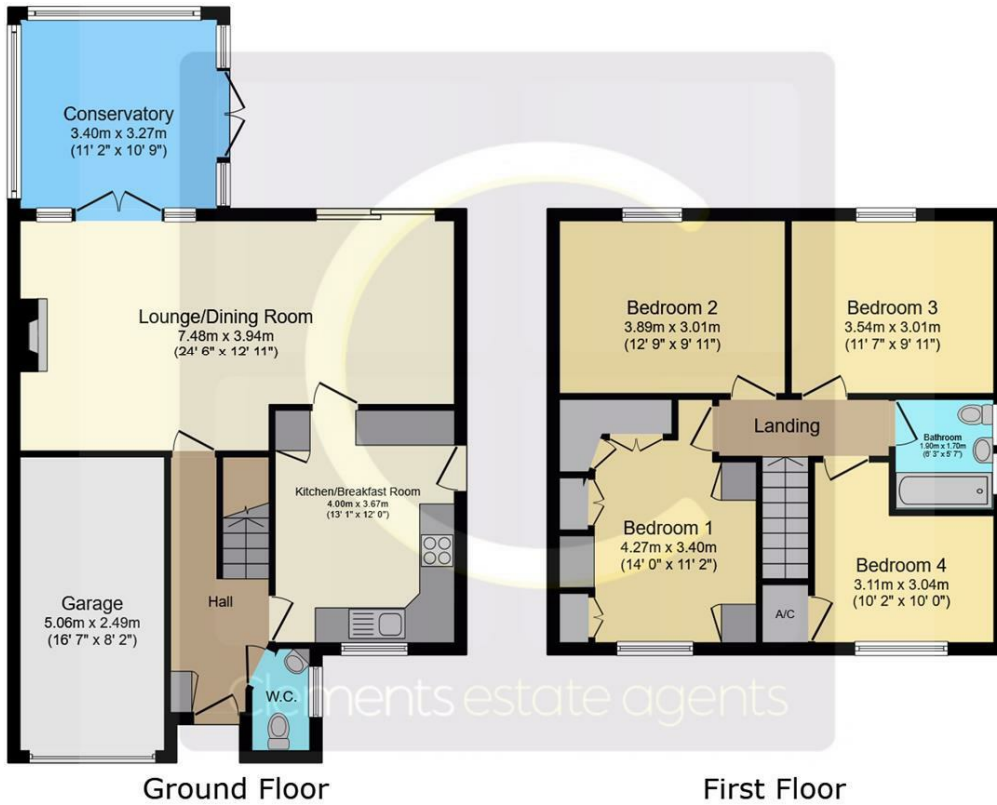
## Off Road Parking

## Garage

## Rear Garden



# Floor Plan

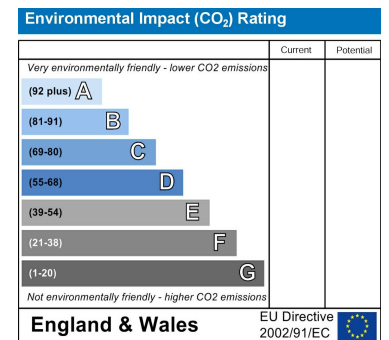
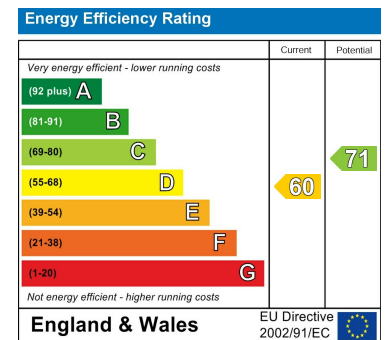


This floor plan is for illustrative purposes only. It is not drawn to scale. Any measurements, floor areas (including any total floor area), openings and orientations are approximate. No details are guaranteed, they cannot be relied upon for any purpose and do not form any part of any agreement. No liability is taken for any error, omission or misstatement. A party must rely upon its own inspection(s). Powered by www.Propertybox.io

# Area Map



# Energy Efficiency Graph



These particulars, whilst believed to be accurate are set out as a general outline only for guidance and do not constitute any part of an offer or contract. Intending purchasers should not rely on them as statements of representation of fact, but must satisfy themselves by inspection or otherwise as to their accuracy. No person in this firm's employment has the authority to make or give any representation or warranty in respect of the property.

45 Marlowes, Hemel Hempstead, Hertfordshire, HP1 1LD

Tel: 01442 214151 Email: sales@clementsestateagents.co.uk <https://www.clementsestateagents.co.uk>