



## Pellerin Road, N16

£625,000

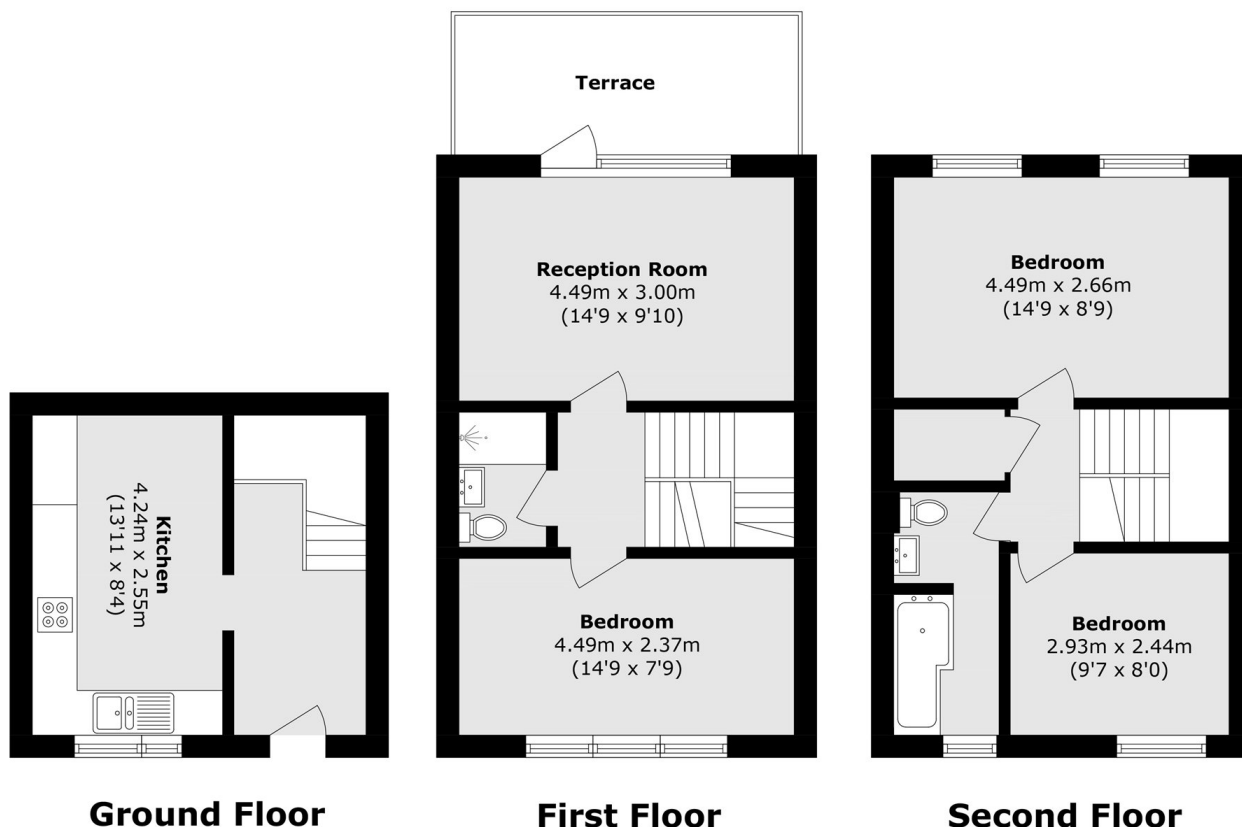
A three bedroom, two bathroom maisonette laid out across three floors. The property benefits from a separate kitchen, large living room and a south facing terrace.

Pellerin Road is centrally located between the amenities and eateries of Dalston and Newington Green. Dalston Kingsland and Junction (overground) provide quick access to The City and East London.

### Features

- Three Bedrooms
- Two Bathrooms
- Separate Kitchen
- South Facing Terrace
- Private Entrance
- Chain Free

# Pellerin Road, London, N16



Total area (approx.): 86.4 sq. m (930.0 sq. ft)  
Terrace Total (approx.): 9.0 sq. m (96.9 sq. ft)