



## Cambalt Road, SW15

£1,795 Per calendar month

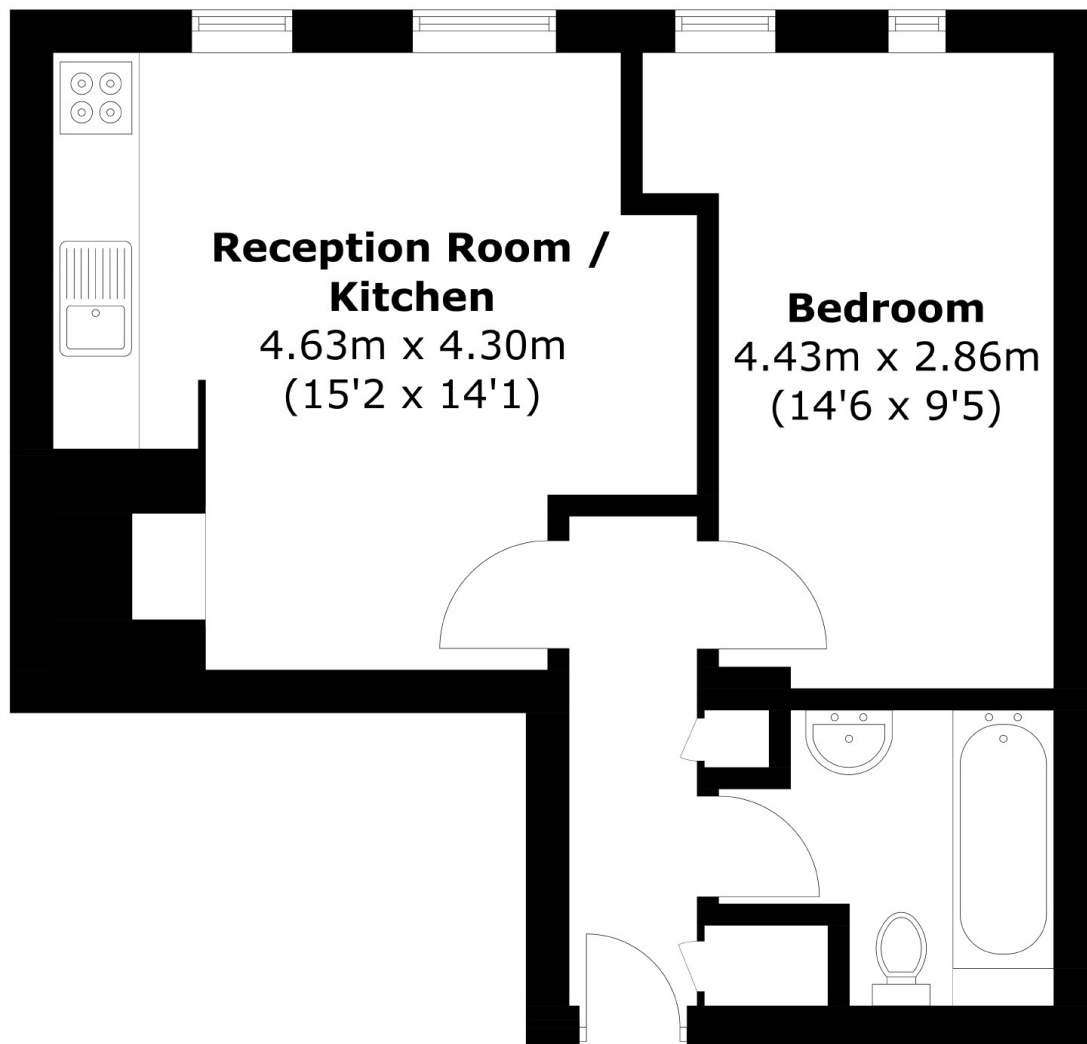
This open plan one bedroom first floor flat is well situated in the heart of Putney. The property has a bright reception room with modern kitchenette, a spacious double bedroom, tiled bathroom and access to communal gardens.

Cambalt Road is a peaceful residential street in the heart of Putney, conveniently located just a short walk from Putney High Street. Here, you'll find a wide range of amenities, including shops, restaurants, and leisure facilities.

### Features

- One Double Bedroom
- Bright & Spacious
- Open Plan Reception
- Good Storage Space
- Tiled Bathroom
- Communal Garden

# Cambalt Road, London, SW15



Total area (approx.): 37.9 sq. m (407.9 sq. ft)