

## Charter Road, KT1

£525,000

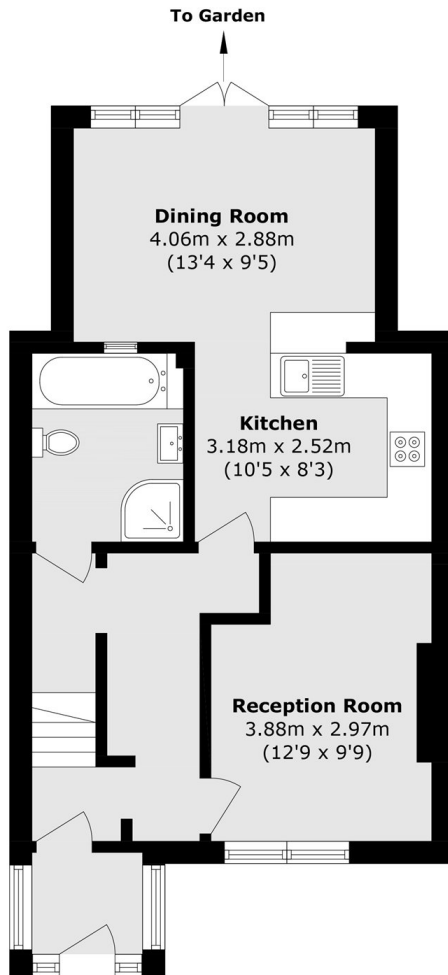
A spacious three-bedroom family home situated on a quiet residential road and offered for sale with no onward chain. The property has been extended to the rear, creating a superb open-plan kitchen/dining room with views over the garden, ideal for modern family living. Completing the ground floor is the front reception room and family bathroom. The first floor provides three well proportioned bedrooms.

Charter Road is located equidistant and just over a mile to either Kingston or New Malden with Norbiton Station and its selection of both local stores and large supermarkets less than half a mile away

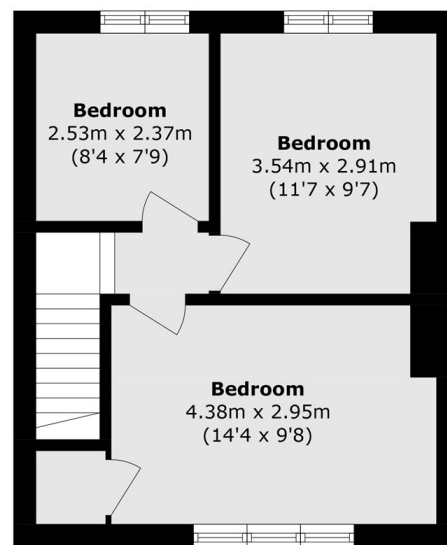
### Features

- Three Bedrooms
- Ground Floor Extension
- Private Garden
- Off Street Parking
- No Onward Chain
- Potential To Extend (STPP)

# Charter Road, Kingston Upon Thames, KT1



**Ground Floor**



**First Floor**

Total area (approx.): 85.5 sq. m (920.3 sq. ft)