



Westcliffe Apartments, Paddington, W2

£680,000

- 7th floor apartment
- Two bedrooms
- Family Bathroom
- Parking included
- Open-Plan Reception / Kitchen
- approx. 657 sq ft living space
- Comfort cooling
- 24 Hour concierge
- Great transport links

This bright and spacious two-bedroom apartment offers exceptional modern interiors on the seventh floor of Westcliffe Apartments, a premier waterside, purpose-built residential block perfectly situated right in the vibrant heart of Paddington. Parking included.

The beautifully well-presented property features a premium comfort cooling system, full residents' lift access, and the added luxury, security, and convenience of a dedicated 24-hour concierge service.

Inside, the expansive open-plan reception room boasts stylish hardwood flooring and integrates seamlessly with a fully integrated, modern kitchen. The premium accommodation includes a generous main double bedroom complete with handy built-in wardrobes, a comfortable second guest bedroom, and a modern second guest bathroom.

Superbly situated on South Wharf Road (W2), this exceptional development places you right in the center of Central London. Residents enjoy immediate access to the West End's world-class shopping, diverse theatres, vibrant bars, and world-renowned restaurants. Local transport links are completely unmatched, with nearby Paddington Mainline and Underground stations offering effortless daily travel, while the speedy Heathrow Express train provides a quick, convenient 20-minute connection directly to the airport terminals.





ONE LONDON

PROPERTY

*Westcliffe Apartments,
Paddington, W2*

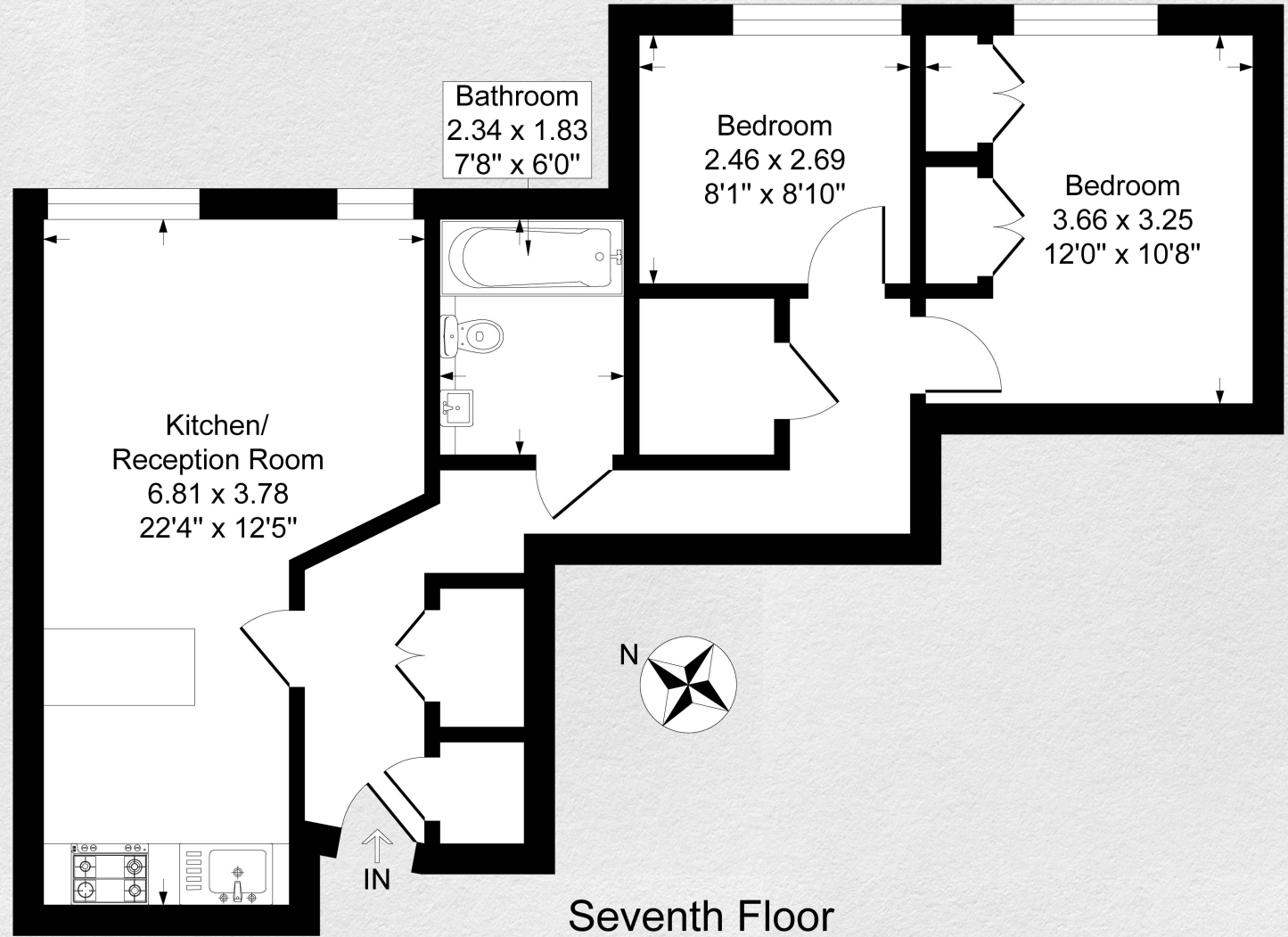
SIZE

approx. 657 sq ft

Two bedrooms | One bathroom

CONTACT

0207 856 0396
info@one-london.uk
www.one-london.uk



*** For illustration purposes only. Could not be to scale.
One-London aims to ensure accuracy but is not liable
for any discrepancies.*

WA517