



**Guide Price**  
**£325,000**

**Freehold**

2x  1x  1x 

**Ethelred Court,  
Ethelbert Road,  
Faversham, Kent, ME13**

**OVER 60?**

Secure this property  
for up to **59% less!**

*Wards*  
Helping you move forwards





## Main features

- Beautifully converted Edwardian school in the heart of Faversham
- Highly desirable location
- Walking distance to mainline station, shops, cafes and restaurants
- Many original features
- No onward chain

## Accommodation

### GROUND FLOOR

Lounge/Diner: 22'11 x 14'3 (6.99m x 4.35m)

Kitchen: 11'6 x 8'3 (3.51m x 2.52m)

### FIRST FLOOR

Landing

Bedroom 1: 14'4 x 11'2 (4.37m x 3.41m)

Bedroom 2: 9'5 x 8'2 (2.87m x 2.49m)

Shower Room

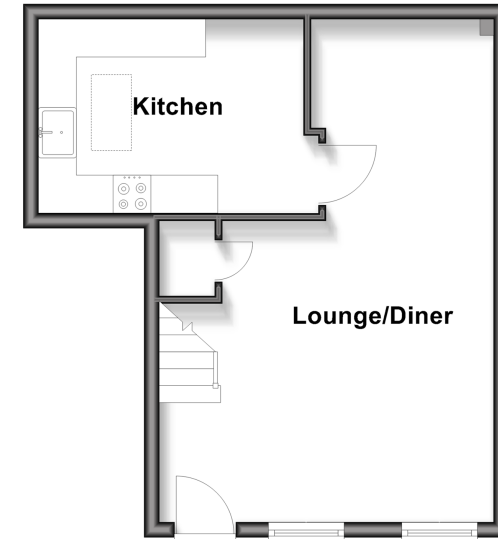
### OUTSIDE

Front Garden

Allocated Parking For 1 Car

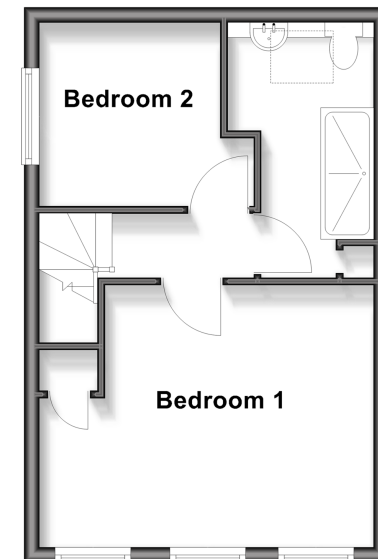
### Ground Floor

Approx. 33.4 sq. metres (359.6 sq. feet)



### First Floor

Approx. 30.6 sq. metres (329.7 sq. feet)



**Call Faversham - 01795 535517 ■ [wardsofkent.co.uk](http://wardsofkent.co.uk)**

- Legal advice should be taken to verify fixtures/fittings, planning, alterations and/or lease details
- Appliances & services are untested, dimensions are approximate and floor plans are not to scale
- Through a Homewise Home For Life Plan people aged 60+ can secure this property for up to 50% less, by purchasing a Lifetime Lease.



10831789/20251201/JB/HR