



**POOLE
TOWNSEND**

Upper Wasdale, Kents Bank Road

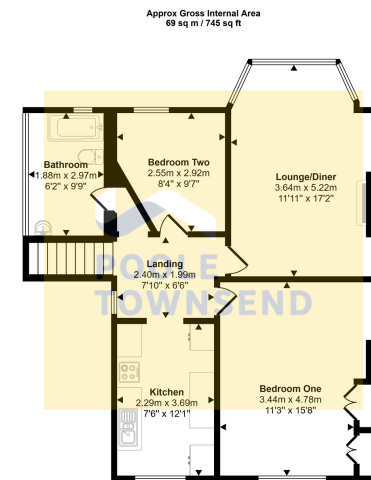
£215,000

🛏️ 2 🚿 1 🚗 1



- Landscaped approach
- Dual access
- Bright reception room
- Modern kitchen
- Spacious master bedroom
- Second double bedroom
- Contemporary bathroom
- Garden with summer house
- Council tax band
- Leasehold

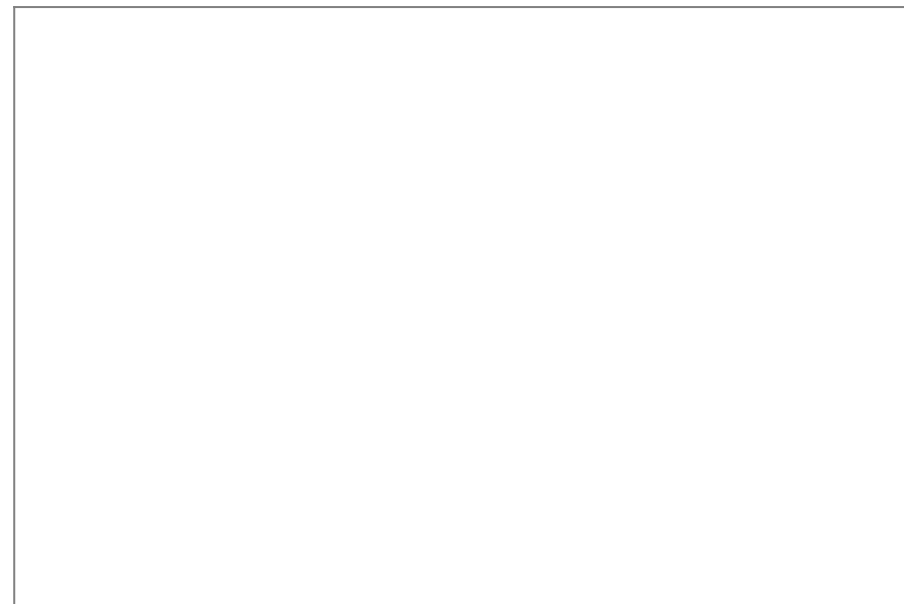




First Floor

This floorplan is only for illustrative purposes and is not to scale. Measurements of rooms, doors, windows, and any items are approximate and no responsibility is taken for any error, omission or mis-statement. Icons of items such as bathroom suites are representations only and may not look like the real items. Made with Made Snappy 360.

This charming two-bedroom apartment enjoys stunning views over Morecambe Bay and is offered for sale with no onward chain. The property provides generous and well-proportioned living accommodation, including a bright and airy lounge/diner, a modern kitchen and bathroom, and two spacious double bedrooms. Externally, low-maintenance gardens and off-road parking for two cars provide both practicality and space for relaxing or entertaining, making this an ideal home for a variety of buyers.



Visit us at
www.pooletownsend.co.uk
enquiries@pooletownsend.co.uk

We are open
 Monday – Friday 9.00 – 5.00
 Saturday 9.00 – 1.00

Barrow 01229 811811
 Ulverston 01229 588111
 Grange 015395 33316
 Kendal 01539 734455
 Milnthorpe 015395 62044