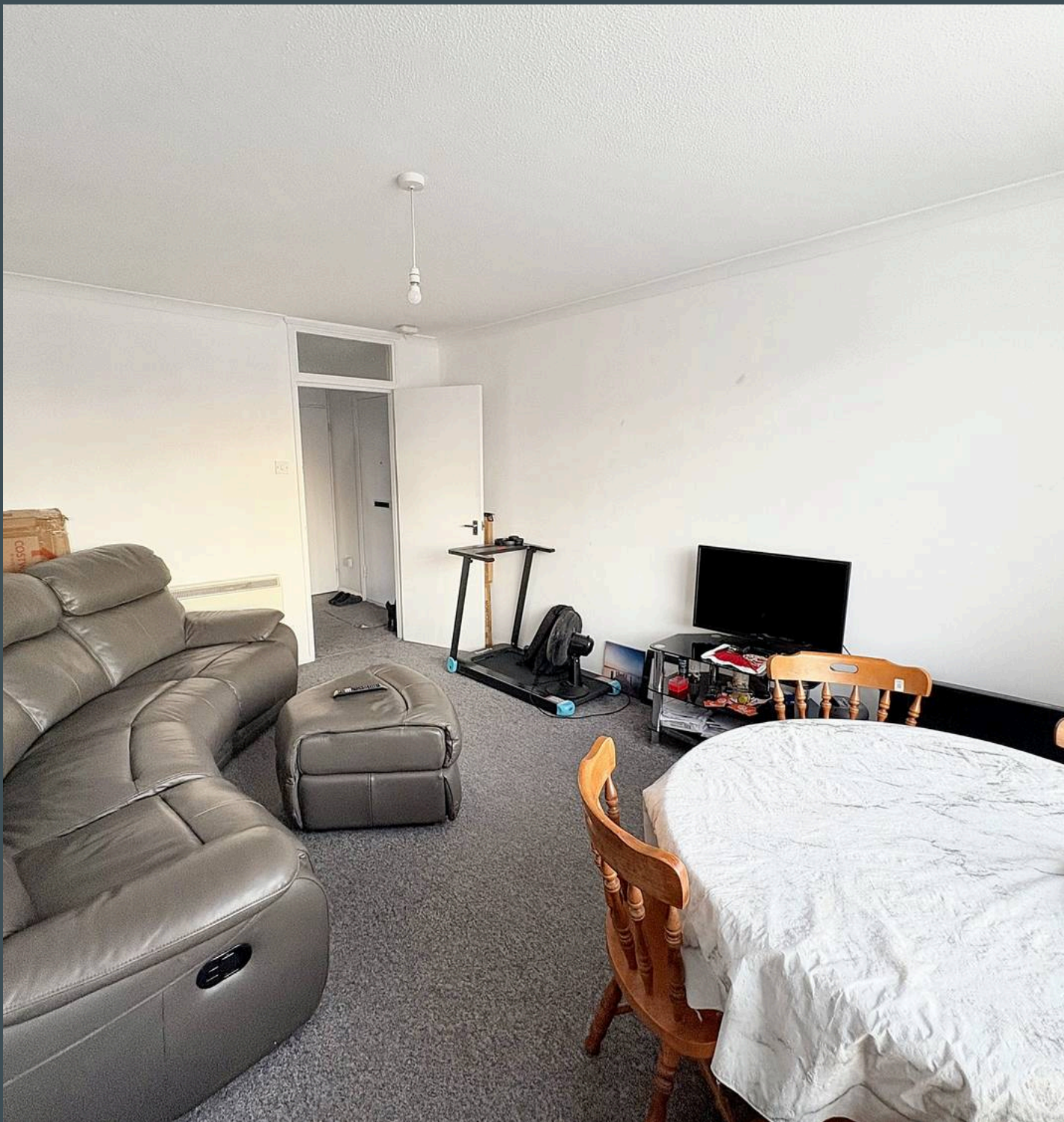




Windsor Court, Sidcup
£1,400 PCM



WILLIAM CHARLES
PROPERTY SERVICES LIMITED



Introducing a charming 1-bedroom flat nestled in the sought-after location near Sidcup Train Station. This first-floor property boasts a spacious layout, ideal for those seeking a cosy yet comfortable living space. The purpose-built design ensures functionality and convenience, making it an attractive prospect for individuals or couples looking to settle in a vibrant neighbourhood with easy access to transportation links.

Upon entering the flat, you will be greeted by a well-proportioned bedroom and a thoughtfully planned living space, perfect for relaxing or entertaining guests. The property's strategic positioning provides residents with the advantage of being conveniently located near essential amenities, further enhancing the appeal of this inviting home.

Don't miss the opportunity to own a property that offers both comfort and convenience in a desirable area. Contact us today to arrange a viewing and discover the endless possibilities that await in this delightful 1-bedroom flat.



Windsor Court, Sidcup

Council Tax band: C

Tenure: Leasehold

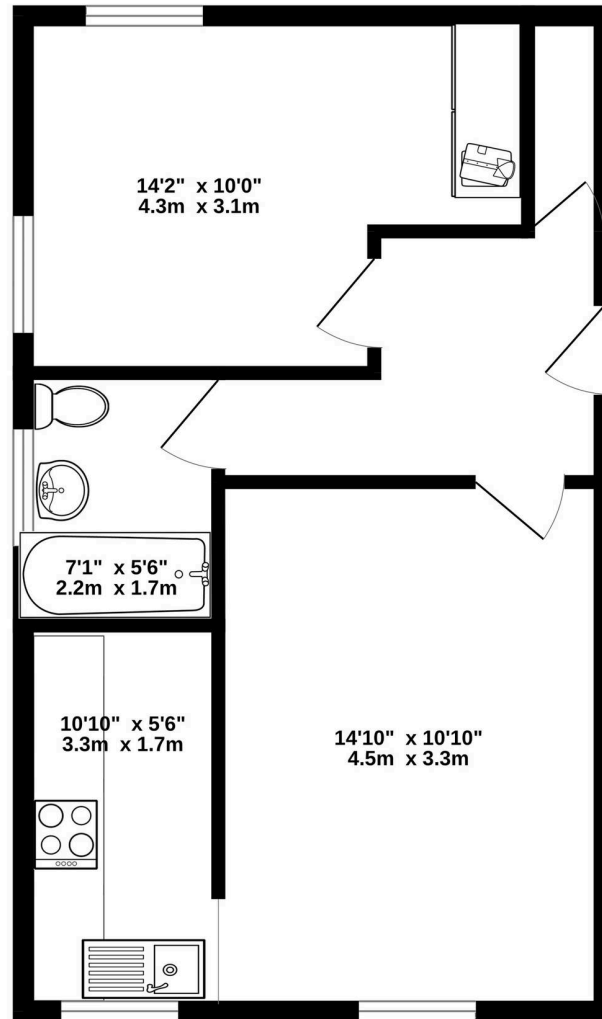
EPC Energy Efficiency Rating: D

EPC Environmental Impact Rating: D

- 1 Bedroom
- Close to Sidcup Train Station
- Sought After Location
- First Floor Flat
- Spacious Throughout
- Purpose Built



GROUND FLOOR



Whilst every attempt has been made to ensure the accuracy of the floorplan contained here, measurements of doors, windows, rooms and any other items are approximate and no responsibility is taken for any error, omission or mis-statement. This plan is for illustrative purposes only and should be used as such by any prospective purchaser. The services, systems and appliances shown have not been tested and no guarantee as to their operability or efficiency can be given.
Made with Metropix ©2025





William Charles Property Services

William Charles Property Services, 1 Bromley Road, Chislehurst - BR7 6LH

02082648264

info@williamcharlesgroup.com

<http://williamcharlesgroup.com>

