



## Province Square, E14

£875,000

Located within Streamlight Tower, this bright and spacious three bedroom, two bathroom apartment benefits from a desirable south facing aspect, allowing natural light throughout the day. The property features a substantial private terrace providing excellent outdoor space and uninterrupted views across the river and docks.

Approximately 0.3 miles from East India DLR station, the property benefits from direct connections to Canary Wharf, Bank and Stratford. Access to the Elizabeth line via Canary Wharf provides fast and convenient journeys across London, including Bond Street, Paddington and Heathrow Airport. Canning Town station is also nearby, offering Jubilee line and DLR services with connections to

### Features

Three Double Bedroom  
Two Bathroom  
Large Private Terrace  
South Facing  
River and Dock Views  
1,170 Square Feet

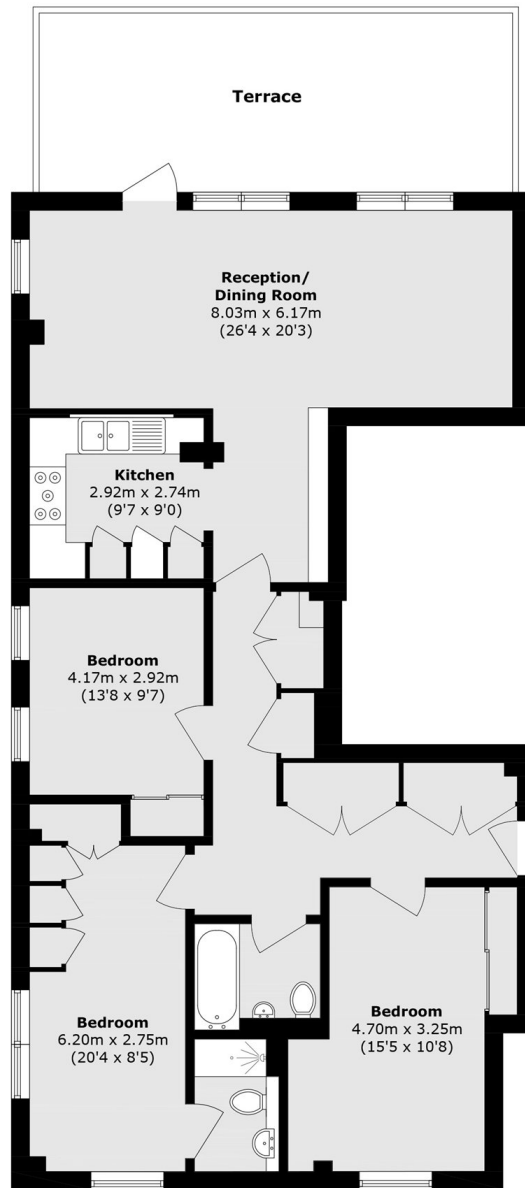


## Province Square, E14

The apartment offers three well proportioned bedrooms, two modern bathrooms and a generous living area designed to maximise natural light and take full advantage of the city views. Two of the bedrooms also benefit from built in air conditioning units.



# Province Square, London, E14



Total area (approx.): 108.7 sq. m (1170 sq. ft)  
Terrace area (approx.): 24.0 sq. m (259.0 sq. ft)